

DRAFT Fiscal Year 2021 Annual Plan

Integrated Ecosystem Restoration & Hurricane Protection in Coastal Louisiana



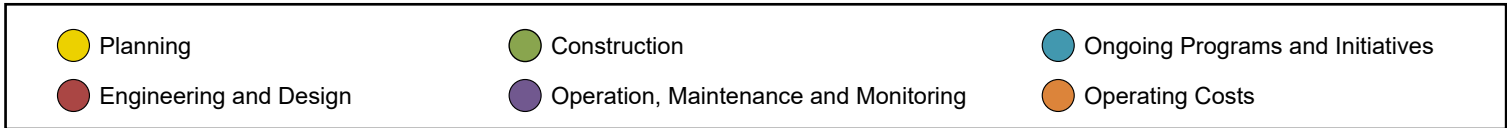
DRAFT Fiscal Year 2021 Annual Plan Summary

CPRA produces the Annual Plan in compliance with Act 523 of the 2009 Regular Session, amended by Act 604.

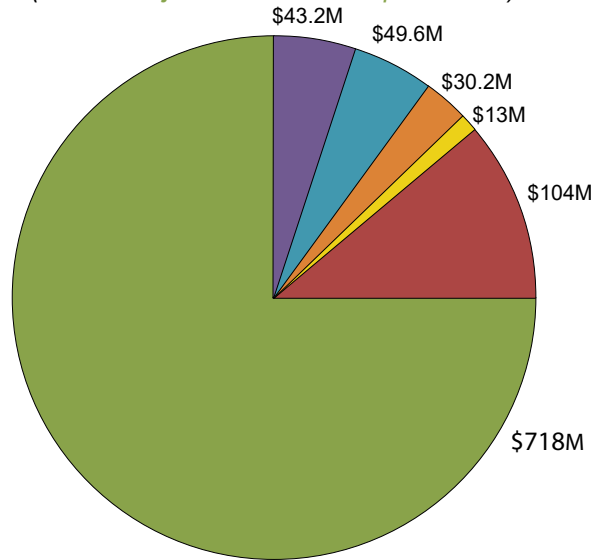
- Spending authorization for the upcoming fiscal year; and
- A 3-Year outlook of projected revenues, expenditures, and project schedules.

CPRA revenues are based on projections; expenditures occur only IF and WHEN projected revenues are received. Primary revenue streams include:

- Annual recurring revenues: State mineral revenues, GOMESA
- Annual payments 2017-2032: DWH Oil Spill dollars (NRDA, NFWF, RESTORE)
- Other grant-based programs (Federal CWPPRA reimbursement)



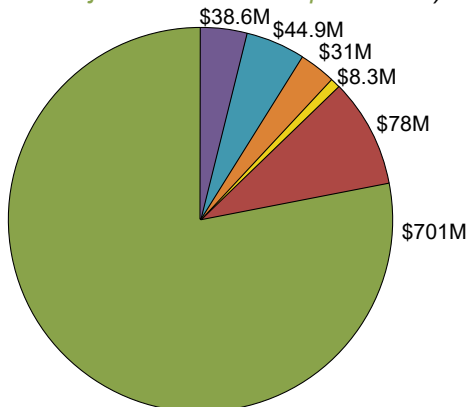
FY2021: TOTAL EXPENDITURES \$958 million
(91.6% Project-Associated Expenditures)



Notes

- Construction includes Beneficial Use (\$2M)
- OM&M includes BIMP (\$2.6M) and Repair/Rehabilitation of Projects (\$1.1M)
- Operating Costs include Assistance to Levee Authorities (\$1M) and Project Support (\$5M)

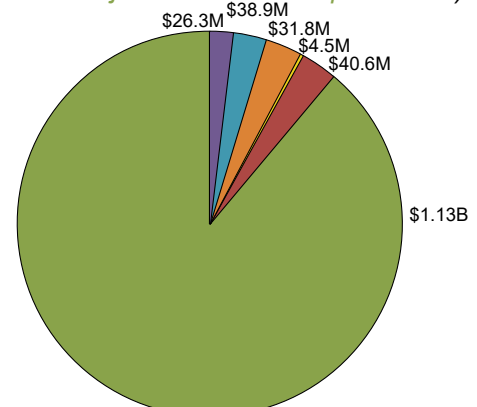
FY2022: TOTAL EXPENDITURES \$901 million
(91.6% Project-Associated Expenditures)



Notes

- Construction includes Beneficial Use (\$2M)
- Engineering and Design and Construction include CWPPRA adjustment for outlying years (see Table 12 for explanation)
- Operating Costs include Assistance to Levee Authorities (\$1M) and Project Support (\$5M)

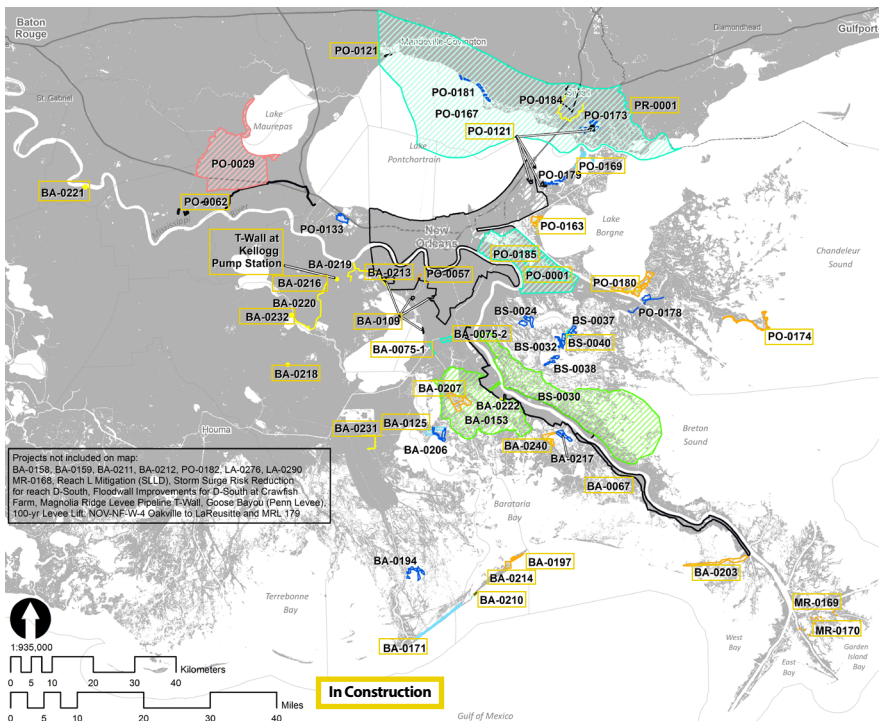
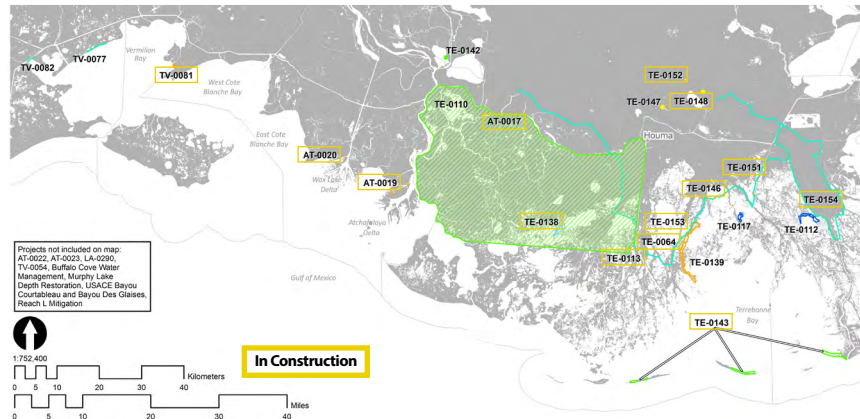
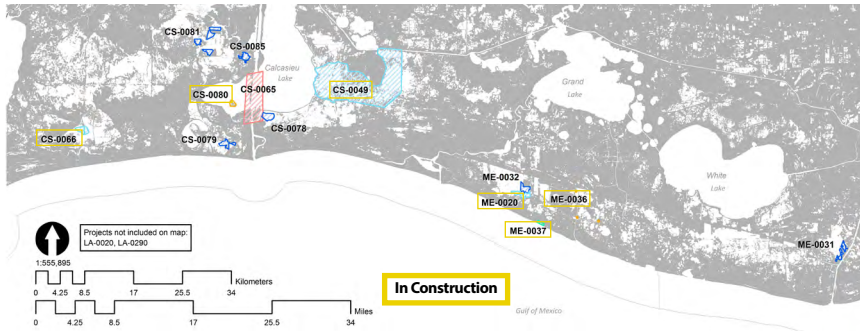
FY2023: TOTAL EXPENDITURES \$1.27 billion
(94.4% Project-Associated Expenditures)



Notes

- Construction includes Beneficial Use (\$2M)
- Engineering and Design and Construction include CWPPRA adjustment for outlying years (see Table 12 for explanation)
- Operating Costs include Assistance to Levee Authorities (\$1M) and Project Support (\$5M)

Active Projects in FY 2021



*RESTORE Parish Matching Projects not included-see Table 31 for reference

106 active projects:
60 in construction, 38 in E&D, 8 in planning

SouthWest Region

14 active projects:
6 in construction, 8 in E&D

- Projects in Construction:**
- CS-0049 Cameron-Creole Freshwater Introduction
 - CS-0066 Cameron Meadows Marsh Creation and Terracing
 - CS-0080 Rabbit Island Restoration
 - ME-0020 South Grand Chenier Marsh Creation
 - ME-0036 Rockefeller Piers and Signage
 - ME-0037 Rockefeller Refuge Shoreline Protection

SouthCentral Region

29 active projects:
19 in construction, 7 in E&D, 3 in planning

- Projects in Construction:**
- AT-0017 Bayou Chene Floodgate
 - AT-0019 Atchafalaya Delta WMA Boat Access
 - AT-0020 Atchafalaya Delta WMA Campground Improvements
 - AT-0022 East Grand Lake Upper Region
 - AT-0023 Henderson Lake Water Management Unit Spoil Bank Gapping
 - TE-0064 Morganza to the Gulf
 - TE-0113 Houma Navigation Canal Lock Complex
 - TE-0138 Bayou DeCade Ridge and Marsh Creation
 - TE-0143 Terrebonne Basin Barrier Island
 - TE-0146 Pointe-aux-Chenes WMA Enhancements
 - TE-0148 40 Arpent Canal Levee- Lockport Co. Canal to Butch Hill Station
 - TE-0151 Grand Bayou Floodgate
 - TE-0152 Storm Surge Risk Reduction for US-90 at Bayou Folse
 - TE-0153 LaCache Pump Station
 - TE-0154 Larose to Golden Meadow Improvements
 - TV-0081 Cypremort Point State Park Improvements
 - Buffalo Cove Water Management
 - Murphy Lake Depth Restoration
 - Reach L Mitigation

SouthEast Region

63 active projects:
35 in construction, 23 in E&D, 5 in planning,

- Projects in Construction:**
- BA-0067 New Orleans to Venice
 - BA-0075-1 Jean Lafitte Tidal Protection
 - BA-0075-2 Rosethorne Tidal Protection
 - BA-0109 HSDRRS Mitigation- WBV
 - BA-0125 Northwest Turtle Bay Marsh Creation
 - BA-0171 Caminada Headlands Back Barrier Marsh Creation
 - BA-0197 West Grand Terre Beach Nourishment and Stabilization
 - BA-0203 Barataria Basin Ridge and Marsh Restoration- Spanish Pass
 - BA-0207 Large-Scale Barataria Marsh Creation
 - BA-0210 Grand Isle & Vicinity Breakwater
 - BA-0213 Bayou Segnette State Park Improvements
 - BA-0214 Grand Isle State Park Improvements
 - BA-0216 Magnolia Ridge Levee Lift and Road
 - BA-0218 Levee Improvements for Geeens Community
 - BA-0221 Pumping Capacity Improvements Phase 1
 - BA-0231 Storm Surge Risk Reduction for Reach E-North
 - BA-0232 Des Allemands FDA Pump Station Rehabilitation
 - BA-0240 Grande Cheniere Ridge and Marsh Creation
 - BS-0040 Bayou Terre aux Boeufs Ridge Restoration & Armoring Phase 1
 - MR-0169 Pass a Loutre Crevasses NRDA
 - MR-0170 Pass a Loutre Campgrounds NRDA
 - PO-0001 Violet Canal Repairs
 - PO-0057 SELA- Overall
 - PO-0062 West Shore-Lake Pontchartrain Hurricane Protection
 - PO-0121 HSDRRS Mitigation- LPV
 - PO-0163 Golden Triangle Marsh Creation
 - PO-0169 New Orleans Landbridge Shoreline Stabilization & Marsh Creation
 - PO-0174 Biloxi Marsh Living Shoreline Project
 - PO-0180 Lake Borgne Marsh Creation- Increment 1
 - PO-0185 St. Bernard Pump Station Repairs
 - PR-0001 Middle Pearl River WMA Boat Launch
 - Magnolia Ridge Levee Pipeline T-Wall
 - Storm Surge Risk Reduction for Reach D-South Elevation to +18 ft
 - Storm Surge Risk Reduction for Reach D-South at Crawfish Farm
 - T-Wall at Kellogg Pump Station



With the passage of Act 8 of the First Extraordinary Session of 2005 (Act 8), the Louisiana Legislature mandated the integration of hurricane protection activities (e.g., levee construction) and coastal restoration activities (e.g., river diversions or marsh creation). Act 8 also created the Coastal Protection and Restoration Authority Board (CPRA Board) and tasked it with oversight of these activities. The Office of Coastal Protection and Restoration (OCPR) was designated as the implementation arm of the CPRA Board. To avoid confusion, the 2012 Louisiana Legislature changed the name of the state agency from OCPR to the Coastal Protection and Restoration Authority (CPRA).

The CPRA Board, with the assistance of CPRA, is required by Act 523 of the 2009 Regular Legislative Session, amended by Act 604, to produce an Annual Plan that inventories projects, presents implementation schedules for these projects, and identifies funding schedules and budgets. This Fiscal Year 2020 Annual Plan provides an update on the state's efforts to protect and restore its coast and describes the short-term and long-term results that citizens can expect to see as the state progresses toward a sustainable coast.

Act 570 of the 2018 Regular Session, enacting La. R.S. 49:214.8.1, et seq., transferred the responsibilities of the Atchafalaya Basin Research and Promotion Board and the Atchafalaya Basin Program from the Department of Natural Resources to the Coastal Protection and Restoration Authority. The Atchafalaya Basin Program (R.S. 49:214.8.1 et seq.) is placed within the Coastal Protection and Restoration Authority, which shall perform and exercise the powers, duties, functions, and responsibilities of the Program as provided by law. The annual basin plan shall be included in the Annual Plan: Integrated Ecosystem Restoration and Hurricane Protection in Coastal Louisiana produced each year by the Coastal Protection and Restoration Authority.

Annual Plan

Projects Completed Since 2007

Project ID	Project Name	Project Type ¹	Parish	Program	Total Project Estimate
FY 2020 (Projects in italics are projected to complete construction)					
BA-0085	St. Charles West Bank Hurricane Protection Levee	HP	St. Charles	State	\$14,500,000
<i>BA-0154</i>	<i>Previously Authorized Mitigation WBV</i>	<i>OT</i>	<i>Jefferson, St. Charles</i>	<i>GNO-HSDRRS</i>	<i>\$11,000,000</i>
<i>BA-0202</i>	<i>Queen Bess Island Restoration</i>	<i>BH</i>	<i>Jefferson</i>	<i>NRDA</i>	<i>\$18,710,000</i>
<i>BA-0233</i>	<i>Grand Isle Bayside Breakwater</i>	<i>SP</i>	<i>Jefferson</i>	<i>State</i>	<i>\$6,500,000</i>
CS-0054	Cameron-Creole Watershed Grand Bayou Marsh Creation	SP	Cameron	CWPPRA	28,707,688
<i>ME-0018</i>	<i>Rockefeller Refuge Gulf Shoreline Stabilization</i>	<i>HP</i>	<i>Terrebonne</i>	<i>GOMESA</i>	<i>\$35,426,478</i>
PO-0170	Violet Canal North Levee Alignment	HP	St. Bernard	State	\$4,000,000
TE-0078	Cut-Off/Pointe Aux Chene Levee	HP	Lafourche	CDBG	\$10,249,101
<i>TE-0144</i>	<i>Island Road Fishing Piers</i>	<i>RU</i>	<i>Terrebonne</i>	<i>NRDA</i>	<i>\$3,000,000</i>
<i>TE-0155</i>	<i>Falgout Canal Structure</i>	<i>HP</i>	<i>Terrebonne</i>	<i>GOMESA</i>	<i>\$7,300,000</i>
TV-0063	Cole's Bayou Marsh Restoration	MC	Vermilion	CWPPRA	\$24,930,426
FY 2019					
CS-0059	Oyster Bayou Marsh Creation and Terracing	MC	Cameron	CWPPRA	\$30,866,713
TE-0072	Lost Lake Marsh Creation and Hydrologic Restoration	MC	Terrebonne	CWPPRA	\$37,119,324
TE-0100	NRDA Caillou Lake Headlands	BH	Terrebonne	NRDA	\$118,340,766
TE-0116	St. Mary Backwater Flooding	HP	St. Mary	State	\$10,394,609
FY 2018					
BA-0034-2	Hydrologic Restoration and Vegetative Planting in the Des Allemands Swamp	HR	Lafourche, St. James	CWPPRA	\$6,470,448
BA-0111	Shell Island West- NRDA	BH	Plaquemines	NRDA	\$78,486,655
BA-0169	Kraemer Bayou Boeuf Levee Lift	HP	Lafourche	State	\$1,200,000
BA-0191	Spanish Pass Ridge and Marsh Restoration	RR	Plaquemines	WRDA	\$18,111,516
BS-0016	South Lake Lery Shoreline and Marsh Restoration	MC	Plaquemines	CWPPRA	\$33,716,987
ME-0021	Grand Lake Shoreline Protection	SP	Cameron	CWPPRA	\$11,305,616
PO-0060	Permanent Canal Closures and Pump Stations	HP	Jefferson, Orleans	HSDRRS	\$614,800,000
PO-0104	Bayou Bonfouca Marsh Creation	MC	St. Tammany	CWPPRA	\$29,273,984
TE-0063	Falgout Canal Road Levee	HP	Terrebonne	CDBG	\$24,803,191
TE-0065-SP	Larose to Golden Meadow - Larose Sheetpile	HP	Lafourche	State	\$5,205,702
TV-0055	Morgan City/ St. Mary Flood Protection	HP	St. Mary	State	\$10,900,000
FY 2017					
BA-0027-C	Barataria Basin Landbridge Shoreline Portection, Phase 3	SP	Jefferson, Lafourche	CWPPRA	\$26,351,988
BA-0043-EB	Mississippi River Long Distance Sediment Pipeline	MC	Jefferson, Plaquemines	CIAP	\$66,310,461
BA-0048	Bayou Dupont Marsh and Ridge Creation	MC	Jefferson	CWPPRA	\$38,324,646
BA-0143	Caminada Headland Beach and Dune Restoration INCR2	BH	Jefferson, Lafourche	NFWF	\$147,063,587
BA-0161	Mississippi River Water Reintroduction into Bayou Lafourche - BLFWD	FD	Ascension, Assumption	CIAP	\$26,691,418
BA-0164	Bayou Dupont Sediment Delivery - Marsh Creation #3 and Terracing	MC	Jefferson, Plaquemines	CWPPRA	\$18,733,494
MR-0016-SSPM	Mississippi River Delta Strategic Planning - SSPM Expansion	OT	Coastwide	CIAP	\$13,520,000
PO-0063	Lake Pontchartrain & Vicinity	HP	Plaquemines, St. Bernard, St. Charles	HSDRRS	\$3,852,000,000
PO-0142	Hydrologic Restoration of the Amite River Diversion Canal	HR	Livingston	State	\$3,592,100
PO-0146	LPV Mitigation Project, Manchac WMA Marsh Creation	SP	St. John the Baptist	HSDRRS	\$40,989,172
PO-0148	Living Shoreline	OR	Jefferson, St. Bernard	State	\$14,300,000

Notes

1. See page 62 for list of acronyms.



Project ID	Project Name	Project Type ¹	Parish	Program	Total Project Estimate
FY 2017					
BA-0027-C	Barataria Basin Landbridge Shoreline Protection, Phase 3	SP	Jefferson,	CWPPRA	\$26,351,988
BA-0043-EB	Mississippi River Long Distance Sediment Pipeline	MC	Jefferson,	CIAP	\$66,310,461
BA-0048	Bayou Dupont Marsh and Ridge Creation	MC	Jefferson	CWPPRA	\$38,324,646
BA-0143	Caminada Headland Beach and Dune Restoration INCR2	BH	Jefferson,	NFWF	\$147,063,587
BA-0161	Mississippi River Water Reintroduction into Bayou Lafourche	FD	Ascension,	CIAP	\$26,691,418
BA-0164	Bayou Dupont Sediment Delivery - Marsh Creation #3 and	MC	Jefferson,	CWPPRA	\$18,733,494
MR-0016-SSPM	Mississippi River Delta Strategic Planning - SSPM Expansion	OT	Coastwide	CIAP	\$13,520,000
PO-0063	Lake Pontchartrain & Vicinity	HP	Plaquemines,	HSDRRS	\$3,852,000,000
PO-0142	Hydrologic Restoration of the Amite River Diversion Canal	HR	Livingston	State	\$3,592,100
PO-0146	LPV Mitigation Project, Manchac WMA Marsh Creation	SP	St. John the	HSDRRS	\$40,989,172
PO-0148	Living Shoreline	OR	Jefferson,	State	\$14,300,000
FY 2016					
BA-0042	Lake Hermitage Marsh Creation	MC	Plaquemines	CWPPRA	\$44,050,491
BA-0068	Grand Liard Marsh and Ridge Restoration	MC	Plaquemines	CWPPRA	\$42,804,677
BA-0168	Grand Isle-Fifi Island Breakwaters	SP	Jefferson	State	\$6,000,000
LA-0016	Non-Rock Alternatives to Shoreline Protection Demonstration	SP	Iberia	CWPPRA	\$7,358,699
PO-0043	East LaBranche Shoreline Protection	SP	St. Charles	CIAP	\$3,753,816
PO-0073	Central Wetlands Demonstration	HR	Orleans	CIAP	\$3,561,832
PO-0073-3	Central Wetlands Demonstration Expansion	MC	Orleans	CIAP	\$4,500,000
TV-0031	Acadiana Regional Airport Street Improvements - Admiral Doyle Drive	IN	Iberia	CIAP	\$1,114,972
TV-0052-2	Franklin Floodgate Sinkable Barge and Pump Station (Phase 2)	HP	St. Mary	CDBG	\$2,481,000
TV-0076	Surplus Freshwater Bayou Bank Stabilization	SP	Vermilion	State	\$1,300,000
FY 2015					
AT-0005	Morgan City Industrial Road	IN	St. Mary	CIAP	\$1,247,000
BA-0045	Caminada Headland Beach and Dune Restoration	BH	Lafourche	CIAP	\$70,679,580
BA-0074	Storm-Proofing of Interior Pumping Stations	HP	Jefferson, Orleans	HSDRRS	\$340,000,000
BA-0084	Bayou Lafourche Fresh Water District - Walter S. Lemann Memorial Pump Station Renovations	OT	Ascension	CDBG	\$3,194,355
BA-0141	NRDA Lake Hermitage Marsh Creation INCR2	MC	Plaquemines	NRDA	\$7,321,162
CS-0028-4-5	Sabine Refuge Marsh Creation, Cycles 4 and 5	MC	Cameron	CWPPRA	\$11,838,649
CS-0033	Cameron Parish Shoreline Restoration	BH	Cameron	State	\$45,747,094
ME-0025-SF	Marsh Creation Near Freshwater Bayou	MC	Vermilion	State	\$5,700,000
PO-0072	Biloxi Marsh	SP	St. Bernard	State	\$22,000,000
PO-0073-1	Central Wetlands - Riverbend	HR	St. Bernard	CIAP	\$2,000,000
PO-0087	Madisonville Bulkhead Project	HP	St. Tammany	CDBG	\$2,144,266
PO-0145	LPV Task Force Guardian Mitigation-Bayou Sauvage	HR	Orleans	HSDRRS	\$1,960,497
TE-0065	Larose to Golden Meadow - Flood Protection	HP	Lafourche	State	\$19,820,000
TV-0011-B-EB	Freshwater Bayou Bank Stabilization (CIAP)	SP	Vermilion	CIAP	\$13,568,804

Notes

1. See page 62 for list of acronyms.

Annual Plan

Projects Completed Since 2007

Project ID	Project Name	Project Type ¹	Parish	Program	Total Project Estimate
FY 2014					
BA-0040	Riverine Sand Mining/Scofield Island Restoration	BH	Plaquemines	BERM	\$60,150,000
BA-0058	Fringe Marsh Repair	MC	Plaquemines	CIAP	\$8,756,606
BA-0110	Shell Island East-BERM	BH	Plaquemines	BERM	\$47,679,580
BA-0162-SPER	Shoreline Protection Emergency Restoration	SP	Plaquemines	CIAP	\$355,780
LA-0009	Sediment Containment System for Marsh Creation	OT	St. Charles	CWPPRA	\$2,323,073
PO-0055	Lake Pontchartrain & Vicinity, IHNC Surge Barrier, LPV-IHNC-02	HP	Orleans,	HSDRRS	\$1,134,000,000
TE-0043	GIWW Bank Restoration of Critical Areas in Terrebonne	SP	Terrebonne	CWPPRA	\$13,022,245
TE-0111	Valentine to Larose	HP	Lafourche	State	\$1,000,000
TV-0052-1	Franklin Floodgate Sinkable Barge and Pump Station (Phase 1)	HP	St. Mary	CDBG	\$6,345,093
FY 2013					
BA-0038	Pelican Island and Pass La Mer to Chalant Pass Restoration	BH	Plaquemines	CWPPRA	\$52,894,031
PO-0036-EB	Orleans Land Bridge SP & Marsh Creation	SP	Orleans	CIAP	\$30,420,000
PO-0064	Lake Pontchartrain & Vicinity, Seabrook LPV-IHNC-01	HP	Orleans	HSDRRS	\$157,156,414
TE-0048	Raccoon Island Shoreline Protection/Marsh Creation Project	SP	Terrebonne	CWPPRA	\$21,364,793
TE-0052	West Belle Pass Barrier Headland Restoration	BH	Lafourche	CWPPRA	\$34,219,212
TV-0028	Port of Iberia Bridge Replacement - Port Road over Commercial Canal	IN	Iberia	CIAP	\$625,792
TV-0030	Port of Iberia Bridge Replacement - David Dubois Road over Commercial Canal	IN	Iberia	CIAP	\$1,058,013
FY 2012					
BA-0020	Jonathan Davis Wetland Protection	SP	Jefferson	CWPPRA	\$30,136,616
BA-0025-SF	Bayou Lafourche Freshwater Introduction	FD	Lafourche	Surplus	\$20,000,000
BA-0041	South Shore of the Pen Shoreline Protection and Marsh Creation	SP	Jefferson	CWPPRA	\$17,475,047
LA-0008	Bioengineered Oyster Reef	OR	Cameron	CWPPRA	\$1,510,433
LA-0012-1	CIAP Performance Evaluation – Rockefeller Refuge Performance Monitoring	OT	Cameron, Vermilion	CIAP	\$404,637
TE-0034	Penchant Basin Natural Resources Plan, Increment 1	HR	Terrebonne	CWPPRA	\$18,878,814
TE-0039	South Lake Decade Freshwater Introduction	HR	Terrebonne	CWPPRA	\$6,473,826
TE-0053	Enhancement of Barrier Island Vegetation Demonstration	OT	Terrebonne	CWPPRA	\$2,169,264
FY 2011					
BA-0030	East Grand Terre	BH	Plaquemines	CIAP/Surplus	\$25,426,247
BA-0055	LA-1 Improvements- Fourchon to Leeville Bridge (CIAP)	IN	Lafourche	CIAP	\$33,000,000
CS-0004-A	Cameron-Creole Levee Maintenance	HR	Cameron	CWPPRA	\$13,850,000
CS-0028-2	Sabine Refuge Marsh Creation, Cycle 2	MC	Cameron	CWPPRA	\$17,750,000
CS-0034	Black Lake Supplemental Beneficial Use Disposal Area	MC	Cameron	State	\$21,034,329
LA-0163	Emergency Barrier Berms	OT	St. Bernard,	Emergency	\$251,000,000
PO-0061	St. Bernard Parish 40 Arpent Levee Repairs	HP	St. Bernard	State	\$5,000,000
TE-0043-EB	GIWW Bank Restoration of Critical Areas in Terrebonne	SP	Terrebonne	CIAP	\$7,274,676
TE-0082	Lost Lake Vegetation Project	OT	Terrebonne	Federal Grant	\$161,000
TV-0021	East Marsh Island Marsh Creation	MC	Iberia	CWPPRA	\$21,215,936

Notes

1. See page 62 for list of acronyms.



Project ID	Project Name	Project Type ¹	Parish	Program	Total Project Estimate
FY 2010					
BA-0036	Dedicated Dredging on the Barataria Land Bridge	MC	Jefferson	State Only/ CWPPRA/ CIAP	\$36,281,893
BA-0039	Mississippi River Sediment Delivery System - Bayou Dupont	MC	Jefferson, Plaquemines	CWPPRA/ ARRA	\$26,797,363
BA-0055	LA 1 Improvements - Fourchon to Leeville Bridge (CIAP)	IN	Jefferson	State	\$18,000,000
BA-0152	East Harvey Canal Interim Hurricane Protection - Phase 1	HP	Jefferson	State	\$4,000,000
CS-0029	Black Bayou Culverts Hydrologic Restoration	HR	Cameron	CWPPRA	\$6,641,125
CS-0032	East Sabine Lake Hydrologic Restoration	HR	Cameron	CWPPRA	\$6,864,413
CS-0047	Trosclair Road	IN	Cameron	CIAP (Parish)	\$400,000
LA-0021	Beneficial Use 2008 - Sabine Cycle	MC	Cameron	State	\$6,636,312
ME-0018-EB	Rockefeller Refuge Gulf Shoreline Stabilization Demonstration Project	SP	Cameron	CIAP	\$6,054,083
ME-0021-EB	Grand Lake Shoreline Protection	SP	Cameron	CIAP	\$9,912,919
PO-0038-SF	MRGO Closure Structure	HR	St. Bernard	3rd Supplemental State	\$14,116,500
TE-0044	North Lake Mechant Landbridge Restoration	SP	Terrebonne	CWPPRA	\$40,254,428
TE-0050	Whiskey Island Back Barrier Marsh Creation	BH	Terrebonne	CWPPRA	\$26,831,855
FY 2009					
BA-0015-X2	Lake Salvador Shoreline Protection (Phase III)	SP	St. Charles	CIAP	\$3,452,189
BA-0027	Barataria Basin Landbridge Shoreline Protection, Phase 1 & 2	SP	Jefferson	CWPPRA	\$32,538,623
BA-0035	Pass Chaland to Grand Bayou Pass Barrier Shoreline Restoration	BH	Plaquemines	CWPPRA	\$37,023,827
PO-0030	Lake Borgne Shoreline Protection	SP	St. Bernard	CWPPRA	\$26,793,123
PO-0033	Goose Point/Point Platte Marsh Creation	MC	St. Tammany	CWPPRA	\$22,117,777
TE-0046	West Lake Boudreaux Shoreline Protection & Marsh Creation	SP	Terrebonne	CWPPRA	\$19,143,813
FY 2008					
LA-0001-E	Dedicated Dredging-Grand Bayou Blue	MC	Lafourche	LA Dedicated Dredging	\$1,831,534
LA-0001-F	Dedicated Dredging- Point au Fer	MC	Terrebonne	LA Dedicated Dredging	\$2,469,250
TE-0037	New Cut Dune & Marsh Restoration	BH	Terrebonne	CWPPRA	\$12,869,325
TE-0045	Terrebonne Bay Shoreline Protection Demo	SP	Terrebonne	CWPPRA	\$3,968,768
Notes					
1. See page 62 for list of acronyms.					

Annual Plan

Projects Scheduled to be in Construction in FY 2021

Map 1: Projects Scheduled to be in Construction in FY 2021

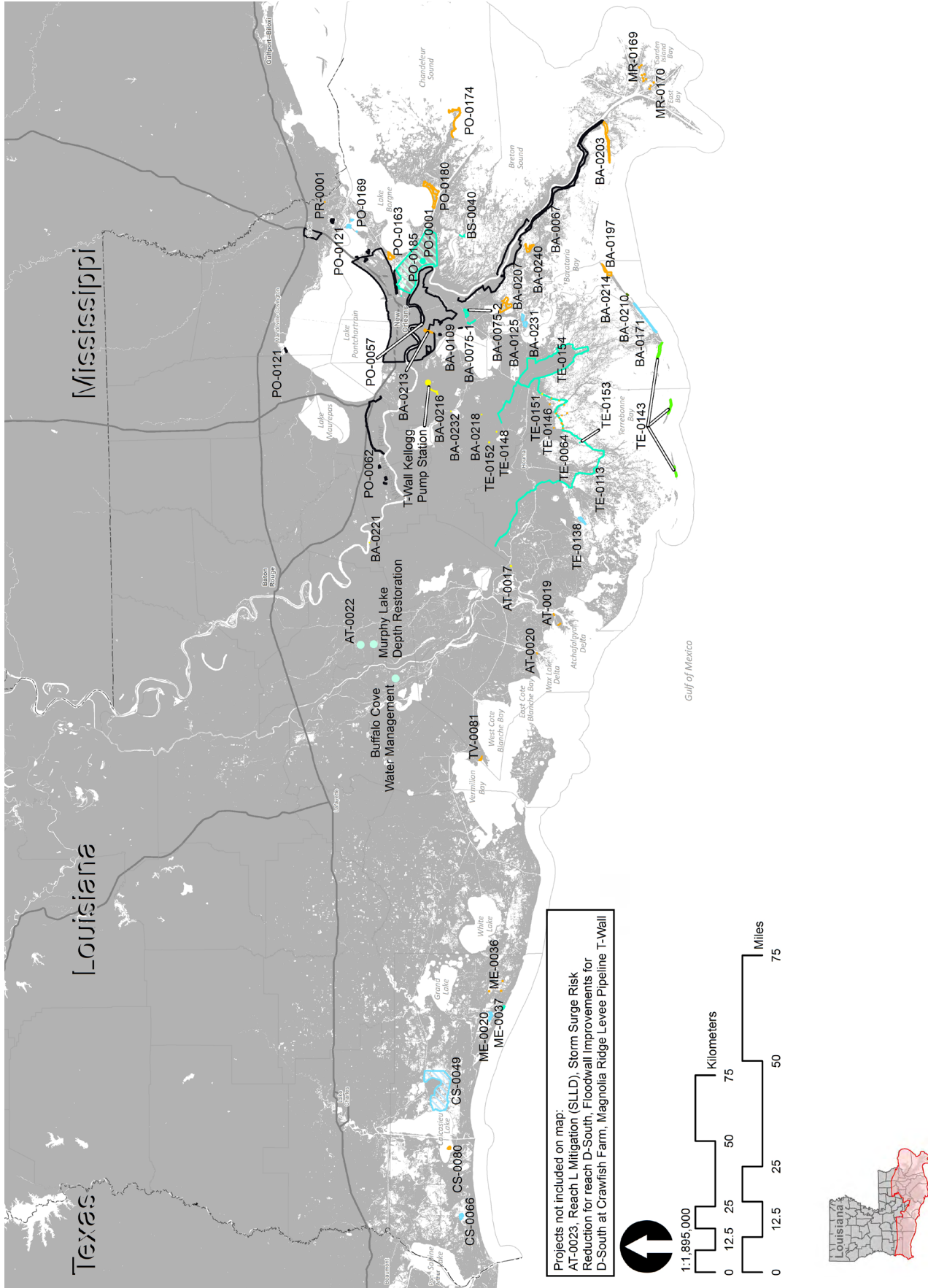




Table 1: Projects Scheduled to be in Construction in FY 2021

Project ID	Project Name	Construction Start Date ¹	Construction Finish Date	Total Project Estimate
CWPPRA Phase II Projects				
BA-0125	Northwest Turtle Bay Marsh Creation	14-Dec-18	28-Oct-20	\$33,664,670
BA-0171	Caminada Headlands Back Barrier Marsh Creation	12-Nov-19	15-Sep-21	\$32,284,094
CS-0049	Cameron-Creole Freshwater Introduction	04-Jun-19	19-May-21	\$26,776,735
CS-0066	Cameron Meadows Marsh Creation and Terracing	15-Jan-20	7-Apr-22	\$32,081,560
ME-0020	South Grand Chenier Marsh Creation Project	22-Nov-19	30-Sep-21	\$23,873,346
PO-0169	New Orleans Landbridge Shoreline Stabilization & Marsh Creation	31-Mar-20	17-Jun-21	\$25,446,125
TE-0138	Bayou DeCade Ridge and Marsh Creation	03-Mar-20	30-Jun-21	\$34,400,000
WRDA Projects				
BA-0210	Grand Isle & Vicinity Breakwater	06-May-19	6-May-21	\$15,000,000
State-Only Projects				
AT-0022	East Grand Lake Upper Region	In Development	In Development	\$3,589,120
AT-0023	Henderson Lake Water Management Unit Spoil Bank Gapping	In Development	In Development	\$500,000
BA-0075-1	Jean Lafitte Tidal Protection	19-Feb-14	16-Nov-20	\$33,582,639
BA-0075-2	Rosethorn Tidal Protection	31-Jan-20	3-Feb-22	\$24,930,787
BS-0040	Bayou Terre Aux Boeufs Ridge	02-Dec-19	30-Jul-20	\$26,000,000
ME-0037	Rockefeller Shoreline Protection	31-Jan-20	30-Dec-20	\$9,270,263
PO-0001	Violet Canal Repairs	03-Feb-20	5-Feb-21	\$1,000,000
PO-0185	St. Bernard Pump Station Repairs	06-Jul-20	23-May-21	\$4,000,000
TE-0064	Morganza to the Gulf	30-Nov-05	30-Jun-21	\$391,600,000
TE-0153	LaCache Pump Station	18-Nov-19	20-Nov-20	\$2,000,000
TE-0154	Larose to Golden Meadow System Improvements	08-May-19	23-Jun-21	\$5,600,000
N/A	Murphy Lake Depth Restoration	In Development	In Development	\$300,000
N/A	Buffalo Cove Water Management	In Development	In Development	\$300,000
HSDRRS and Other Federal Hurricane Protection Projects				
BA-0067	New Orleans to Venice	23-Nov-11	26-Dec-23	\$1,301,523,760
BA-0109	HSDRRS Mitigation- WBV ⁴	27-Feb-15	8-May-21	\$126,000,000
PO-0057	SELA- Overall	18-Feb-09	5-Apr-22	\$1,170,974,586
PO-0062	West Shore-Lake Pontchartrain	14-Sep-20	19-May-23	\$760,000,000
PO-0121	HSDRRS Mitigation- LBV ⁵	23-Jul-15	24-Feb-20	\$85,000,000
Deepwater Horizon NRDA Projects				
AT-0019	Atchafayala Delta WMA Boat Access Project	11-Dec-19	15-Nov-20	\$920,450
AT-0020	Atchafayala Delta WMA Campground Improvements	11-Dec-19	15-Mar-21	\$3,248,000
BA-0197	West Grand Terre Beach Nourishment	20-May-20	29-Jan-22	\$65,000,000
BA-0203	Barataria Basin Ridge and Marsh Creation - Spanish Pass Increment	10-Feb-20	17-Jun-22	\$124,500,000
BA-0207	Large-Scale Barataria Marsh Creation	01-Oct-20	2-Sep-22	\$178,251,000
BA-0213	Bayou Segnette State Park Improvements	17-Jan-20	29-Mar-21	\$2,126,724
BA-0214	Grand Isle State Park Improvements	12-Nov-19	31-Aug-21	\$6,126,967
BA-0240	Grande Cheniere Ridge Marsh Creation	21-Oct-20	30-Jun-22	\$65,000,000
CS-0080	Rabbit Island Restoration Project	30-Jun-20	20-Jul-21	\$27,000,000
ME-0036	Rockefeller Piers and Signage	12-Sep-19	1-Sep-20	\$690,000
MR-0169	Pass a Loutre Crevasses NRDA	17-Sep-19	16-Nov-20	\$1,568,000
MR-0170	Pass a Loutre Campgrounds NRDA	17-Sep-19	17-Nov-20	\$1,624,000
PO-0163	Golden Triangle Marsh Creation	01-Oct-20	30-Dec-22	\$54,550,330
PO-0174	Biloxi Marsh Living Shoreline Project	15-Jan-21	15-Jul-22	\$57,719,731
PO-0180	Lake Borgne Marsh Creation - Increment One	01-Sep-20	31-Mar-23	\$127,000,000
PR-0001	Middle River Pearl River Wildlife Management Area Boat Launch	12-Feb-20	8-Jan-21	\$575,000
TE-0146	Pointe-aux-Chenes WMA Enhancements	29-Jan-20	28-Oct-20	\$5,000,000
TV-0081	Cypremort Point State Park Improvements	17-Mar-20	21-Jun-21	\$4,477,338
NFWF Projects				
TE-0143	Terrebonne Basin Barrier Island	18-Jun-19	17-Sep-21	\$159,974,156
RESTORE Projects				
TE-0113	Houma Navigation Canal Lock Complex	18-Mar-20	6-Mar-23	\$357,784,732
GOMESA Projects				
AT-0017	Bayou Chene Floodgate	16-Dec-19	29-Dec-22	\$80,000,000
BA-0216	Magnolia Ridge Levee Lift and Road	01-Mar-19	15-Jul-20	\$3,500,000
BA-0218	Levee Improvements for Gheens Community	15-Jul-19	14-Aug-20	\$2,127,992
BA-0221	Pumping Capacity Improvements Phase I	15-Jan-20	22-Aug-22	\$65,000,000
BA-0231	Storm Surge Risk Reduction for Reach E-North- Elevation to +14.5 ft	30-Dec-19	15-Mar-21	\$1,500,000
BA-0232	Des Allemands FDA Pump Station Rehabilitation	10-Dec-19	15-Nov-20	\$762,595
TE-0148	40 Arpent Canal Levee - Lockport Company Canal to Butch Hill Station	07-Sep-19	12-Jan-21	\$10,386,418
TE-0151	Grand Bayou Floodgate	29-Nov-19	6-Aug-21	\$18,500,000
TE-0152	Storm Surge Risk Reduction for US-90 at Bayou Folse	06-Jan-20	23-Dec-20	\$1,804,148
Not Avail.	T-Wall Kellogg Pump Station	In Development	In Development	Not Avail.
Not Avail.	Reach L Mitigation	In Development	In Development	Not Avail.
Not Avail.	Storm Surge Risk Reduction for Reach D-South- Elevation to +18 ft	In Development	In Development	Not Avail.
Not Avail.	Floodwall Improvements for Reach D-South at Crawfish Pond	In Development	In Development	Not Avail.
Not Avail.	Magnolia Ridge Levee Pipeline and T-Wall	In Development	In Development	Not Avail.

Notes

1. Construction start date is defined as projected date for advertisement of construction bid notice; actual date of mobilization may vary.
2. Project cost included in total cost for WBV (BA-0066).
3. Project cost included in total cost for LPV (PO-0063).

Annual Plan

Projected Three-Year Schedules for Active Projects

Table 2: Projected Three-Year Schedules for Active CWPPRA Projects (FY 2021 - 2023)

Project ID	Project Name	Federal Sponsor	CY 2020		Calendar Yr 2021				Calendar Yr 2022				CY 2023	
			1FQ 2021	2FQ 2021	3FQ 2021	4FQ 2021	1FQ 2022	2FQ 2022	3FQ 2022	4FQ 2022	1FQ 2023	2FQ 2023	3FQ 2023	4FQ 2023
CWPPRA Phase I Projects														
BA-0194	East Leeville Marsh Creation and Nourishment	NOAA	D	D	W	W	W	W	W	W	W	W	W	W
BS-0024	Terracing and Marsh Creation South of Big Mar	USFWS	D	D	W	W	W	W	W	W	W	W	W	W
BS-0032	Mid Breton Land Bridge Marsh Creation & Terracing	USFWS	D	D	W	W	W	W	W	W	W	W	W	W
CS-0079	Oyster Lake Marsh Creation and Nourishment	NOAA	D	D	W	W	W	W	W	W	W	W	W	W
PO-0133	Labranche Central Marsh Creation	NRCS	D	D	W	W	W	W	W	W	W	W	W	W
PO-0178	Bayou La Loutre Ridge Restoration and Marsh Creation	NRCS	D	D	W	W	W	W	W	W	W	W	W	W
PO-0179	St. Catherine Island Marsh Creation and Shoreline Protection	USFWS	D	D	W	W	W	W	W	W	W	W	W	W
TE-0112	North Catfish Lake Marsh Creation	NRCS	D	D	W	W	W	W	W	W	W	W	W	W
TE-0117	Island Road Marsh Creation and Nourishment	NOAA	D	D	W	W	W	W	W	W	W	W	W	W
BA-0206	Northeast Turtle Bay Marsh Creation & Critical Area Shoreline Protection	NRCS	D	D	D	D	D	D	W	W	W	W	W	W
BS-0038	Breton Landbridge Marsh Creation (West)	NOAA	D	D	D	D	D	D	W	W	W	W	W	W
ME-0031	Freshwater Bayou Marsh Creation (CWPPRA)	NRCS	D	D	D	D	D	D	W	W	W	W	W	W
PO-0173	Fritchie Marsh Creation and Terracing	NOAA	D	D	D	D	D	D	W	W	W	W	W	W
BA-0217	Grand Bayou Ridge and Marsh Creation	NOAA	D	D	D	D	D	D	W	W	W	W	W	W
CS-0078	No Name Bayou Marsh Creation & Nourishment	NOAA	D	D	D	D	D	D	W	W	W	W	W	W
CS-0081	Sabine Refuge Marsh Creation Cycles 6 & 7	USFWS	D	D	D	D	D	D	W	W	W	W	W	W
PO-0181	Bayou Cane Marsh Creation	USFWS	D	D	D	D	D	D	W	W	W	W	W	W
BS-0037	East Delacroix Marsh Creation and Terracing	NOAA	D	D	D	D	D	D	D	D	D	D	W	W
CS-0085	Long Point Bayou Marsh Creation	EPA	D	D	D	D	D	D	D	D	D	D	W	W
ME-0032	South Grand Chenier Marsh Creation - Baker Tract	NRCS	D	D	D	D	D	D	D	D	D	D	W	W
BA-0195	Barataria Bay Rim Marsh Creation and Nourishment	NRCS	W	W	W	W	W	W	W	W	W	W	W	W
PO-0034	Alligator Bend Marsh Restoration and Shoreline Protection	NRCS	W	W	W	W	W	W	W	W	W	W	W	W
PO-0075	LaBranche East Marsh Creation	NRCS	W	W	W	W	W	W	W	W	W	W	W	W
TE-0134	West Fourchon Marsh Creation	NOAA	W	W	W	W	W	W	W	W	W	W	W	W
CWPPRA Phase II Projects														
BA-0125	Northwest Turtle Bay Marsh Creation	USFWS	C	F										
TE-0138	Bayou DeCade Ridge and Marsh Creation	NOAA	C	C	C	F								
CS-0049	Cameron-Creole Freshwater Introduction	NRCS	C	C	C	F								
BA-0171	Caminada Headland Back Barrier Marsh Creation	EPA	C	C	C	C	F							
PO-0169	New Orleans Landbridge Shoreline Stabilization & Marsh Creation	USFWS	C	C	C	C	F							
ME-0020	South Grand Chenier Marsh Creation Project	USFWS	C	C	C	C	C	F						
CS-0066	Cameron Meadows Marsh Creation and Terracing	NOAA	C	C	C	C	C	C	F					



Table 3: Projected Three-Year Schedules for Active WRDA Projects (FY 2021 - 2023)

Project ID	Project Name	Federal Sponsor	CY 2020		Calendar Yr 2021				Calendar Yr 2022				CY 2023	
			1FQ 2021	2FQ 2021	3FQ 2021	4FQ 2021	1FQ 2022	2FQ 2022	3FQ 2022	4FQ 2022	1FQ 2023	2FQ 2023	3FQ 2023	4FQ 2023
Other WRDA Projects														
BA-0210	Grand Isle & Vicinity Breakwaters ¹	USACE	C	C	C	F								
LA-0020	Southwest Coastal Louisiana ²	USACE	D	D	D	D	D	D	D	W	W	W	W	W

Notes:

- 1. Project partially funded by GOMESA funds.
- 2. Project partially funded by Surplus funds.

Table 4: Projected Three-Year Schedules for Active State-Only Projects (FY 2021 - 2023)

Project ID	Project Name	Federal Sponsor	CY 2020		Calendar Yr 2021				Calendar Yr 2022				CY 2023	
			1FQ 2021	2FQ 2021	3FQ 2021	4FQ 2021	1FQ 2022	2FQ 2022	3FQ 2022	4FQ 2022	1FQ 2023	2FQ 2023	3FQ 2023	4FQ 2023
State Surplus Projects (2007, 2008, 2009)														
BA-0075-1	Jean Lafitte Tidal Protection	N/A	C	F										
TE-0153	LaCache Pump Station	N/A	C	F										
PO-0001	Violet Canal Repairs	N/A	C	C	F									
PO-0185	St. Bernard Pump Station Repairs	N/A	C	C	C	F								
TE-0154	Larose to Golden Meadow System Improvements	N/A	C	C	C	F								
TE-0064	Morganza to the Gulf	USACE	C	C	C	F								
BA-0075-2	Rosethorne Tidal Protection ¹	N/A	C	C	C	C	C	C	F					
TV-0077	North Vermilion Bay Shoreline Protection	N/A	D	D	D	D	D	C	C	C	F			
TV-0082	Freshwater Bayou Shoreline Protection	N/A	D	D	D	D	D	C	C	C	F			
PO-0167	St. Tammany Parish Coastal Protection Study	N/A	P	P	P	P	P							
State Surplus Projects (2018)														
BS-0040	Bayou Terre aux Boeufs Ridge	N/A	F											
ME-0037	Rockefeller Refuge Shoreline Protection	N/A	C	F										
Capital Outlay Projects														
AT-0023	Henderson Lake Water Management Unit Spoil Bank Gapping ^{2,3}	N/A	C	C	C	F								
N/A	Murphy Lake Depth Restoration ^{2,3}	N/A	C	C	C	F								
N/A	Buffalo Cove Water Management ^{2,3}	N/A	C	C	C	F								
AT-0022	East Grand Lake Upper Region ^{2,3}	N/A	C	C	C	C	C	F						
TE-0142	Flat Lake Study ^{2,3}	N/A	P	P	P	P								

Notes:

- 1. Project partially funded by GOMESA funds.
- 2. Project implemented through the Atchafalaya Basin Program.
- 3. Schedule currently under development.

Legend:

P Feasibility & Planning	W Awaiting Additional Funding for Implementation	F Construction Complete	I Program Implementation
D Engineering & Design	C Construction	B Both Design & Construction	

Annual Plan

Projected Three-Year Schedules for Active Projects

Table 5: Projected Three-Year Schedules for Active HSDRRS and Other Federal Protection Projects (FY 2021 - 2023)¹

Project ID	Project Name	Federal Sponsor	CY 2020		Calendar Yr 2021				Calendar Yr 2022				CY 2023		
			1FQ 2021	2FQ 2021	3FQ 2021	4FQ 2021	1FQ 2022	2FQ 2022	3FQ 2022	4FQ 2022	1FQ 2023	2FQ 2023	3FQ 2023	4FQ 2023	
PO-0121	HSDRRS Mitigation- LPV ^{2,3}	USACE	C	C	F										
BA-0109	HSDRRS Mitigation- WBV ^{2,3}	USACE	C	C	C	F									
PO-0057	SELA- Overall ^{2,3}	USACE	C	C	C	C	C	C	C	F					
BA-0067	New Orleans to Venice ^{2,3,4}	USACE	C	C	C	C	C	C	C	C	C	C	C	C	C
PO-0062	West Shore-Lake Pontchartrain, Louisiana Hurricane Protection ^{1,4}	USACE	D	D	B	B	B	C	C	C	C	C	C	C	F
BA-0158	New Orleans to Venice Mitigation - Plaquemines Non-Federal ^{2,3}	USACE	P	P	D	D	D	D	C	C	C	C	C	C	C
BA-0159	New Orleans to Venice Mitigation - Federal ^{2,3}	USACE	P	P	D	D	D	D	C	C	C	C	C	C	C
BA-0211	Upper Barataria Basin Flood Management	USACE	P	P	P	P	P	P	P	P					
BA-0212	WBV Risk Reduction	USACE	P	P	P	P	P	P	P	P					
PO-0182	LPV Risk Reduction	USACE	P	P	P	P	P	P	P	P					
TV-0054	South Central Coastal Plan	USACE	P	P	P	P	P	P	P	P					
Not Avail.	USACE Bayou Courtableau and Bayou Des Glaises	USACE	P	P	P	P	P	P	P	P	P	P	P	P	P

Notes:

1. OM&M duties are the responsibility of the local sponsor.
2. Schedule based on USACE estimates.
3. State expenditures may be covered with Surplus allocation for HSDRRS LERRDS.
4. Project partially funded by GOMESA funds.

Table 6: Projected Three-Year Schedules for Active GOMESA Projects (FY 2021 - 2023)

Project ID	Project Name	Federal Sponsor	CY 2020		Calendar Yr 2021				Calendar Yr 2022				CY 2023		
			1FQ 2021	2FQ 2021	3FQ 2021	4FQ 2021	1FQ 2022	2FQ 2022	3FQ 2022	4FQ 2022	1FQ 2023	2FQ 2023	3FQ 2023	4FQ 2023	
BA-0216	Magnolia Ridge Levee Lift and Road	BOEM	F												
BA-0218	Levee Improvements for Gheens Community	BOEM	F												
BA-0232	Des Allemands FDA Pump Station Rehabilitation	BOEM	C	F											
TE-0152	Storm Surge Risk Reduction for US-90 at Bayou Folsé	BOEM	C	F											
BA-0231	Storm Surge Risk Reduction for Reach E-North- Elevation to +14.5 ft	BOEM	C	C	F										
TE-0148	40 Arpent Canal Levee- Lockport Co. Canal to Butch Hill Station	BOEM	C	C	F										
N/A	T-Wall Kellogg Pump Station1	BOEM	C	C	C	F									
N/A	Reach L Mitigation (SLLD)1	BOEM	C	C	C	F									
N/A	Storm Surge Risk Reduction for reach D-South Elevation to +18 ft (SLLD) ¹	BOEM	C	C	C	F									
N/A	Floodwall Improvement for reach D-South at Crawfish Farm (SLLD) ¹	BOEM	C	C	C	F									
TE-0151	Grand Bayou Floodgate	BOEM	C	C	C	C	F								
BA-0221	Pumping Capacity Improvements Phase 1	BOEM	C	C	C	C	C	C	C	C	F				
AT-0017	Bayou Chene Floodgate	BOEM	C	C	C	C	C	C	C	C	F				
N/A	Magnolia Ridge Levee Pipeline T-Wall	BOEM	D	D	C	C	C	C	C	F					
TE-0147	Hollywood Canal Closure Structure	BOEM	D	D	D	D	C	C	C	C	C	F			
N/A	Goose Bayou (Penn Levee) ¹	BOEM	D	D	D	D	C	C	C	C	C	C	C	F	
BA-0219	Davis Pond Upper Barataria Risk Reduction	BOEM	D	D	D	D	D	D	C	C	C	C	F		
N/A	100-yr Levee Lift; NOV-NF-W-4, Oakville to LaReusitte and MRL 1791	BOEM	D	D	D	D	D	D	D	C	C	C	C	F	
BA-0222	NOV-NF Drainage Canal Relocation	BOEM	D	D	D	D									
BA-0220	Sunset Levee Upper Barataria Risk Reduction (UBRR)	BOEM	D	D	D	D	D	D							
PO-0184	St. Tammany Storm Surge Risk Reduction	BOEM	D	D	D	D	D	D	D	D	D	D	D	D	D



Table 7: Projected Three-Year Schedules for Active CDBG Projects (FY 2021 - 2023)

Project ID	Project Name	Federal Sponsor	CY 2020		Calendar Yr 2021				Calendar Yr 2022				CY 2023	
			1FQ 2021	2FQ 2021	3FQ 2021	4FQ 2021	1FQ 2022	2FQ 2022	3FQ 2022	4FQ 2022	1FQ 2023	2FQ 2023	3FQ 2023	4FQ 2023
LA-0290	Statewide Floodplain Management (Watershed Initiative)	HUD	I	I	I	I	I	I	I	I	I	I	I	I

Table 8: Projected Three-Year Schedules for Active and Proposed Oil Spill Projects (FY 2021 - 2023)

Project ID	Project Name	Federal Sponsor	CY 2020		Calendar Yr 2021				Calendar Yr 2022				CY 2023	
			1FQ 2021	2FQ 2021	3FQ 2021	4FQ 2021	1FQ 2022	2FQ 2022	3FQ 2022	4FQ 2022	1FQ 2023	2FQ 2023	3FQ 2023	4FQ 2023
Deepwater Horizon NRDA Projects														
AT-0019	Atchafalaya WMA Boat Launch	N/A	F											
ME-0036	Rockefeller Piers and Signage	N/A	F											
MR-0169	Pass-a-Loutre Crevasses NRDA	N/A	C	F										
MR-0170	Pass-a-Loutre Campgrounds NRDA	N/A	C	F										
TE-0146	Pointe-aux-Chenes WMA Enhancements	N/A	C	F										
BA-0213	Bayou Segnette State Park Improvements	N/A	C	C	F									
PR-0001	Middle Pearl River WMA Boat Launch	N/A	C	C	F									
AT-0020	Atchafalaya WMA Campground Improvements	N/A	C	C	F									
BA-0214	Grand Isle State Park Improvements	N/A	C	C	C	C	F							
CS-0080	Rabbit Island Restoration	N/A	C	C	C	C	F							
TV-0081	Cypremort Point State Park Improvements	N/A	C	C	C	C	F							
BA-0197	West Grand Terre Beach Nourishment and Stabilization ¹	N/A	C	C	C	C	C	F						
BA-0203	Barataria Basin Ridge and Marsh Restoration- Spanish Pass Increment	N/A	C	C	C	C	C	C	F					
BA-0240	Grande Cheniere Ridge Marsh Creation	N/A	D	D	C	C	C	C	C	F				
PO-0163	Golden Triangle Marsh Creation ¹	N/A	D	C	C	C	C	C	C	F				
BA-0207	Large-Scale Barataria Marsh Creation	N/A	D	C	C	C	C	C	C	C	F			
PO-0174	Biloxi Marsh Living Shoreline Project ¹	N/A	D	D	C	C	C	C	C	C	C	F		
PO-0180	Lake Borgne Marsh Creation- Increment 1	N/A	D	C	C	C	C	C	C	C	C	C	F	
TE-0139	Terrebonne Basin Ridge and Marsh Creation- Bayou Terrebonne Increment	N/A	D	D	D	D	D	D	C	C	C	C	C	C
NFWF Projects														
TE-0143	Terrebonne Basin Barrier Island and Beach Nourishment	N/A	C	C	C	C	C	F						
BA-0153	Mid-Barataria Sediment Diversion	N/A	D	D	D	D	D	D	D	W	W	W	W	W
BS-0030	Mid-Breton Sediment Diversion	N/A	D	D	D	D	D	D	D	D	D	D	D	D
TE-0110	Increase Atchafalaya Flow to Eastern Terrebonne	N/A	D	D	D	D	D	D	D	D	D	D	D	D
LA-0276	Sediment Diversion Implementation and Program Management	N/A	I	I	I	I	I	I	I	I	I	I	I	I
RESTORE Projects														
TE-0113	Houma Navigation Canal Lock Complex	N/A	C	C	C	C	C	C	C	C	C	C	F	
PO-0029	River Reintroduction into Maurepas Swamp	N/A	D	D	D	D	D	D	C	C	C	C	C	C
CS-0065	Calcasieu Ship Channel Salinity Control Measures	N/A	D	D	D	D	D	D	D	D	C	C	C	C
MR-0168	Lowermost Mississippi River Management Program	N/A	P	P	P	P	P	P	P	P				
N/A	Parish Matching Program	N/A	I	I	I	I	I	I	I	I	I	I	I	I

Legend:

P Feasibility & Planning	W Awaiting Additional Funding for Implementation	F Construction Complete	I Program Implementation
D Engineering & Design	C Construction	B Both Design & Construction	

Annual Plan

Projected Active State Projects in FY 2021

Map 2: Active Projects in FY 2021 – Southwest Region

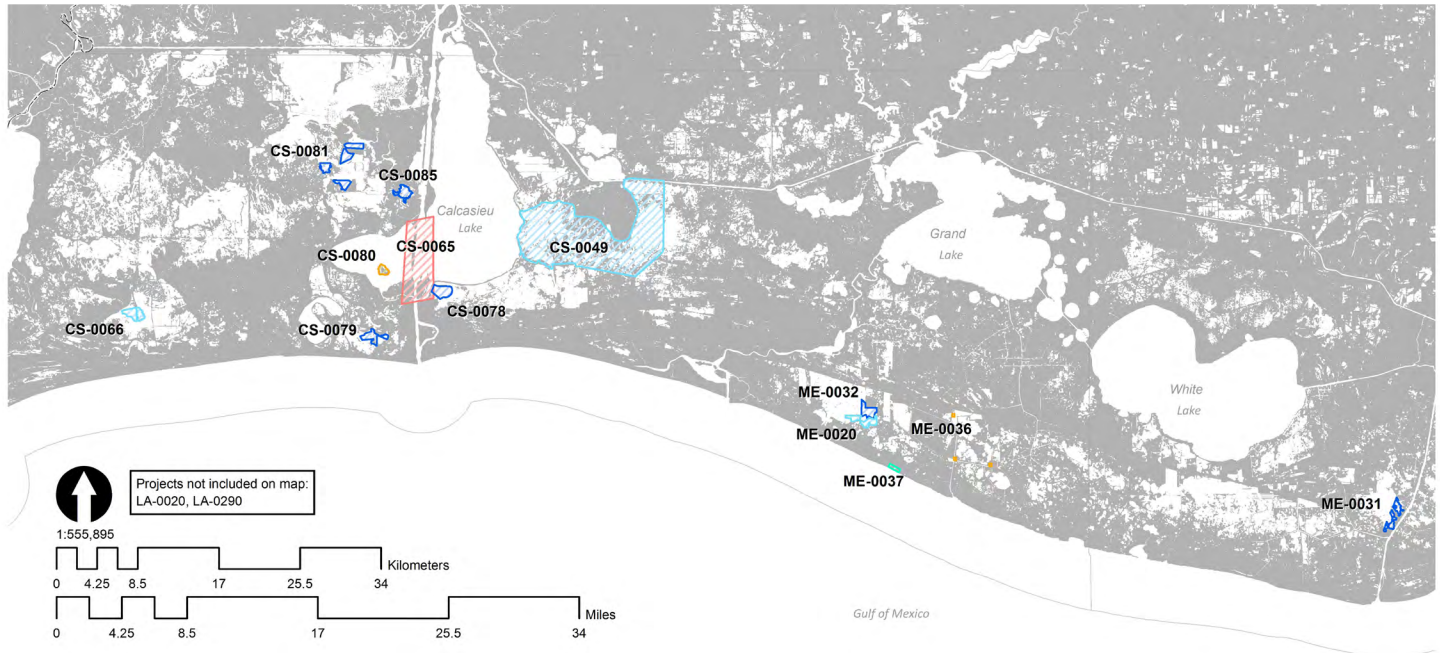


Table 9: Active Projects in FY 2021 – Southwest Region

Project ID	Project Name	Active Phase FY 2021	Total Project Estimate
CWPPRA Phase I Projects			
CS-0078	No Name Bayou Marsh Creation & Nourishment	E&D	\$29,503,137
CS-0079	Oyster Lake Marsh Creation and Nourishment	E&D	\$38,073,046
CS-0081	Sabine Refuge Marsh Creation Cycles 6 & 7	E&D	\$13,759,428
CS-0085	Long Point Bayou Marsh Creation	E&D	\$11,943,904
ME-0031	Freshwater Bayou Marsh Creation (CWPPRA)	E&D	\$26,756,513
ME-0032	South Grand Chenier Marsh Creation - Baker Tract	E&D	\$26,691,833
CWPPRA Phase II Projects			
CS-0049	Cameron-Creole Freshwater Introduction	CON	\$26,776,735
CS-0066	Cameron Meadows Marsh Creation and Terracing	CON	\$32,081,560
ME-0020	South Grand Chenier Marsh Creation Project	CON	\$23,873,346
WRDA Projects			
LA-0020	Southwest Coastal Louisiana Feasibility Study	E&D	\$3,392,226,000
State-Only Projects			
ME-0037	Rockefeller Refuge Shoreline Protection	CON	\$9,270,263
Deepwater Horizon NRDA Projects			
CS-0080	Rabbit Island Restoration	CON	\$27,000,000
ME-0036	Rockefeller Piers and Signage	CON	\$690,000
RESTORE Projects			
CS-0065	Calcasieu Ship Channel Salinity Control Measures	E&D	\$263,751,502

*RESTORE Parish Matching Projects not included-see Table 31 for reference

Map 3: Active Projects in FY 2021 – Southcentral Region

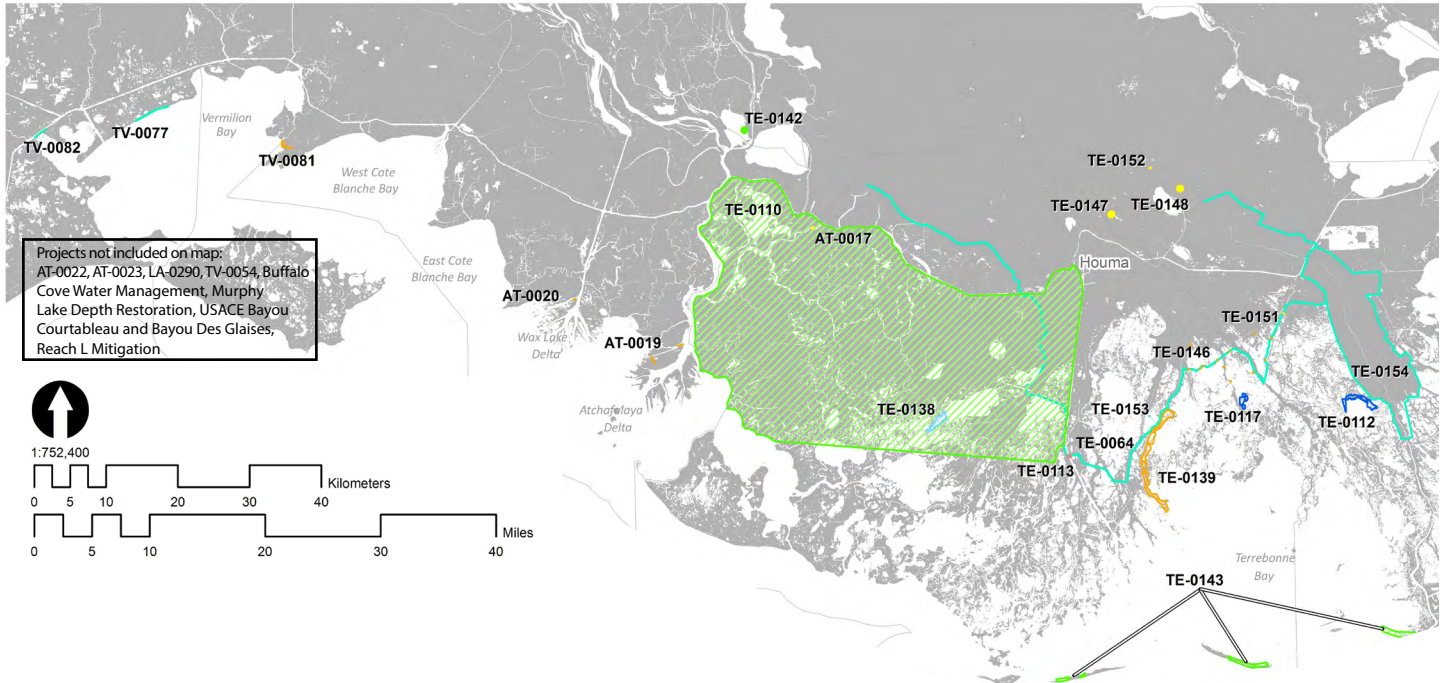


Table 10: Active Projects in FY 2021 – Southcentral Region

Project ID	Project Name	Active Phase FY 2021	Total Project Estimate
CWPPRA Phase I Projects			
TE-0112	North Catfish Lake Marsh Creation	E&D	\$31,635,887
TE-0117	Island Road Marsh Creation and Nourishment	E&D	\$40,435,267
CWPPRA Phase II Projects			
TE-0138	Bayou DeCade Ridge and Marsh Creation	CON	\$34,400,000
State Surplus Projects			
AT-0022	East Grand Lake Upper Region	CON	\$3,589,120
AT-0023	Henderson Lake Water Management Unit Spoil Bank Gapping	CON	\$500,000
TE-0064	Morganza to the Gulf	CON	\$391,600,000
TE-0142	Flat Lake Study	PLN	\$300,000
TE-0153	LaCache Pump Station	CON	\$2,000,000
TE-0154	Larose to Golden Meadow Improvements	CON	\$5,600,000
TV-0077	North Vermilion Bay Shoreline Protection	E&D	\$7,900,000
TV-0082	Freshwater Bayou Shoreline Protection	E&D	\$3,671,432
N/A	Murphy Lake Depth Restoration	CON	\$300,000
N/A	Buffalo Cove Water Management	CON	\$300,000
HSDRRS and Other Federal Protection Projects			
TV-0054	South Central Coastal Plan	PLN	\$3,000,000
N/A	USACE Bayou Courtableau and Bayou Des Glaises	PLN	\$3,000,000
Deepwater Horizon NRDA Projects			
AT-0019	Atchafalaya WMA Boat Launch	CON	\$920,450
AT-0020	Atchafalaya WMA Campground Improvements	CON	\$3,248,000
TE-0139	Terrebonne Basin Ridge and Marsh Creation- Bayou Terrebonne	E&D	\$125,450,000
TE-0146	Pointe-aux-Chenes WMA Enhancements	CON	\$5,000,000
TV-0081	Cypremort Point State Park Improvements	CON	\$4,477,338
NFWF Projects			
TE-0110	Increase Atchafalaya Flow to Eastern Terrebonne	E&D	\$415,215,000
TE-0143	Terrebonne Basin Barrier Island and Beach Nourishment	CON	\$159,974,156
RESTORE Projects			
TE-0113	Houma Navigation Canal Lock Complex	CON	\$357,784,732
GOMESA Projects			
AT-0017	Bayou Chene Option 1	CON	\$80,000,000
TE-0147	Hollywood Canal Closure Structure	E&D	\$6,792,000
TE-0148	40 Arpent Canal Levee- Lockport Co. Canal to Butch Hill Station	CON	\$10,386,418
TE-0151	Grand Bayou Floodgate	CON	\$18,500,000
TE-0152	Storm Surge Risk Reduction for US-90 at Bayou Folse	CON	\$1,804,148
N/A	Reach L Mitigation	CON	Not Avail.

*RESTORE Parish Matching Projects not included-see Table 31 for reference

Annual Plan

Projected Active State Projects in FY 2021

Map 4: Active Projects in FY 2021 – Southeast Region

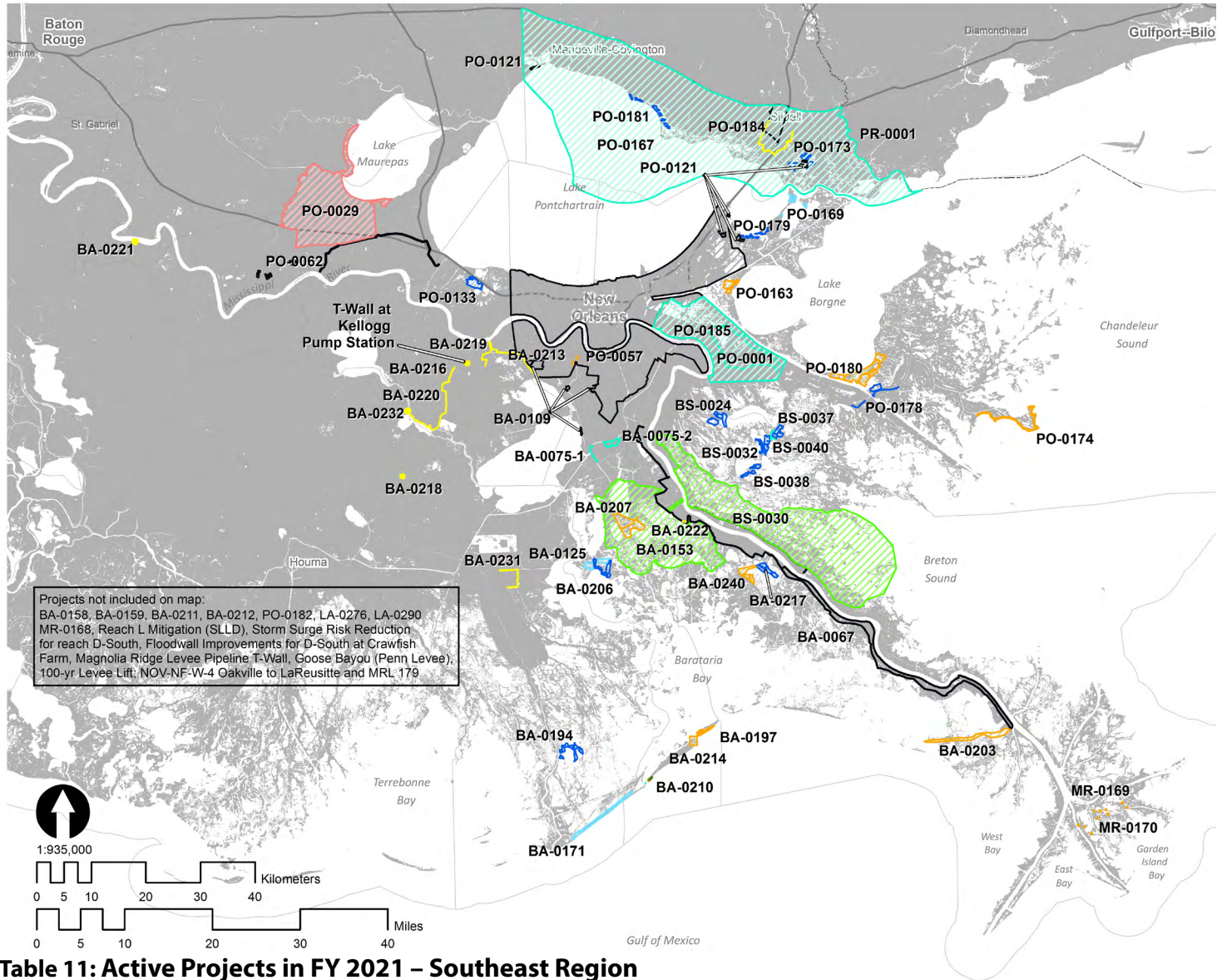


Table 11: Active Projects in FY 2021 – Southeast Region

Project ID	Project Name	Active Phase FY 2021	Total Project Estimate
CWPPRA Phase I Projects			
BA-0194	East Leeville Marsh Creation and Nourishment	E&D	\$35,066,972
BA-0206	Northeast Turtle Bay Marsh Creation & Critical Area Shoreline	E&D	\$43,482,092
BA-0217	Grand Bayou Ridge and Marsh Creation	E&D	\$40,235,427
BS-0024	Terracing and Marsh Creation South of Big Mar	E&D	\$24,942,706
BS-0032	Mid Breton Land Bridge Marsh Creation & Terracing	E&D	\$40,822,269
BS-0037	East Delacroix Marsh Creation and Terracing	E&D	\$37,816,133
BS-0038	Breton Landbridge Marsh Creation (West)	E&D	\$36,413,043
PO-0133	Labranche Central Marsh Creation	E&D	\$43,409,208
PO-0173	Fritchie Marsh Creation and Terracing	E&D	\$29,867,440
PO-0178	Bayou La Loutre Ridge Restoration and Marsh Creation	E&D	\$31,012,138
PO-0179	St. Catherine Island Marsh Creation and Shoreline Protection	E&D	\$25,324,715
PO-0181	Bayou Cane Marsh Creation	E&D	\$31,600,635
CWPPRA Phase II Projects			
BA-0125	Northwest Turtle Bay Marsh Creation	CON	\$33,664,671
BA-0171	Caminada Headland Back Barrier Marsh Creation	CON	\$32,284,094
PO-0169	New Orleans Landbridge Shoreline Stabilization & Marsh Creation	CON	\$25,446,125

*RESTORE Parish Matching Projects not included-see Table 31 for reference



Table 11: Active Projects in FY 2021 – Southeast Region (cont'd)

Project ID	Project Name	Active Phase FY 2021	Total Project Estimate
WRDA Projects			
BA-0210	Grand Isle & Vicinity Breakwaters	CON	\$15,000,000
State-Only Projects			
BA-0075-1	Jean Lafitte Tidal Protection	CON	\$33,582,639
BA-0075-2	Rosethorne Tidal Protection	CON	\$24,930,787
BS-0040	Bayou Terre aux Boeufs Ridge Restoration & Armoring Phase 1	CON	\$2,000,000
PO-0001	Violet Canal Repairs	CON	\$1,000,000
PO-0167	St. Tammany Parish Coastal Protection Study	E&D	\$2,000,000
PO-0185	St. Bernard Pump Station Repairs	CON	\$4,000,000
HSDRRS and Other Federal Protection Projects			
BA-0067	New Orleans to Venice	CON	\$1,301,523,760
BA-0109	HSDRRS Mitigation- WBV	CON	\$126,000,000
BA-0158	New Orleans to Venice Mitigation - Plaquemines Non-Federal	E&D	\$14,500,000
BA-0159	New Orleans to Venice Mitigation - Federal	E&D	\$30,000,000
BA-0211	Upper Barataria Basin Flood Management	PLN	\$3,000,000
BA-0212	WBV Risk Reduction	PLN	\$3,000,000
PO-0057	SELA- Overall	CON	\$1,170,974,586
PO-0062	West Shore-Lake Pontchartrain, Louisiana Hurricane Protection	CON	\$760,000,000
PO-0121	HSDRRS Mitigation- LPV	CON	\$85,000,000
PO-0182	LPV Risk Reduction	PLN	\$3,000,000
Deepwater Horizon NRDA Projects			
BA-0197	West Grand Terre Beach Nourishment and Stabilization	CON	\$65,000,694
BA-0203	Barataria Basin Ridge and Marsh Restoration- Spanish Pass Increment	CON	\$124,500,000
BA-0207	Large-Scale Barataria Marsh Creation	CON	\$178,251,000
BA-0213	Bayou Segnette State Park Improvements	CON	\$2,126,724
BA-0214	Grand Isle State Park Improvements	CON	\$6,126,967
BA-0240	Grande Cheniere Ridge and Marsh Creation	CON	\$65,000,000
MR-0169	Pass-a-Loutre Crevasses NRDA	CON	\$1,568,000
MR-0170	Pass-a-Loutre Campgrounds NRDA	CON	\$1,624,000
PO-0163	Golden Triangle Marsh Creation	CON	\$54,550,330
PO-0174	Biloxi Marsh Living Shoreline Project	CON	\$57,719,731
PO-0180	Lake Borgne Marsh Creation- Increment 1	CON	\$127,000,000
PR-0001	Middle Pearl River WMA Boat Launch	CON	\$575,000
NFWF Projects			
BA-0153	Mid-Barataria Sediment Diversion	E&D	\$1,410,708,675
BS-0030	Mid-Breton Sediment Diversion	E&D	\$798,609,888
LA-0276	Sediment Diversion Implementation and Program Management	PROG	Not Avail.
RESTORE Projects			
MR-0168	Lowermost Mississippi River Management Program	PLN	\$9,300,000
PO-0029	Mississippi River Reintroduction into Maurepas Swamp	E&D	\$199,854,326
GOMESA Projects			
BA-0216	Magnolia Ridge Levee Lift and Road	CON	\$3,500,000
BA-0218	Levee Improvements for Gheens Community	CON	\$2,127,992
BA-0219	Davis Pond Upper Barataria Risk Reduction	E&D	\$6,500,000
BA-0220	Sunset Levee Upper Barataria Risk Reduction	E&D	\$3,500,000
BA-0221	Pumping Capacity Improvements Phase 1	CON	\$65,000,000
BA-0222	NOV-NF Drainage Canal Relocation	E&D	\$7,500,000
BA-0231	Storm Surge Risk Reduction for Reach E-North- Elevation to +14.5	CON	\$1,500,000
BA-0232	Des Allemands FDA Pump Station Rehabilitation	CON	\$762,595
PO-0184	St. Tammany Storm Surge Risk Reduction	E&D	\$9,000,000
N/A	Magnolia Ridge Levee Pipeline T-Wall	CON	Not Avail.
N/A	Goose Bayou (Penn Levee)	E&D	Not Avail.
N/A	100-yr Levee Lift: NOV-NF-W-4, Oakville to LaReusitte and MRL 179	E&D	Not Avail.
N/A	T-Wall Kellogg Pump Station	CON	Not Avail.
N/A	Storm Surge Risk Reduction for Reach D-South Elevation to +18 ft	CON	Not Avail.

Annual Plan

Projected Three-Year Revenues and Expenditures

Table 12: Projected Three-Year Revenues (FY 2021 - FY 2023)

Revenue Sources	FY 2021	FY 2022	FY 2023	Program Total (FY 2021 - FY 2023)
CPR Trust Fund Annual Revenue ^{1,2}	\$25,000,000	\$25,000,000	\$25,000,000	\$75,000,000
CPR Trust Fund Carried Forward	\$10,368,432	\$9,652,014	\$7,107,925	\$27,128,371
CWPPRA Federal Funds ⁵	\$82,074,313	\$66,801,849	\$67,890,994	\$216,767,155
GOMESA ^{1,3}	\$70,000,000	\$70,000,000	\$100,000,000	\$240,000,000
GOMESA Carried Forward ⁴	\$42,865,120	\$8,391,491	\$59,553,760	\$110,810,371
DOTD Interagency Transfer ¹	\$4,000,000	\$4,000,000	\$4,000,000	\$12,000,000
Surplus Appropriations	\$84,392,070	\$15,871,436	\$9,072,716	\$109,336,222
Community Development Block Grants	\$2,011,680	\$2,000,000	\$2,000,000	\$6,011,680
MOEX Settlement ⁶	\$627,580	\$96,640	\$58,680	\$782,900
Capital Outlay Funds (Previously Appropriated)	\$10,553,472	\$4,982,648	TBD	\$15,536,120
NRDA Revenues (<i>Deepwater Horizon</i>)	\$350,963,418	\$408,507,714	\$684,886,201	\$1,444,357,333
NFWF Revenues (<i>Deepwater Horizon</i>)	\$163,087,674	\$80,847,778	\$24,233,428	\$268,168,880
RESTORE Revenues (<i>Deepwater Horizon</i>)	\$65,753,000	\$165,262,409	\$252,007,419	\$483,022,828
LDNR Mitigation Funds ⁷	\$500,000	\$500,000	\$500,000	\$1,500,000
LDNR Beneficial Use Funds ⁷	\$3,500,000	\$500,000	\$500,000	\$4,500,000
OM&M Federal Funds ⁸	\$19,739,903	\$15,961,801	\$13,161,370	\$48,863,074
LOSCO Funding ⁹	\$121,568	\$113,544	\$113,544	\$348,656
Gulf of Mexico Alliance Gulf Star Grant Funding ¹⁰	\$12,000	\$0	\$0	\$12,000
Project Billing ¹¹	\$22,426,432	\$23,000,000	\$23,000,000	\$68,426,432
Total Projected Revenue¹²	\$957,996,662	\$901,489,323	\$1,273,086,037	\$3,132,572,022

Notes:

1. Annually recurring revenue source to be spent in accordance with the Louisiana Constitution, specifically State Law Section 214.5.4(E) and the provisions within paragraph (3).
2. Estimate tied to mineral revenue.
3. GOMESA funds must be disbursed to the applicable states by the end of the federal fiscal year. FY 2021 GOMESA funds are anticipated to be received around April 2021 (4Q21).
4. Represents carry-forward of unexpended funds from prior-year GOMESA payments.
5. Represents anticipated Federal reimbursement for CWPPRA projects led by CPRA in which the State is initially incurring more than its 15% cost share during project implementation.
6. Represents anticipated balance as of FY 2021 of an initial deposit of \$6.75 million of funds from the MOEX settlement.
7. Supplemental funding to augment construction of eligible projects (specific projects to be determined at a later date).
8. Represents anticipated Federal reimbursement for CWPPRA and WRDA OM&M activities led by CPRA in which the State is initially incurring more than its cost share during project implementation.
9. Represents reimbursement of expenditures for CPRA (non-DWH) oil spill response activities.
10. Represents remaining balance of grant funding received in January 2018 for a pilot monitoring project.
11. Represents salary and other work-in-kind reimbursements for work performed on projects in funding programs listed in the table above.
12. New project opportunities may arise if additional funds become available after the approval of the FY 2021 Annual Plan, and conditions may necessitate reprogramming of existing funds to address changes on the ground. If necessary, reprogramming of existing and new funds would occur, with approval from the CPRA, to ensure that limited coastal program funds are allocated in accordance with Master Plan objectives. CPRA has been granted authority to reprogram dollars from approved funding streams and to reallocate dollars to best meet new opportunities or needs. Such flexibility allows the coastal program to respond effectively to unforeseen events that take place outside the legislatively mandated planning cycle.



Table 13: Projected Three-Year Expenditures¹ (FY 2021 - FY 2023)

Program / Funding Source	FY 2021	FY 2022	FY 2023	Program Total (FY 2021 - FY 2023)
CWPPRA State Expenditures (not including Surplus expenditures) ²	\$15,999,907	\$13,198,151	\$12,109,006	\$41,307,064
CWPPRA Federal Expenditures ³	\$82,074,313	\$66,801,849	\$67,890,994	\$216,767,155
GOMESA Expenditures	\$112,865,120	\$78,391,491	\$159,553,760	\$350,810,371
WRDA Project Expenditures (not including Surplus expenditures)	\$0	\$0	\$0	\$0
Surplus Projects and Program Expenditures	\$84,392,070	\$15,871,436	\$9,072,716	\$109,336,222
Community Development Block Grants	\$2,011,680	\$2,000,000	\$2,000,000	\$6,011,680
MOEX Project Expenditures	\$627,580	\$96,640	\$58,680	\$782,900
Capital Outlay Project Expenditures	\$10,553,472	\$4,982,648	TBD	\$15,536,120
State-Only Project Expenditures (Non-Surplus)	\$529,392	\$405,544	\$180,904	\$1,115,840
NRDA Expenditures (<i>Deepwater Horizon</i>)	\$350,963,418	\$408,507,714	\$684,886,201	\$1,444,357,333
NFWF Expenditures (<i>Deepwater Horizon</i>) (not including Surplus Expenditures)	\$163,087,674	\$80,847,778	\$24,233,428	\$268,168,880
RESTORE Expenditures (<i>Deepwater Horizon</i>) (not including Surplus Expenditures)	\$65,753,000	\$165,262,409	\$252,007,419	\$483,022,828
LDNR Mitigation Expenditures ⁴	\$500,000	\$500,000	\$500,000	\$1,500,000
LDNR Beneficial Use Expenditures ⁴	\$3,500,000	\$500,000	\$500,000	\$4,500,000
OM&M- State Expenditures (not including Surplus or GOMESA expenditures)	\$8,411,173	\$5,920,784	\$5,272,769	\$19,604,726
OM&M- Federal Expenditures ⁵	\$19,739,903	\$15,961,801	\$13,161,370	\$48,863,074
Gulf of Mexico Alliance Gulf Star Grant Expenditures	\$12,000	\$0	\$0	\$12,000
State Programmatic/Adaptive Management Expenditures (see Table 14)	\$6,771,142	\$11,250,000	\$9,850,000	\$27,871,142
Operating Costs (see Tables 14 and 15) ^{6,7}	\$30,204,819	\$30,991,079	\$31,808,789	\$93,004,687
Total Planned Expenditures⁸	\$957,996,662	\$901,489,323	\$1,273,086,037	\$3,132,572,022

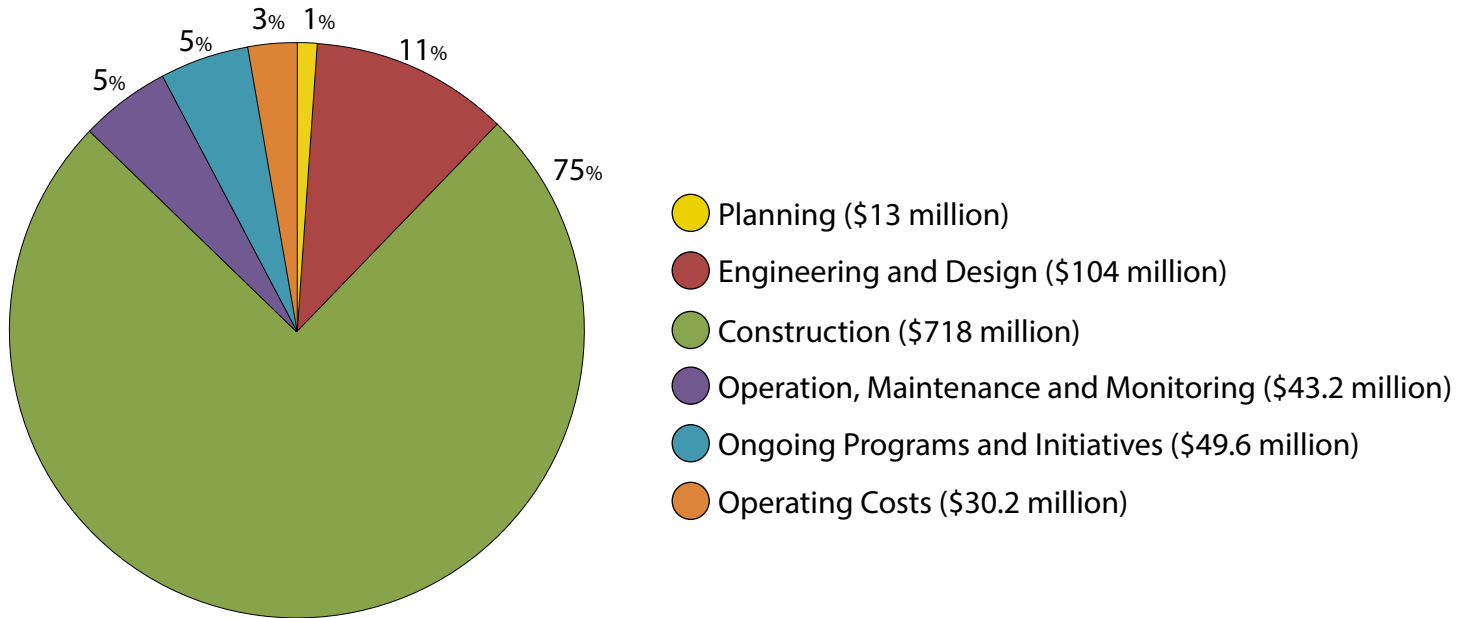
Notes:

1. Represents proposed expenditures provided that commensurate level of funding is received.
2. Because CWPPRA projects compete for funding annually, CWPPRA expenditures as presented in Table 15 (which include projected expenditures for approved projects only) do not adequately capture likely CWPPRA expenditures in outlying years. The State's estimated CWPPRA expenditures for FY 2021 - FY 2022 are therefore based on prior years' expenditures.
3. Represents anticipated Federal reimbursement for CWPPRA projects led by CPRA in which the State is initially incurring more than its 15% cost share during project implementation.
4. Supplemental funding to augment construction of eligible projects (specific projects to be determined at a later date).
5. Represents anticipated Federal reimbursement for CWPPRA and WRDA OM&M activities led by CPRA in which the State is initially incurring more than its cost share during project implementation.
6. In the event of a declared emergency, CPRA may need to expend Operating Costs in support of the State's disaster response efforts. Up to 75 percent of these expenditures would be reimbursable by FEMA.
7. Operating Costs include Three-Year Operating Expenditures (see Table 15), Assistance to Levee Authorities (see Table 14), and Project Support (see Table 14).
8. New project opportunities may arise if additional funds become available after the approval of the FY 2021 Annual Plan, and conditions may necessitate reprogramming of existing funds to address changes on the ground. If necessary, reprogramming of existing and new funds would occur, with approval from the CPRA, to ensure that limited coastal program funds are allocated in accordance with Master Plan objectives. CPRA has been granted authority to reprogram dollars from approved funding streams and to reallocate dollars to best meet new opportunities or needs. Such flexibility allows the coastal program to respond effectively to unforeseen events that take place outside the legislatively mandated planning cycle.

Annual Plan

Projected Three-Year Expenditures by Project Phase

Figure 1: Projected FY 2021 Expenditures by Project Phase

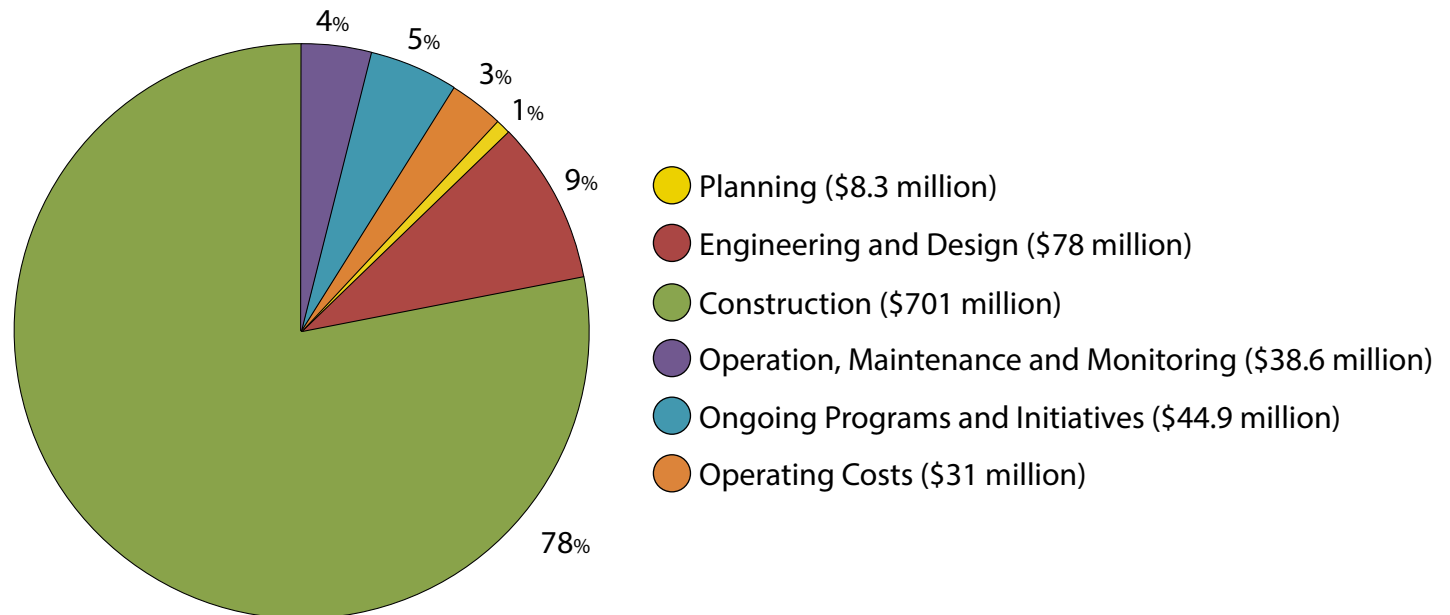


Notes

- Construction includes Beneficial Use (\$2M)
- OM&M includes BIMP (\$2.6M) and Repair/Rehabilitation of Projects (\$1.1M)
- Operating Costs include Assistance to Levee Authorities (\$1M) and Project Support (\$5M)

TOTAL Expenditures
\$958 million

Figure 2: Projected FY 2022 Expenditures by Project Phase

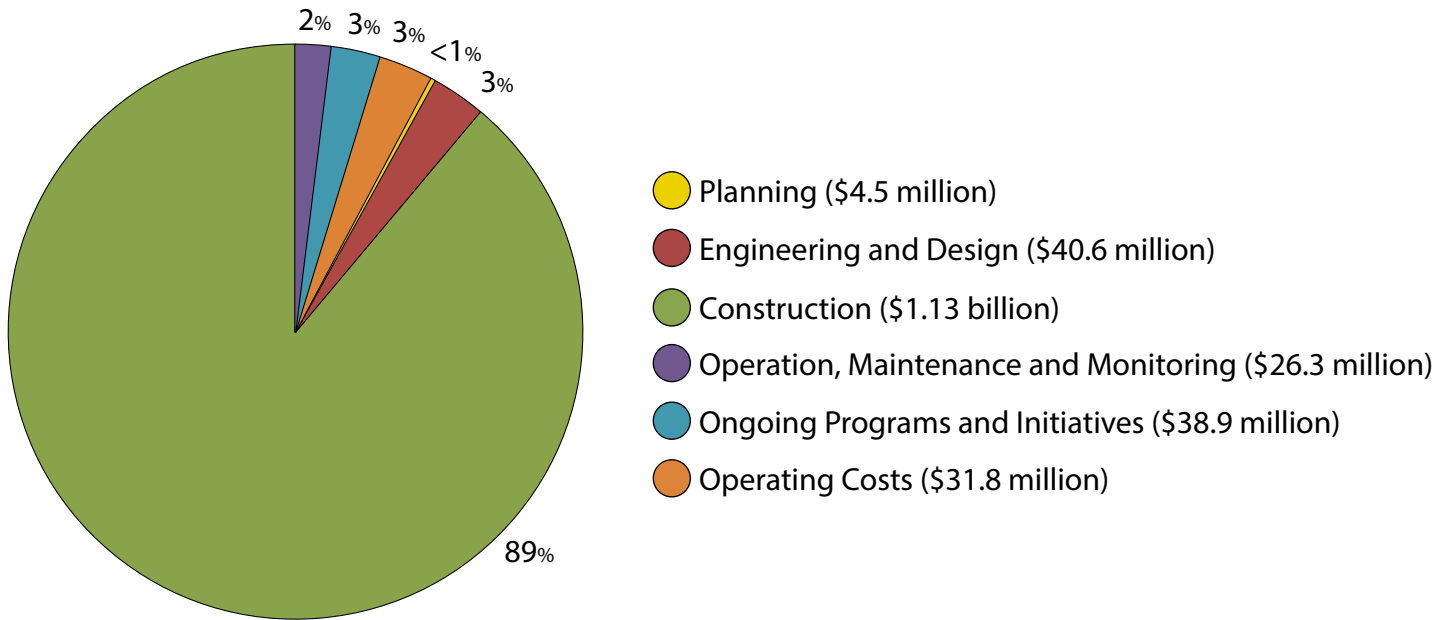


Notes

- Construction includes Beneficial Use (\$2M)
- Engineering and Design and Construction include CWPPRA adjustment for outlying years (see Table 13 for explanation)
- Operating Costs include Assistance to Levee Authorities (\$1M) and Project Support (\$5M)

TOTAL Expenditures
\$901 million

Figure 3: Projected FY 2023 Expenditures by Project Phase



Notes

- Construction includes Beneficial Use (\$2M)
- Engineering and Design and Construction include CWPPRA adjustment for outlying years (see Table 13 for explanation)
- Operating Costs include Assistance to Levee Authorities (\$1M) and Project Support (\$5M)

TOTAL Expenditures
\$1.27 billion

Annual Plan

Projected Programmatic Three-Year Expenditures

Table 14: Projected Programmatic Three-Year Expenditures (FY 2021 - FY 2023)

Program ID	Program Name	FY 2021	FY 2022	FY 2023	Program Total (FY 2021 - FY 2023)
Ongoing Program Expenditures					
N/A	Beneficial Use Program	\$2,000,000	\$2,000,000	\$2,000,000	\$6,000,000
LA-0251	Barrier Island Maintenance Program ¹	\$2,529,424	TBD	TBD	\$2,529,424
N/A	Vegetative Plantings	\$400,000	\$400,000	\$400,000	\$1,200,000
PO-0162	Assistance to Levee Authorities	\$1,000,000	\$1,000,000	\$1,000,000	\$3,000,000
LA-0028	Restoration Partnerships ¹	\$1,000,000	\$1,000,000	\$1,000,000	\$3,000,000
N/A	Project Support	\$5,000,000	\$5,000,000	\$5,000,000	\$15,000,000
Total Ongoing Programs Expenditures		\$11,929,424	\$9,400,000	\$9,400,000	\$30,729,424
Adaptive Management Expenditures					
Future Project Development					
LA-0255	Project Development and Implementation Program	\$400,000	\$400,000	\$400,000	\$1,200,000
LA-0261	Non-structural Program Development ¹	\$3,000,000	\$3,000,000	\$3,000,000	\$9,000,000
Focused Applied Research					
LA-0158	Coastal Science Assistantship Program ²	\$335,000	\$350,000	\$350,000	\$1,035,000
Science and Technical Advisory Boards					
LA-0260	Master Plan Advisory Committees ²	\$150,000	\$150,000	\$75,000	\$375,000
Model Development and Refinement					
LA-0250	Master Plan Predictive Models ²	\$4,000,000	\$4,000,000	\$2,000,000	\$10,000,000
MR-0016-SSPM	Small Scale Physical Model ³	\$500,000	\$500,000	\$500,000	\$1,500,000
System Wide Assessment and Monitoring Program (SWAMP)					
N/A	Fisheries ⁵	\$2,338,500	\$2,330,000	\$2,330,000	\$6,998,500
N/A	SWAMP Implementation ^{3,4,5}	\$13,950,000	\$10,500,000	\$8,280,000	\$32,730,000
LA-0226	Barrier Island Comprehensive Monitoring ³	\$3,676,625	\$2,540,625	\$1,164,625	\$7,381,875
LA-0030	CRMS-Wetlands	\$1,050,000	\$3,650,000	\$2,550,000	\$7,250,000
N/A	Regional Geology and Sediment Management ⁴	\$830,000	\$830,000	\$830,000	\$2,490,000
Data Management and Analysis					
LA-0258	Data Management ⁴	\$2,750,000	\$2,750,000	\$3,000,000	\$8,500,000
LA-0254	Monitoring Data Interpretations ^{3,4,5}	\$1,050,000	\$1,050,000	\$750,000	\$2,850,000
Communication and Messaging					
N/A	Workshop and Conference Development	\$150,000	\$175,000	\$175,000	\$500,000
N/A	Language Access	\$25,000	\$25,000	\$25,000	\$75,000
LA-0249	Coastal Education	\$600,000	\$600,000	\$600,000	\$1,800,000
Total Adaptive Management Expenditures		\$34,805,125	\$32,850,625	\$26,029,625	\$93,685,375
TOTAL Programmatic Expenditures		\$46,734,549	\$42,250,625	\$35,429,625	\$124,414,799
Programmatic Surplus Expenditures (See Table 20)		\$4,383,282	\$0	\$0	\$4,383,282
Programmatic NRDA Expenditures (See Table 28)		\$11,215,125	\$8,846,431	\$6,682,690	\$26,744,246
Programmatic NFWF Expenditures (See Table 28)		\$6,350,000	\$4,989,785	\$4,114,516	\$15,454,301
Programmatic RESTORE Expenditures (See Table 28)		\$7,530,000	\$6,664,409	\$6,357,419	\$20,551,828
Programmatic GOMESA Expenditures		\$4,485,000	\$4,500,000	\$2,425,000	\$11,410,000
Programmatic Operations Expenditures		\$12,771,142	\$17,250,000	\$15,850,000	\$45,871,142



Table 15: Projected State Protection and Restoration Three-Year Operating Expenditures (FY 2021 - FY 2023)

Program	FY 2021	FY 2022	FY 2023	Program Total (FY 2021 - FY 2023)
CPRA	\$19,656,500	\$20,442,760	\$21,260,470	\$61,359,730
OCM	\$2,827,134	\$2,827,134	\$2,827,134	\$8,481,402
Office of the Governor - Coastal Activities	\$1,536,185	\$1,536,185	\$1,536,185	\$4,608,555
Office of the Attorney General	\$185,000	\$185,000	\$185,000	\$555,000
Total Operating Costs	\$24,204,819	\$24,991,079	\$25,808,789	\$75,004,687

Notes:

1. FY 2021 expenditures funded at least partially with Surplus funds (supplemental funding from the Trust Fund may also be utilized).
2. FY 2021 expenditures funded by GOMESA funds.
3. FY 2021 expenditures funded by NFWF Adaptive Management funds.
4. FY 2021 expenditures funded by RESTORE Adaptive Management funds.
5. FY 2021 expenditures funded by NRDA Adaptive Management funds.

Annual Plan

Projected Project Expenditures

Table 16. Coastal Wetlands Planning, Protection and Restoration Act (CWPPRA) Projected Expenditures

Project ID	Project Name	FY 2021	FY 2022	FY 2023	Project Total (FY 2021 - FY 2023)
Engineering and Design (P1)					
BA-0194	East Leeville Marsh Creation and Nourishment ¹	\$229,320	\$0	\$0	\$229,320
BA-0195	Barataria Bay Rim Marsh Creation and Nourishment	\$5,920	\$0	\$0	\$5,920
BA-0206	Northeast Turtle Bay Marsh Creation & Critical Area Shoreline Protection	\$29,600	\$29,600	\$0	\$59,200
BA-0217	Grand Bayou Ridge and Marsh Creation ¹	\$311,840	\$11,840	\$0	\$323,680
BS-0024	Terracing and Marsh Creation South of Big Mar ¹	\$23,680	\$0	\$0	\$23,680
BS-0032	Mid Breton Land Bridge Marsh Creation & Terracing	\$150,200	\$0	\$0	\$150,200
BS-0037	East Delacroix Marsh Creation and Terracing ¹	\$765,128	\$765,128	\$0	\$1,530,256
BS-0038	Breton Landbridge Marsh Creation (West) ¹	\$680,472	\$680,472	\$0	\$1,360,944
CS-0078	No Name Bayou Marsh Creation and Nourishment ¹	\$217,760	\$0	\$0	\$217,760
CS-0079	Oyster Lake Marsh Creation and Nourishment ¹	\$23,680	\$0	\$0	\$23,680
CS-0081	Sabine Refuge Marsh Creation Cycles 6 & 7	\$190,000	\$70,000	\$0	\$260,000
CS-0085	Long Point Bayou Marsh Creation ¹	\$609,322	\$680,913	\$0	\$1,290,235
ME-0031	Freshwater Bayou Marsh Creation	\$4,736	\$4,736	\$0	\$9,472
ME-0032	South Grand Chenier Marsh Creation- Baker Tract	\$2,368	\$1,184	\$1,184	\$4,736
PO-0133	LaBranche Central Marsh Creation	\$11,840	\$0	\$0	\$11,840
PO-0173	Fritchie Marsh Creation and Terracing	\$55,247	\$55,247	\$0	\$110,493
PO-0178	Bayou LaLoutre Ridge Restoration and Marsh Creation ¹	\$45,000	\$0	\$0	\$45,000
PO-0179	St. Catherine Island Marsh Creation and Shoreline Protection ¹	\$38,580	\$0	\$0	\$38,580
PO-0181	Bayou Cane Marsh Creation	\$845,000	\$435,000	\$0	\$1,280,000
TE-0112	North Catfish Lake Marsh Creation	\$45,000	\$0	\$0	\$45,000
TE-0117	Island Road Marsh Creation and Nourishment ¹	\$14,600	\$0	\$0	\$14,600
N/A	New CWPPRA Phase 1 Projects	\$4,960,000	\$4,960,000	\$2,480,000	\$12,400,000
Construction (P2)					
BA-0125	Northwest Turtle Bay Marsh Creation ¹	\$1,620,000	\$0	\$0	\$1,620,000
BA-0171	Caminada Headlands Back Barrier Marsh Creation ¹	\$14,886,196	\$2,122,844	\$0	\$17,009,040
CS-0049	Cameron-Creole Freshwater Introduction	\$452,439	\$0	\$0	\$452,439
CS-0066	Cameron Meadows Marsh Creation and Terracing ¹	\$26,142,628	\$29,600	\$0	\$26,172,228
PO-0169	New Orleans Landbridge Shoreline Stabilization and Marsh Creation ¹	\$14,750,000	\$3,750,000	\$0	\$18,500,000
ME-0020	South Grand Chenier Marsh Creation Project	\$729,537	\$1,094,306	\$0	\$1,823,843
TE-0138	Bayou DeCade Ridge and Marsh Creation ¹	\$15,234,126	\$3,808,532	\$0	\$19,042,658
N/A	New CWPPRA Phase 2 Projects	\$15,000,000	\$30,000,000	\$15,000,000	\$60,000,000
Subtotal		\$98,074,219	\$48,499,401	\$17,481,184	\$164,054,804
Adjustment for Outlying Years²		N/A	\$31,500,599	\$62,518,816	\$94,019,415
Total Expenditures		\$98,074,219	\$80,000,000	\$80,000,000	\$258,074,219
Federal Expenditures (see Note 1)		\$82,074,313	\$66,801,849	\$67,890,994	\$216,767,155
Trust Fund Expenditures		\$15,999,907	\$13,198,151	\$12,109,006	\$41,307,064

Notes:

1- Project is being led by CPRA; projected expenditures include Federal funds; any State expenditures beyond its 15% cost share will be reimbursed by the Federal partner.

2- Because CWPPRA projects compete for funding annually, CWPPRA expenditures as presented in Table 16 (which include projected expenditures for approved projects only) do not adequately capture likely CWPPRA expenditures in outlying years. The State's estimated CWPPRA expenditures for FY 2022 - FY 2023 are therefore based on prior years' expenditures.



Table 17. Louisiana WRDA Projected Expenditures

Project ID	Project Name	FY 2021	FY 2022	FY 2023	Project Total (FY 2021 - FY 2023)
BA-0210	Grand Isle & Vicinity Breakwaters ¹	\$8,880	\$0	\$0	\$8,880
LA-0020	Southwest Coastal Louisiana ²	\$300,000	\$300,000	\$122,355	\$722,355
Total Expenditures		\$308,880	\$300,000	\$122,355	\$731,235
GOMESA Expenditures for WRDA (see Table 29)		(\$8,880)	\$0	\$0	(\$8,880)
Surplus Expenditures for WRDA (see Table 20)		(\$300,000)	(\$300,000)	(\$122,355)	(\$722,355)
Trust Fund Expenditures for WRDA		\$0	\$0	\$0	\$0

Notes:

1- Project expenditures are funded through GOMESA revenues (see Table 29).

2- Project expenditures are funded through Surplus revenues (see Table 20); expenditures in future fiscal years will be covered with accrued credit or Trust Fund dollars.

Table 18. Community Development Block Grant (CDBG) Projected Expenditures

Project ID	Project Name	FY 2021	FY 2022	FY 2023	Project Total (FY 2021 - FY 2023)
LA-0290	Statewide Floodplain Management (Watershed Initiative)	\$2,000,000	\$2,000,000	\$2,000,000	\$6,000,000
N/A	CDBG Program Administration	\$11,680	\$0	\$0	\$11,680
Total Expenditures		\$2,011,680	\$2,000,000	\$2,000,000	\$6,011,680

Table 19. State-Only Project Expenditures (Non-Surplus)

Project ID	Project Name	FY 2021	FY 2022	FY 2023	Project Total (FY 2021 - FY 2023)
MOEX Projects					
PO-0142	Hydrologic Restoration of the Amite River Diversion Canal ¹	\$627,580	\$96,640	\$58,680	\$782,900
Capital Outlay Projects					
BA-0075-2	Rosethorne Tidal Protection ²	\$5,000,000	\$3,547,000	\$0	\$8,547,000
TE-0064	Morganza to the Gulf ²	\$2,000,000	\$0	\$0	\$2,000,000
TE-0142	Flat Lake Study ³	\$300,000	\$0	\$0	\$300,000
AT-0022	East Grand Lake Upper Region ³	\$2,153,472	\$1,435,648	\$0	\$3,589,120
AT-0023	Henderson Lake Water Management Unit Spoil Bank Gapping ³	\$500,000	\$0	\$0	\$500,000
N/A	Murphy Lake Depth Restoration ³	\$300,000	\$0	\$0	\$300,000
N/A	Buffalo Cove Water Management ³	\$300,000	\$0	\$0	\$300,000
Projects with Trust Fund Expenditures					
BA-0066	West Bank and Vicinity ²	\$56,240	\$0	\$0	\$56,240
BA-0109	HSDRRS Mitigation- WBV ⁴	\$0	\$0	\$0	\$0
BA-0158	New Orleans to Venice Mitigation- Plaquemines Non-Fed ⁴	\$11,680	\$11,680	\$11,680	\$35,040
BA-0159	New Orleans to Venice Mitigation- Fed ⁴	\$11,680	\$11,680	\$11,680	\$35,040
BA-0211	Upper Barataria Basin Flood Management ⁴	\$30,368	\$30,368	\$0	\$60,736
BA-0212	WBV Risk Reduction ⁴	\$30,368	\$30,368	\$0	\$60,736
PO-0057	SELA- Overall ⁴	\$7,400	\$7,400	\$7,400	\$22,200
PO-0121	HSDRRS Mitigation- LPV ⁴	\$0	\$0	\$0	\$0
PO-0182	LPV Risk Reduction ⁴	\$30,368	\$30,368	\$0	\$60,736
TV-0054	South Central Coastal Plan ⁴	\$30,368	\$30,368	\$0	\$60,736
N/A	USACE Bayou Courtableau and Bayou Des Glaises ⁴	\$30,368	\$30,368	\$30,368	\$91,104
Trust Fund Expenditures for Surplus Projects⁵					
BA-0075-1	Jean Lafitte Tidal Protection	\$11,840	\$0	\$0	\$11,840
BA-0075-2	Rosethorne Tidal Protection	\$36,408	\$36,408	\$0	\$72,816
LA-0020	Southwest Coastal Louisiana	\$30,368	\$30,368	\$30,368	\$91,104
PO-0062	West Shore Lake Pontchartrain	\$23,680	\$23,680	\$23,680	\$71,040
PO-0167	St. Tammany Parish Coastal Protection Study	\$118,400	\$96,200	\$60,400	\$275,000
TE-0064	Morganza to the Gulf	\$59,200	\$30,368	\$0	\$89,568
TV-0077	North Vermilion Bay Shoreline Protection	\$2,960	\$2,960	\$2,368	\$8,288
TV-0082	Freshwater Bayou Shoreline Protection	\$2,960	\$2,960	\$2,960	\$8,880
BS-0040	Bayou Terre aux Boeufs Ridge Restoration and Armoring Phase 1	\$2,368	\$0	\$0	\$2,368
ME-0037	Rockefeller Refuge Shoreline Protection	\$2,368	\$0	\$0	\$2,368
Total State Expenditures		\$11,710,444	\$5,484,832	\$239,584	\$17,434,860

Notes:

1- Projected expenditures are for post-construction activities including site assessment, nutria control, and vegetative plantings.

2- Project receiving supplemental funding from Surplus funds (see Table 20).

3- Project to be implemented under the Atchafalaya Basin program.

4- Project is currently 100% Federal. Projected expenditures are for staff coordination with Federal project team members.

Annual Plan

Projected Project Expenditures

Table 20. Surplus Projected Expenditures

Project ID	Project Name	FY 2021	FY 2022	FY 2023	Project Total (FY 2021 - FY 2023)
2007, 2008, 2009 Surplus - Project Expenditures					
BA-0045	Caminada Headland Beach and Dune Restoration ¹	\$17,620	\$96,312	\$86,840	\$200,772
BA-0071	Medium Diversion with Dedicated Dredging at Myrtle Grove ²	\$2,811,261	\$0	\$0	\$2,811,261
BA-0075-1	Jean Lafitte Tidal Protection	\$600,000	\$0	\$0	\$600,000
BA-0233	Grand Isle Bayside Segmented Rock Breakwater Project and Habitat Enhancements ³	\$500,000	\$0	\$0	\$500,000
LA-0020	Southwest Coastal Louisiana	\$300,000	\$300,000	\$122,355	\$722,355
PO-0001	Violet Canal Repairs ³	\$1,000,000	\$0	\$0	\$1,000,000
PO-0062	West Shore Lake Pontchartrain	\$5,000,000	\$0	\$0	\$5,000,000
PO-0063	Lake Pontchartrain and Vicinity	\$11,149,845	\$281,140	\$306,511	\$11,737,496
PO-0167	St. Tammany Parish Coastal Protection Study	\$600,000	\$500,000	\$400,000	\$1,500,000
PO-0185	St. Bernard Pump Station Repairs ³	\$4,000,000	\$0	\$0	\$4,000,000
TE-0064	Morganza to the Gulf	\$2,676,032	\$0	\$0	\$2,676,032
TE-0153	LaCache Pump Station ³	\$1,600,000	\$0	\$0	\$1,600,000
TE-0154	Larose to Golden Meadow System Improvements ⁴	\$2,115,887	\$0	\$0	\$2,115,887
TV-0077	North Vermilion Bay Shoreline Protection	\$251,700	\$5,454,904	\$1,865,096	\$7,571,700
TV-0082	Freshwater Bayou Shoreline Protection	\$390,000	\$3,000,000	\$0	\$3,390,000
N/A	Lafitte Area Independent Levee District Tidal Protection ^{3,5}	\$0	\$5,500,000	\$5,500,000	\$11,000,000
N/A	Southeast Louisiana Flood Protection/ LERRDS ⁶	\$38,030,095	\$739,080	\$791,914	\$39,561,089
2007, 2008, 2009 Surplus - Programmatic Expenditures					
LA-0026	Rehabilitation and Repair of State Restoration Projects	\$1,098,239	\$0	\$0	\$1,098,239
LA-0027	Barrier Island Maintenance Program	\$2,529,424	\$0	\$0	\$2,529,424
N/A	Coastal Wetland Planning, Protection and Restoration Act (CWPPRA) ⁷	\$451,189	\$0	\$0	\$451,189
N/A	Emergency Reserve	\$116,920	\$0	\$0	\$116,920
N/A	Non-Structural Program Development ⁸	\$853,858	\$0	\$0	\$853,858
2018 Surplus Expenditures					
BA-0197	West Grand Terre- LDWF Camp Removal	\$1,800,000	\$0	\$0	\$1,800,000
LA-0028	Restoration Partnerships	\$1,000,000	\$0	\$0	\$1,000,000
BS-0040	Bayou Terre aux Boeufs Ridge Restoration and Armoring Phase 1	\$500,000	\$0	\$0	\$500,000
ME-0037	Rockefeller Refuge Shoreline Protection	\$5,000,000	\$0	\$0	\$5,000,000
PO-0062	West Shore Lake Pontchartrain	\$6,000,000	\$24,000,000	\$0	\$30,000,000
Total Expenditures		\$84,392,070	\$15,871,436	\$9,072,716	\$109,336,222

Notes:

1- Surplus funds include post-construction monitoring expenditures (see Table 23).

2- Includes funding for Mid-Barataria Sediment Diversion (BA-0153).

3- Project to be implemented with unexpended funds from previously completed Surplus projects.

4- Expenditures will be used to fund additional improvements within the Larose to Golden Meadow alignment.

5- Represents supplemental funding to expedite implementation of Lafitte Tidal Protection projects (e.g., BA-0075-2).

6- Includes funds that may be used for West Bank and Vicinity (BA-0066), HSDRRS Mitigation- West Bank and Vicinity (BA-0109), HSDRRS Mitigation- Lake Pontchartrain and Vicinity (PO-0121), SELA (PO-0057), Permanent Closure of Canals and Pump Stations (PO-0060), LPV Task Force Guardian Mitigation- Bayou Sauvage (PO-0145), Previously Authorized Mitigation LPV- Manchac (PO-0146), Previously Authorized Mitigation- WBV (BA-0154), New Orleans to Venice (BA-0067), New Orleans to Venice Mitigation- Plaquemines Non-Fed (BA-0158), New Orleans to Venice Mitigation- Fed (BA-0159), and/or Plaquemines TFU Mitigation- Braithwaite to Scarsdale (BA-0156).

7- Expenditures will be used to supplement funding for CWPPRA projects (see Table 24).

8- Funds will be used to develop a coordinated strategy for implementing nonstructural projects identified in the Master Plan coastal communities. This may also include development of pilot projects in coastal parishes with high levels of risk and vulnerability.



Table 21. CWPPRA Monitoring Projected Expenditures

Project No.	Project Name	FY 2021	FY 2022	FY 2023	Project Total (FY 2021 - FY 2023)
BA-0003-C	Naomi Outfall Management	\$20,932	\$14,670	\$7,460	\$43,062
BA-0020	Jonathan Davis Wetland Protection	\$13,320	\$4,440	\$4,440	\$22,200
BA-0027-C	Barataria Landbridge Shoreline Protection (Phase 3)	\$13,320	\$4,440	\$9,176	\$26,936
BA-0034-2	Hydrologic Restoration and Vegetative Planting in the Des Allemands Swamp	\$86,280	\$63,320	\$63,320	\$212,920
BA-0035	Chaland Pass to Grand Bayou	\$4,440	\$13,320	\$13,320	\$31,080
BA-0036	Dedicated Dredging on the Barataria Basin Landbridge	\$4,440	\$4,440	\$13,320	\$22,200
BA-0037	Little Lake Shoreline Protection/Dedicated Dredging Near Round Lake	\$5,920	\$11,840	\$5,920	\$23,680
BA-0038	Barataria Barrier Island Complex Project: Pelican Island and Pass La Mer to Chaland Pass Restoration	\$4,440	\$4,440	\$13,320	\$22,200
BA-0039	Mississippi River Sediment Delivery (Bayou Dupont)	\$91,920	\$23,204	\$14,800	\$129,924
BA-0042	Lake Hermitage Marsh Creation	\$12,432	\$6,512	\$2,960	\$21,904
BA-0048	Bayou Dupont Marsh and Ridge Creation	\$25,182	\$2,960	\$2,960	\$31,102
BA-0068	Grand Liard Marsh and Ridge Restoration	\$30,300	\$4,440	\$29,400	\$64,140
BA-0125	Northwest Turtle Bay Marsh Creation	\$16,576	\$5,920	\$28,416	\$50,912
BA-0164	Bayou Dupont Sediment Delivery Marsh Creation #3	\$10,656	\$25,239	\$2,960	\$38,855
BA-0171	Caminada Headlands Back Barrier Marsh Creation	\$0	\$79,600	\$5,920	\$85,520
BS-0003-A	Caernarvon Diversion Outfall Management	\$14,208	\$2,960	\$0	\$17,168
BS-0011	Delta Management at Fort St. Philip	\$4,440	\$101,880	\$13,320	\$119,640
BS-0016	South Lake Lery Shoreline and Marsh Restoration	\$22,633	\$8,880	\$2,960	\$34,473
CS-0004-A	Cameron-Creole Maintenance	\$75,776	\$61,568	\$61,568	\$198,912
CS-0011-B	Sweet Lake/Willow Lake Hydrologic Restoration	\$19,536	\$19,536	\$0	\$39,072
CS-0021	Highway 384 Hydrologic Restoration	\$2,960	\$0	\$0	\$2,960
CS-0023	Replace Sabine Refuge Water Control Structures at Headquarters Canal, West Cove Canal, and Hog Island Gully	\$19,536	\$2,960	\$2,960	\$25,456
CS-0027	Black Bayou Hydrologic Restoration	\$4,144	\$17,168	\$17,168	\$38,480
CS-0028-3	Sabine Refuge Marsh Creation, Increment 3	\$17,168	\$17,168	\$2,960	\$37,296
CS-0028-4	Sabine Refuge Marsh Creation, Increment 4	\$17,168	\$17,168	\$2,960	\$37,296
CS-0029	Black Bayou Culverts Hydrologic Restoration	\$17,168	\$2,960	\$17,168	\$37,296
CS-0030	GIWW - Perry Ridge West Bank Stabilization	\$20,424	\$17,168	\$2,960	\$40,552
CS-0031	Holly Beach Sand Management	\$2,960	\$2,960	\$2,960	\$8,880
CS-0032	East Sabine Lake Hydrologic Restoration	\$12,432	\$12,432	\$2,960	\$27,824
CS-0054	Cameron-Creole Watershed Grand Bayou Marsh Creation	\$2,960	\$2,960	\$15,984	\$21,904
CS-0059	Oyster Bayou Marsh Creation & Terracing	\$37,443	\$37,443	\$37,443	\$112,330
CS-0066	Cameron Meadows Marsh Creation and Terracing	\$0	\$2,960	\$2,960	\$5,920
CS-0078	No Name Bayou Marsh Creation	\$0	\$2,960	\$2,960	\$5,920
LA-0003-B	Coastwide Nutria Control Plan	\$150,000	\$151,349	\$155,890	\$457,239
LA-0039	Coastwide Plantings Program	\$136,068	\$112,388	\$98,180	\$346,636
LA-0284	Coastwide Salvinia Weevil Propagation Facility	\$42,670	\$42,670	\$42,670	\$128,010
ME-0004	Freshwater Bayou Wetland (Phases 1 & 2)	\$17,168	\$17,168	\$2,960	\$37,296
ME-0011	Humble Canal Hydrologic Restoration	\$17,091	\$14,960	\$14,960	\$47,011
ME-0013	Freshwater Bayou Bank Stabilization	\$9,676	\$9,676	\$2,960	\$22,312
ME-0014	Pecan Island Terracing	\$23,088	\$17,168	\$2,960	\$43,216
ME-0016	Freshwater Introduction South of Highway 82	\$29,299	\$15,091	\$17,091	\$61,482
ME-0018	Rockefeller Refuge Gulf Shoreline Stabilization	\$76,840	\$76,840	\$95,784	\$249,464
ME-0019	Grand-White Lakes Landbridge Protection	\$9,380	\$24,272	\$17,168	\$50,820
ME-0020	South Grand Chenier Hydrologic Restoration Project	\$2,960	\$2,960	\$2,960	\$8,880
ME-0022	South White Lake Shoreline Protection	\$33,744	\$21,904	\$2,960	\$58,608
MR-0003	West Bay Sediment Diversion	\$224,977	\$14,800	\$10,064	\$249,841
MR-0009	Delta-Wide Crevasses	\$4,736	\$4,736	\$4,736	\$14,208
PO-0006	Fritchie Marsh Restoration	\$4,440	\$2,960	\$4,440	\$11,840
PO-0018	Bayou Sauvage National Wildlife Refuge Hydrologic Restoration, Phase 2	\$1,184	\$1,184	\$1,184	\$3,552
PO-0022	Bayou Chevee Shoreline Protection	\$10,656	\$5,920	\$0	\$16,576
PO-0024	Hopedale Hydrologic Restoration	\$2,960	\$2,960	\$0	\$5,920
PO-0033	Goose Point/Point Platte Marsh Creation	\$8,880	\$2,960	\$2,960	\$14,800
PO-0104	Bayou Bonfouca Marsh Creation	\$2,960	\$77,878	\$2,960	\$83,798
PO-0169	New Orleans Landbridge Shoreline Stabilization and Marsh Creation	\$4,440	\$87,920	\$4,440	\$96,800
TE-0034	Penchant Basin Natural Resources Plan, Increment 1	\$14,800	\$11,840	\$11,840	\$38,480
TE-0037	New Cut Dune/Marsh Restoration	\$11,840	\$5,920	\$11,840	\$29,600
TE-0040	Timbalier Island Dune/Marsh Restoration	\$29,600	\$5,920	\$0	\$35,520
TE-0044	North Lake Mechant Landbridge Restoration	\$5,920	\$5,920	\$28,416	\$40,256
TE-0046	West Lake Boudreaux Shoreline Protection and Marsh Creation	\$23,680	\$8,880	\$4,144	\$36,704
TE-0048	Raccoon Island Shoreline Protection/Marsh Creation	\$8,880	\$65,920	\$85,920	\$160,720
TE-0050	Whiskey Island Back Barrier Marsh Creation	\$63,680	\$4,736	\$21,312	\$89,728
TE-0052	West Belle Pass Barrier Headland Restoration	\$22,760	\$5,920	\$5,920	\$34,600
TE-0072	Lost Lake Marsh Creation and Hydrologic Restoration	\$11,840	\$11,840	\$61,840	\$85,520
TE-0138	Bayou DeCade Ridge and Marsh Creation	\$14,800	\$14,800	\$14,800	\$44,400
TV-0013-A	Oaks/Avery Canal Hydrologic Restoration, Increment 1	\$17,168	\$2,960	\$2,960	\$23,088
TV-0014	Marsh Island Hydrologic Restoration	\$17,168	\$2,960	\$0	\$20,128
TV-0015	Sediment Trapping at "The Jaws"	\$25,456	\$19,536	\$19,536	\$64,528
TV-0017	Lake Portage Land Bridge	\$2,960	\$2,960	\$2,960	\$8,880
TV-0018	Four Mile Canal Terracing and Sediment Trapping	\$8,880	\$11,840	\$19,536	\$40,256
TV-0021	East Marsh Island Marsh Creation	\$38,943	\$43,679	\$40,719	\$123,342
TV-0063	Coles Bayou Marsh Restoration	\$15,024	\$29,232	\$29,232	\$73,488
QRMS	Coastwide Reference Monitoring System	\$8,624,681	\$10,941,176	\$9,066,152	\$28,632,009
Total Expenditures		\$10,402,412	\$12,503,720	\$10,321,438	\$33,227,569
Federal CWPPRA Monitoring Expenditures		\$8,842,050	\$10,628,162	\$8,773,222	\$28,243,434
Trust Fund CWPPRA Monitoring Expenditures		\$1,560,362	\$1,875,558	\$1,548,216	\$4,984,135

Annual Plan

Projected Project Expenditures

Table 22. Projected Expenditures for Monitoring of WRDA Projects

Project ID	Project Name	FY 2021	FY 2022	FY 2023	Project Total (FY 2021 - FY 2023)
BA-0001	Davis Pond Freshwater Diversion	\$642,464	\$658,526	\$674,988	\$1,975,978
BS-0008	Caernarvon Freshwater Diversion	\$475,003	\$486,878	\$499,050	\$1,460,931
Total Expenditures (GOMESA)¹		\$1,117,467	\$1,145,404	\$1,174,038	\$3,436,909

Notes:

1- Monitoring expenditures of WRDA projects are subject to a 75% federal/25% state cost share. At present, CPRA is funding its 25% cost share of monitoring costs with GOMESA funds, and will seek reimbursement from the USACE for the 75% federal match.

Table 23. Projected Expenditures for Monitoring of Other Projects

Project ID	Project Name	FY 2021	FY 2022	FY 2023	Project Total (FY 2021 - FY 2023)
Berm to Barrier Projects¹					
BA-0040	Riverine Sand Mining/Scofield Island Restoration	\$84,286	\$5,920	\$104,126	\$194,332
BA-0110	Shell Island East	\$10,360	\$10,360	\$4,440	\$25,160
NFWF Projects					
BA-0143	Caminada Headland Beach and Dune Restoration Increment 2	\$335,520	\$351,312	\$351,312	\$1,038,144
TE-0143	Terrebonne Basin Barrier Island	\$193,680	\$481,253	\$310,925	
NRDA Projects					
BA-0111	Shell Island West	\$125,000	\$95,000	\$60,000	\$280,000
BA-0141	NRDA Lake Hermitage Marsh Creation Increment 2	\$164,000	\$59,200	\$0	\$223,200
BA-0142	NRDA Cheniere Ronquille	\$115,000	\$75,000	\$40,000	\$230,000
BA-0197	West Grand Terre Beach Nourishment and Stabilization	\$0	\$0	\$100,000	\$100,000
BA-0202	Queen Bess Island Restoration	\$145,000	\$115,000	\$115,000	\$375,000
BA-0203	Barataria Basin Ridge and Marsh Creation - Spanish Pass Increment	\$0	\$0	\$100,000	\$100,000
BA-0240	Bayou Grande Chenier Marsh and Ridge Restoration	\$0	\$0	\$90,046	\$90,046
TE-0100	NRDA Caillou Lake Headlands	\$360,000	\$265,000	\$180,000	\$805,000
Surplus Projects²					
BA-0045	Caminada Headland Restoration	\$17,620	\$96,312	\$86,840	\$200,772
USACE Mitigation Projects					
BA-0109	HSDRRS Mitigation - WBV	\$14,800	\$14,800	\$17,760	\$47,360
BA-0154	Previously Authorized Mitigation - WBV	\$11,840	\$11,840	\$14,800	\$38,480
BA-0158	New Orleans to Venice Mitigation - Plaquemines Non-Federal	\$7,400	\$7,400	\$7,400	\$22,200
BA-0159	New Orleans to Venice Mitigation - Federal	\$7,400	\$7,400	\$7,400	\$22,200
PO-0038-SF	MRGO Closure Structure	\$0	\$0	\$0	\$0
PO-0093	MRGO - Lake Borgne -Bayou Dupre Segment	\$0	\$0	\$0	\$0
PO-0094	MRGO - Lake Borgne -Bayou Bienvenue Segment	\$0	\$0	\$0	\$0
PO-0095	MRGO - Lake Borgne -Shell Beach Segment	\$0	\$0	\$0	\$0
PO-0121	HSDRRS Mitigation - LPV	\$7,400	\$7,400	\$7,400	\$22,200
PO-0145	LPV Task Force Guardian Mitigation - Bayou Sauvage	\$37,760	\$7,400	\$7,400	\$52,560
PO-0146	LPV Mitigation Project, Manchac WMA Marsh Creation	\$7,400	\$7,400	\$7,400	\$22,200
LOSCO Projects					
BA-0196	LOSCO- EML	\$44,864	\$36,840	\$36,840	\$118,544
LA-0278	General Oil Spill- LOSCO	\$31,840	\$31,840	\$31,840	\$95,520
LA-0283	Multiple Oil Spill- LOSCO	\$44,864	\$44,864	\$44,864	\$134,592
State-Only Projects					
PO-0142	Hydrologic Restoration of the Amite River Diversion Canal	\$57,838	\$60,837	\$34,570	\$153,245
PO-0148	Living Shoreline	\$83,162	\$2,960	\$33,193	\$119,315
PO-0152	Lake Borgne and MRGO Shoreline Protection	\$0	\$0	\$0	\$0
Total Expenditures		\$1,907,034	\$1,795,338	\$1,793,556	\$4,390,755
NFWF Expenditures (See Table 28)		\$529,200	\$351,312	\$351,312	\$1,231,824
NRDA Expenditures (See Table 28)		\$909,000	\$609,200	\$685,046	\$2,203,246
Surplus Expenditures (See Table 20)		\$17,620	\$96,312	\$86,840	\$200,772
LOSCO Expenditures		\$121,568	\$113,544	\$113,544	\$348,656
Trust Fund Expenditures		\$329,646	\$624,970	\$556,814	\$1,511,430

Notes:

1- Monitoring expenditures funded with remaining Berm to Barrier funds (included in Trust Fund Carry Forward in Table 12).

2- Monitoring expenditures funded with Surplus funds (see Table 20).



Table 24. CWPPRA Projects with O&M Budget Project Expenditures^{1,2,3}

Project No.	Project Name	FY 2021	FY 2022	FY 2023	Project Total (FY 2021 - FY 2023)
BA-0002	GIWW (Gulf Intracoastal Waterway) to Clovelly Hydrologic Restoration	\$447,652	\$0	\$0	\$447,652
BA-0003-C	Naomi Outfall Management	\$22,869	\$23,470	\$0	\$46,339
BA-0020	Jonathan Davis Wetland Protection	\$6,808	\$6,986	\$113,593	\$127,387
BA-0023	Barataria Bay Waterway West Side Shoreline Protection	\$30,000	\$0	\$0	\$30,000
BA-0026	Barataria Bay Waterway East Side Shoreline Protection	\$44,578	\$4,736	\$0	\$49,314
BA-0027	Barataria Basin Landbridge Shoreline Protection, Phases 1 and 2	\$28,000	\$3,552	\$4,736	\$36,288
BA-0027-C	Barataria Basin Landbridge Shoreline Protection, Phase 3	\$28,000	\$3,552	\$4,736	\$36,288
BA-0027-D	Barataria Basin Landbridge Shoreline Protection Phase 4	\$128,640	\$3,552	\$4,736	\$136,928
BA-0034-2	Hydrologic Restoration and Vegetative Plantings in the des Allemands Swamp	\$27,104	\$4,736	\$4,736	\$36,576
BA-0035	Pass Chalard to Grand Bayou Pass Barrier Shoreline Restoration	\$5,032	\$5,150	\$5,210	\$15,392
BA-0037	Little Lake Shoreline Protection/ Dedicated Dredging Near Round Lake	\$5,920	\$4,736	\$4,736	\$15,392
BA-0038	Pelican Island and Pass La Mer to Chalard Pass Restoration	\$5,506	\$154,120	\$5,683	\$165,308
BA-0039	Bayou Dupont Sediment Delivery System	\$1,066	\$1,066	\$3,907	\$6,038
BA-0041	South Shore of the Pen Shoreline Protection and Marsh Creation	\$3,552	\$26,226	\$3,670	\$33,449
BA-0042	Lake Hermitage Marsh Creation	\$3,789	\$3,907	\$3,907	\$11,603
BA-0048	Bayou Dupont Marsh and Ridge Creation	\$6,867	\$6,986	\$7,104	\$20,957
BA-0068	Grand Liard Marsh and Ridge Restoration	\$6,867	\$7,045	\$7,104	\$21,016
BA-0125	Northwest Turtle Bay Marsh Creation	\$ 135,920	\$ 5,920	\$ 5,920	\$147,760
BA-0164	Bayou Dupont Sediment Delivery- Marsh Creation 3	\$3,730	\$77,191	\$3,848	\$84,769
BA-0171	Caminada Headland Back Barrier Marsh Creation	\$5,920	\$5,920	\$5,920	\$17,760
BA-0173	Bayou Grande Chenier Marsh and Ridge Restoration	\$0	\$0	\$21,554	\$21,554
BS-0003-A	Caernarvon Diversion Outfall Management	\$47,528	\$86,186	\$86,186	\$219,900
BS-0011	Delta Management at Fort St. Philip	\$6,216	\$6,453	\$6,630	\$19,299
BS-0016	South Lake Lery Shoreline and Marsh Restoration	\$104,920	\$362,170	\$5,920	\$473,010
CS-0004-A	Cameron-Creole Maintenance	\$254,600	\$254,600	\$254,600	\$763,800
CS-0011-B	Sweet Lake/Willow Lake Hydrologic Restoration	\$4,736	\$4,736	\$4,736	\$14,208
CS-0023	Replace Sabine Refuge Water Control Structures at Headquarters Canal, West Cove Canal, and Hog Island Gully	\$54,736	\$54,736	\$54,736	\$164,208
CS-0024	Perry Ridge Shore Protection	\$4,736	\$0	\$0	\$4,736
CS-0027	Black Bayou Hydrologic Restoration	\$14,440	\$14,736	\$14,736	\$43,912
CS-0028-2	Sabine Refuge Marsh Creation, Increment 2	\$438,880	\$438,880	\$438,880	\$1,316,640
CS-0028-4-5	Sabine Refuge Marsh Creation, Increments 4 & 5	\$78,880	\$8,880	\$8,880	\$96,640
CS-0029	Black Bayou Culverts Hydrologic Restoration	\$51,840	\$51,840	\$51,840	\$155,520
CS-0030	GIWW - Perry Ridge West Bank Stabilization	\$4,736	\$4,736	\$4,736	\$14,208
CS-0031	Holly Beach Sand Management	\$64,440	\$4,736	\$4,736	\$73,912
CS-0032	East Sabine Lake Hydrologic Restoration	\$138,880	\$5,328	\$5,328	\$149,536
CS-0049	Cameron-Creole Freshwater Introduction - Vegetative Plantings	\$54,736	\$54,736	\$54,736	\$164,208
CS-0054	Cameron-Creole Watershed Grand Bayou Marsh Creation	\$9,472	\$67,863	\$141,840	\$219,175
CS-0059	Oyster Bayou Marsh Creation & Terracing	\$101,840	\$4,736	\$101,840	\$208,416
CS-0066	Cameron Meadows Marsh Creation and Terracing	\$4,440	\$ 4,440	\$ 4,736	\$13,616
LA-0003-B	Coastwide Nutria Control Program	\$3,230,920	\$3,113,406	\$3,134,631	\$9,478,957
LA-0039	Coastwide Plantings Program	\$44,128	\$0	\$0	\$44,128
LA-0284	Coastwide Salvinia Weevil Propagation Facility	\$102,670	\$102,670	\$102,670	\$308,010
ME-0004	Freshwater Bayou Wetland (Phases 1 & 2)	\$4,736	\$4,736	\$4,736	\$14,208
ME-0011	Humble Canal Hydrologic Restoration	\$284,736	\$19,736	\$19,736	\$324,208
ME-0013	Freshwater Bayou Bank Stabilization	\$4,736	\$4,736	\$4,736	\$14,208
ME-0014	Pecan Island Terracing	\$4,736	\$4,736	\$4,736	\$14,208
ME-0016	Freshwater Introduction South of Highway 82	\$14,736	\$14,736	\$14,736	\$44,208
ME-0018	Rockefeller Refuge Gulf Shoreline Stabilization	\$4,440	\$4,736	\$4,736	\$13,912
ME-0019	Grand-White Lakes Landbridge Protection	\$454,736	\$4,736	\$4,736	\$464,208
ME-0020	South Grand Chenier Hydrologic Restoration Project	\$4,440	\$4,736	\$4,736	\$13,912
ME-0021	Grand Lake Shoreline Protection (CIAP + Tebo Point)	\$14,736	\$14,736	\$14,736	\$44,208
ME-0022	South White Lake Shoreline Protection	\$4,440	\$4,736	\$4,736	\$13,912
MR-0009	Delta Wide Crevasses	\$1,017,760	\$5,920	\$5,920	\$1,029,600
PO-0006	Fritchie Marsh Restoration	\$4,795	\$0	\$0	\$4,795
PO-0016	Bayou Sauvage National Wildlife Refuge Hydrologic Restoration, Phase 1	\$1,480	\$4,203	\$0	\$5,683
PO-0018	Bayou Sauvage National Wildlife Refuge Hydrologic Restoration, Phase 2	\$1,480	\$1,480	\$4,144	\$7,104
PO-0022	Bayou Chevee Shoreline Protection	\$26,226	\$934,583	\$0	\$960,809
PO-0024	Hopedale Hydrologic Restoration	\$10,762	\$10,821	\$10,821	\$32,403
PO-0030	Lake Borgne Shoreline Protection	\$1,026,640	\$5,920	\$5,920	\$1,038,480
PO-0033	Goose Point/Point Platte Marsh Creation	\$117,760	\$4,144	\$4,144	\$126,048
PO-0075	Labranche East Marsh Creation	\$4,144	\$4,144	\$4,144	\$12,432
PO-0104	Bayou Bonfouca Marsh Creation Project	\$20,422	\$0	\$0	\$20,422
PO-0133	Labranche Central Marsh Creation	\$4,144	\$4,144	\$4,144	\$12,432
PO-0169	New Orleans Landbridge Shoreline Stabilization and Marsh Creation	\$2,960	\$4,440	\$4,440	\$11,840
TE-0028	Brady Canal Hydrologic Rest.	\$561,840	\$0	\$0	\$561,840
TE-0034	Penchant Basin Natural Resources Plan Increment 1	\$124,840	\$4,736	\$4,736	\$134,312
TE-0037	New Cut Dune and Marsh Restoration	\$8,920	\$7,736	\$7,736	\$24,392
TE-0039	South Lake Decade Freshwater Introduction	\$4,736	\$4,736	\$4,736	\$14,208
TE-0040	Timbalier Island Dune and Marsh Restoration	\$150,000	\$7,736	\$7,736	\$165,472
TE-0043	GIWW Bank Restoration of Critical Areas in Terrebonne	\$400,000	\$9,736	\$4,736	\$414,472
TE-0044	North Lake Mechant Landbridge Restoration	\$1,785,520	\$4,736	\$4,736	\$1,794,992
TE-0045	Terrebonne Bay Shore Protection Demonstration	\$490,260	\$0	\$0	\$490,260
TE-0046	West Lake Boudreaux Shoreline Protection and Marsh Creation	\$4,736	\$4,736	\$4,736	\$14,208
TE-0048	Raccoon Island Shoreline Protection/Marsh Creation	\$90,000	\$4,736	\$4,736	\$99,472
TE-0050	Whiskey Island Back Barrier Marsh Creation	\$211,840	\$14,840	\$7,736	\$234,416
TE-0052	West Belle Pass Barrier Headland Restoration	\$4,736	\$4,736	\$4,736	\$14,208
TE-0072	Lost Lake Marsh Creation and Hydrologic Restoration	\$89,800	\$83,880	\$83,880	\$257,560
TE-0138	Bayou DeCade Ridge and Marsh Creation	\$198,680	\$5,920	\$5,920	\$210,520
TV-0004	Cote Blanche Hydrologic Restoration	\$21,840	\$21,840	\$21,840	\$65,520
TV-0012	Little Vermilion Bay Sediment Trapping	\$55,920	\$4,736	\$4,736	\$65,392
TV-0013-A	Oaks/Avery Canal Hydrologic Restoration, Increment 1	\$4,440	\$4,736	\$4,736	\$13,912
TV-0014	Marsh Island Hydrologic Restoration	\$4,440	\$4,736	\$4,736	\$13,912

Annual Plan

Projected Project Expenditures

Table 24. CWPPRA Projects with O&M Budget Project Expenditures^{1,2,3}

Project No.	Project Name	FY 2021	FY 2022	FY 2023	Project Total (FY 2021 - FY 2023)
TV-0015	Sediment Trapping at "The Jaws"	\$55,920	\$4,736	\$4,736	\$65,392
TV-0017	Lake Portage Land Bridge	\$4,440	\$4,736	\$4,736	\$13,912
TV-0018	Four Mile Canal Terracing and Sediment Trapping	\$114,440	\$4,736	\$4,736	\$123,912
TV-0021	East Marsh Island Marsh Creation	\$74,736	\$4,736	\$4,736	\$84,208
TV-0063	Coles Bayou Marsh Restoration	\$9,472	\$4,736	\$141,840	\$156,048
TOTAL CWPPRA O&M Expenditures		\$13,272,193	\$6,274,869	\$5,162,527	\$24,709,590
Federal CWPPRA O&M Expenditures		\$10,897,853	\$5,333,639	\$4,388,148	\$20,619,641
Surplus CWPPRA O&M Expenditures (See Table 20)		\$451,189	\$0	\$0	\$451,189
State CWPPRA O&M Expenditures		\$1,923,151	\$941,230	\$774,379	\$3,638,760

Notes:

1. Table shows all approved CWPPRA projects. Demonstration and vegetative planting projects are not shown as they have no O&M budgets. Other projects without O&M budgets have "None" entered in the budget columns. Projects not scheduled to complete within a given year have "Not Constructed" entered in the budget column(s).
2. State share is based on CWPPRA cost share of 85% Federal/15% State except for PPL 5-6 projects, which have a 90% Federal/10% State cost share.
3. Projects that the USACE is responsible for O&M are indicated by (USACE) after the project number.

Table 25. O&M Projected Expenditures for CWPPRA Projects without Federal Cost Share

Project ID	Project Name	FY 2021	FY 2022	FY 2023	Project Total (FY 2021 - FY 2023)
TE-0020	Isles Dernieres Restoration East Island	\$7,736	\$7,736	\$7,736	\$23,208
TE-0024	Isles Dernieres Restoration Trinity Island	\$7,736	\$7,736	\$7,736	\$23,208
TE-0025	East Timbalier Island Sediment Restoration, Phase 1	\$7,736	\$4,736	\$4,736	\$17,208
TE-0027	Whiskey Island Restoration	\$7,736	\$7,736	\$7,736	\$23,208
TE-0030	East Timbalier Island Sediment Restoration, Phase 2	\$7,736	\$4,736	\$4,736	\$17,208
Total Expenditures		\$38,680	\$32,680	\$32,680	\$104,040

Table 26. Projected Expenditures for O&M of WRDA Projects

Project ID	Project Name	FY 2021	FY 2022	FY 2023	Project Total (FY 2021 - FY 2023)
BA-0001	Davis Pond Freshwater Diversion	\$1,132,979	\$1,128,608	\$863,664	\$3,125,251
BS-0008	Caernarvon Freshwater Diversion	\$148,664	\$148,664	\$148,664	\$445,992
Total Expenditures (GOMESA)¹		\$1,281,643	\$1,277,272	\$1,012,328	\$3,571,243

Notes:

- 1- O&M expenditures of WRDA projects are subject to a 75% federal/25% state cost share. At present, CPRA is funding its 25% cost share of O&M costs with GOMESA funds, and will seek reimbursement from the USACE for the 75% federal match.



Table 27. Projected Expenditures for O&M of Other Projects

Project ID	Project Name	FY 2021	FY 2022	FY 2023	Project Total (FY 2021 - FY 2023)
Hurricane Protection Projects					
BA-0066	West Bank and Vicinity ¹	\$506,122	\$516,308	\$450,354	\$1,472,784
BA-0067	New Orleans and Vicinity ¹	\$270,736	\$221,282	\$320,310	\$812,328
LA-0154	FEMA LAMP ¹	\$144,294	\$115,548	\$100,000	\$359,842
LA-0206	HSDRRS Armoring ¹	\$168,272	\$189,440	\$203,826	\$561,538
LA-0253	Flood Protection Inspections ¹	\$253,251	\$279,791	\$293,781	\$826,823
LA-0269	CPRA Letter of No Objection	\$485,888	\$535,692	\$562,476	\$1,584,056
LA-0271	O&M Division State Wide Levee Board Meetings	\$123,901	\$130,097	\$136,601	\$390,599
PO-0057	SELA- Overall ¹	\$162,515	\$119,641	\$110,155	\$392,311
PO-0060	Permanent Canal Closures and Pump Stations ¹	\$297,178	\$202,036	\$45,350	\$544,564
PO-0063	Lake Pontchartrain and Vicinity ¹	\$471,909	\$449,382	\$393,783	\$1,315,074
USACE Mitigation Projects					
BA-0109	HSDRRS Mitigation - WBV	\$18,944	\$18,944	\$18,944	\$56,832
BA-0154	Previously Authorized Mitigation - WBV	\$18,944	\$18,944	\$18,944	\$56,832
BA-0158	New Orleans to Venice Mitigation - Plaquemines Non-Federal	\$7,104	\$7,104	\$7,104	\$21,312
BA-0159	New Orleans to Venice Mitigation - Federal	\$7,104	\$7,104	\$7,104	\$21,312
PO-0038SF	MRGO Closure Structure	\$62,080	\$62,080	\$62,080	\$186,240
PO-0093	MRGO - Lake Borgne -Bayou Dupre Segment	\$7,992	\$7,992	\$7,992	\$23,976
PO-0094	MRGO - Lake Borgne -Bayou Bienvenue Segment	\$7,992	\$7,992	\$7,992	\$23,976
PO-0095	MRGO - Lake Borgne -Shell Beach Segment	\$7,992	\$7,992	\$7,992	\$23,976
PO-0121	HSDRRS Mitigation - LPV	\$39,862	\$39,862	\$39,362	\$119,085
PO-0145	LPV Task Force Guardian Mitigation - Bayou Sauvage	\$18,944	\$18,944	\$18,944	\$56,832
PO-0146	LPV Mitigation Project, Manchac WMA Marsh Creation	\$18,944	\$13,287	\$13,287	\$45,518
PO-0152	Lake Borgne and MRGO Shoreline Protection	\$7,992	\$7,992	\$7,992	\$23,976
NFWF Projects					
BA-0143	Caminada Headland Beach and Dune Restoration INCR 2	\$244,680	\$103,680	\$261,680	\$610,040
TE-0143	Terrebonne Basin Barrier Island	\$5,920	\$5,920	\$5,920	\$17,760
NRDA Projects					
BA-0111	Shell Island West - NRDA	\$391,360	\$125,500	\$55,500	\$572,360
BA-0142	NRDA Cheniere Ronquille Barrier Island Restoration	\$313,500	\$198,500	\$55,500	\$567,500
BA-0202	Queen Bess Island Restoration	\$667,000	\$300,000	\$300,000	\$1,267,000
BA-0203	Barataria Basin Ridge and Marsh Restoration- Spanish Pass Increment	\$764,476	\$1,000,000	\$0	\$1,764,476
CS-0080	Rabbit Island Restoration	\$971,640	\$84,880	\$337,684	\$1,394,204
PO-0180	Lake Borgne Marsh Creation- Increment 1	\$0	\$0	\$14,370	\$14,370
TE-0100	NRDA Caillou Lake Headlands	\$855,500	\$730,500	\$55,500	\$1,641,500
State-Only Projects					
BA-0003	Naomi Siphon	\$12,340	\$12,340	\$12,340	\$37,020
BA-0004	West Point a la Hache Siphon	\$12,340	\$12,340	\$12,340	\$37,020
BA-0005	Fort Livingston	\$91,020	\$35,496	\$12,236	\$138,752
CS-0002	Rycade Canal	\$32,104	\$0	\$0	\$32,104
LA-0013	Coastal Forest Conservation Initiative				\$0
LA-0099	Public Outreach and Field Trips	\$20,128	\$20,128	\$20,128	\$60,384
LA-0273	Gulf Coast Joint Venture and Partnerships	\$8,688	\$8,688	\$8,688	\$26,064
ME-0001	Pecan Island Structure	\$19,736	\$19,736	\$19,736	\$59,208
PO-0001	Violet Siphon	\$328,283	\$25,840	\$25,840	\$379,963
PO-0036	Orleans Landbridge	\$7,104	\$7,104	\$7,104	\$21,312
PO-0072	Biloxi Marsh	\$40,357	\$40,357	\$40,357	\$121,070
PO-0142	Hydrologic Restoration of the Amite River Diversion Canal	\$13,287	\$13,287	\$13,287	\$39,862
PO-0148	Living Shoreline	\$33,748	\$33,748	\$33,748	\$101,244
TE-0001	Montegut Wetlands	\$0	\$0	\$0	\$0
TE-0003	Bayou LaCache Wetlands	\$2,002,960	\$0	\$158,880	\$2,161,840
TV-0072	Quintana Canal	\$14,440	\$14,736	\$14,736	\$43,912
TV-0013-B	Avery Canal	\$14,440	\$14,736	\$14,736	\$43,912
N/A	Maintenance Surveys	\$33,744	\$33,744	\$33,744	\$101,232
N/A	GPS Network (continued development and maintenance)	\$83,288	\$83,288	\$83,288	\$249,864
Total Expenditures		\$10,090,043	\$5,902,002	\$4,431,715	\$20,423,759
NFWF Expenditures (See Table 28)		\$250,600	\$109,600	\$267,600	\$627,800
NRDA Expenditures (See Table 28)		\$3,963,476	\$2,439,380	\$818,554	\$7,221,410
Surplus Expenditures (See Table 20)		\$1,438,200	\$1,020,220	\$1,098,425	\$3,556,845
Trust Fund Expenditures		\$4,437,767	\$2,332,802	\$2,247,136	\$9,017,704

Notes:

1- Expenditures partially funded with Surplus funds (see Table 20).

Annual Plan

Projected Project Expenditures

Table 28. Oil Spill Projected Expenditures¹

Project ID	Project Name	FY 2021	FY 2022	FY 2023	Project Total (FY 2021 - FY 2023)
Deepwater Horizon NRDA					
AT-0019	Atchafalaya WMA Boat Launch	\$168,090	\$0	\$0	\$168,090
AT-0020	Atchafalaya WMA Campground Improvements	\$880,800	\$0	\$0	\$880,800
BA-0153	Mid-Barataria Sediment Diversion (Construction)	\$100,000	\$145,000,000	\$505,000,000	\$650,100,000
BA-0197	West Grand Terre Beach Nourishment and Stabilization	\$72,236,800	\$12,650,432	\$0	\$84,887,232
BA-0202	Queen Bess Island Restoration	\$14,800	\$0	\$0	\$14,800
BA-0203	Barataria Basin Ridge and Marsh Restoration-Spanish Pass Increment	\$50,766,600	\$50,766,600	\$0	\$101,533,200
BA-0207	Large-Scale Barataria Marsh Creation	\$100,000	\$100,000	\$100,000	\$300,000
BA-0213	Bayou Segnette State Park Improvements	\$1,542,259	\$0	\$0	\$1,542,259
BA-0214	Grand Isle State Park Improvements	\$3,008,880	\$0	\$0	\$3,008,880
BA-0240	Grand Cheniere Ridge Marsh Creation	\$16,800,000	\$38,500,000	\$0	\$55,300,000
CS-0080	Rabbit Island Restoration	\$8,571,794	\$0	\$0	\$8,571,794
ME-0036	Rockefeller Piers and Signage	\$54,301	\$0	\$0	\$54,301
MR-0169	Pass-a-Loutre Crevasses NRDA	\$115,684	\$0	\$0	\$115,684
MR-0170	Pass-a-Loutre Campgrounds NRDA	\$276,736	\$0	\$0	\$276,736
PO-0163	Golden Triangle Marsh Creation	\$35,011,600	\$6,988,400	\$0	\$42,000,000
PO-0174	Biloxi Marsh Living Shoreline	\$21,514,800	\$28,972,313	\$2,800,000	\$53,287,113
PO-0180	Lake Borgne Marsh Creation- Increment 1	\$76,138,640	\$45,000,000	\$0	\$121,138,640
PR-0001	Middle Pearl River WMA Boat Launch	\$518,000	\$0	\$0	\$518,000
TE-0139	Terrebonne Basin Ridge and Marsh Creation- Bayou Terrebonne Increment	\$2,500,000	\$40,200,000	\$40,000,000	\$82,700,000
TE-0144	Island Road Fishing Piers	\$0	\$0	\$0	\$0
TE-0146	Pointe-aux-Chenes WMA Enhancements	\$3,155,920	\$0	\$0	\$3,155,920
TV-0081	Cypremort Point State Park Improvements	\$3,359,480	\$414,555	\$0	\$3,774,035
N/A	NRDA Replenish and Protect Living Coastal and Marine Resources	\$18,063,000	\$21,000,000	\$122,000,000	\$161,063,000
N/A	NRDA Recreational Use 1 (External Lead) ²	\$6,480,000	\$945,000	\$945,000	\$8,370,000
N/A	NRDA Recreational Use 2 (External Lead) ²	\$6,901,159	\$0	\$0	\$6,901,159
N/A	NRDA Restoration Planning	\$2,596,474	\$2,075,403	\$1,854,911	\$6,526,788
N/A	NRDA Nutrient Reduction	\$3,000,000	\$3,000,000	\$3,000,000	\$9,000,000
N/A	Regionwide Trustee Implementation Group	\$1,000,000	\$1,000,000	\$1,000,000	\$3,000,000
N/A	NRDA Adaptive Management	\$11,215,125	\$8,846,431	\$6,682,690	\$26,744,246
N/A	NRDA OM&M (See Tables 22 and 26)	\$4,872,476	\$3,048,580	\$1,503,600	\$9,424,656
Total Deepwater Horizon NRDA Expenditures		\$350,963,418	\$408,507,714	\$684,886,201	\$1,444,357,333
NFWF Projects					
BA-0153	Mid-Barataria Sediment Diversion (E&D)	\$23,000,000	\$12,000,000	\$0	\$35,000,000
BS-0030	Mid-Breton Sediment Diversion	\$22,500,000	\$23,000,000	\$15,000,000	\$60,500,000
LA-0276	Sediment Diversion Management	\$3,000,000	\$2,000,000	\$1,500,000	\$6,500,000
TE-0110	Increase Atchafalaya Flow to Eastern Terrebonne Terrebonne Basin Barrier Island and Beach	\$3,750,000	\$3,750,000	\$3,000,000	\$10,500,000
TE-0143	Nourishment ³	\$103,707,874	\$34,647,081	\$0	\$138,354,955
N/A	NFWF Adaptive Management	\$6,350,000	\$4,989,785	\$4,114,516	\$15,454,301
N/A	NFWF OM&M (See Tables 22 and 26)	\$779,800	\$460,912	\$618,912	\$1,859,624
Total NFWF Expenditures		\$163,087,674	\$80,847,778	\$24,233,428	\$268,168,880
RESTORE Projects					
MR-0168	Lowermost Mississippi River Management Program	\$4,000,000	\$3,300,000	\$0	\$7,300,000
CS-0065	Calcasieu Ship Channel Salinity Control Measures	\$3,148,000	\$3,148,000	\$40,000,000	\$46,296,000
PO-0029	River Reintroduction into Maurepas Swamp	\$8,000,000	\$34,500,000	\$63,000,000	\$105,500,000
TE-0113	Houma Navigation Canal Lock Complex	\$30,000,000	\$110,000,000	\$140,000,000	\$280,000,000
N/A	RESTORE Adaptive Management	\$7,530,000	\$6,664,409	\$6,357,419	\$20,551,828
N/A	RESTORE Bucket 2 Planning Grants	\$500,000	\$300,000	\$300,000	\$1,100,000
N/A	Parish Matching Program- Projects ^{4,5}	\$10,000,000	\$5,000,000	\$0	\$15,000,000
N/A	Parish Matching Program- CPRA Costs	\$625,000	\$500,000	\$500,000	\$1,625,000
N/A	RESTORE Center of Excellence	\$1,950,000	\$1,850,000	\$1,850,000	\$5,650,000
Total RESTORE Expenditures		\$65,753,000	\$165,262,409	\$252,007,419	\$483,022,828
Total Oil Spill Expenditures		\$579,804,092	\$654,617,901	\$961,127,048	\$2,195,549,041

Notes:

1- Red font denotes projected expenditures for which funding has not yet been procured.

2- See Table 30 for list of projects.

3- Project will utilize funding initially approved for East Timbalier Island Restoration (TE-0118).

4- Expenditures represent potential matching funds for project implementation to eligible parishes identified in 33 U.S.C. §1321(t)(1)(D)(II) provided that the project constitutes an eligible activity under 31 C.F.R. §§ 34.201 and 34.203 and meets the purposes identified in La. R.S. 49:214.5.4(G) & (I).

5- See Table 31 for list of projects.



Table 29. GOMESA Projected Expenditures

Project ID	Project Name	FY 2021	FY 2022	FY 2023	Project Total (FY 2021 - FY 2023)
AT-0017	Bayou Chene Option 1	\$50,000,000	\$25,000,000	\$0	\$75,000,000
BA-0075-2	Rosethorne Basin Phase 1 & 2 (LAILD)	\$6,500,000	\$4,500,000	\$0	\$11,000,000
BA-0210	Grand Isle & Vicinity Beach Stabilization (GILD)	\$8,880	\$0	\$0	\$8,880
BA-0216	Magnolia Ridge Levee Lift and Road (St. Charles Parish)	\$500,000	\$0	\$0	\$500,000
BA-0218	Levee Improvements for Gheens Community (NLLD)	\$300,000	\$0	\$0	\$300,000
BA-0219	Davis Pond Upper Barataria Risk Reduction (LBLD)	\$285,199	\$5,335,520	\$0	\$5,620,719
BA-0221	Pumping Capacity Improvements Phase 1 (BLFWD)	\$3,832,000	\$3,831,108	\$3,830,922	\$11,494,030
BA-0222	NOV-NF Drainage Canal Relocation (Plaquemines Parish)	\$4,500,000	\$0	\$0	\$4,500,000
BA-0231	Storm Surge Risk Reduction for Reach E-North (SLLD)	\$1,125,000	\$0	\$0	\$1,125,000
BA-0232	Des Allemands FDA Pump Station Rehabilitation	\$250,000	\$0	\$0	\$250,000
PO-0062	West Shore Lake Pontchartrain (PLD)	\$4,500,000	\$0	\$0	\$4,500,000
PO-0184	St. Tammany Ring Levee (St. Tammany Parish)	\$100,000	\$3,000,000	\$3,000,000	\$6,100,000
TE-0147	Hollywood Canal Closure Structure (NLLD)	\$1,463,020	\$5,135,520	\$0	\$6,598,540
TE-0148	40 Arpent Canal Levee- Lockport Co. Canal to Butch Hill Station (NLLD)	\$5,240,000	\$0	\$0	\$5,240,000
TE-0151	Grand Bayou Floodgate	\$7,000,000	\$0	\$0	\$7,000,000
TE-0152	Storm Surge Risk Reduction for US-90 at Bayou Folse 100-yr Levee Lift; NOV-NF-W-4, Oakville to LaReusitte and MRL 179 (Plaquemines Parish)	\$850,000	\$0	\$0	\$850,000
Not Avail.	Goose Bayou (Penn Levee) (LAILD)	\$1,500,000	\$0	\$14,000,000	\$15,500,000
Not Avail.	T-Wall Kellog Pump Station (St. Charles Parish)	\$2,926,911	\$6,766,667	\$6,766,667	\$16,460,244
Not Avail.	Magnolia Ridge Levee Pipeline T-Wall (St. Charles Parish)	\$2,500,000	\$0	\$0	\$2,500,000
Not Avail.	Reach L Mitigation (SLLD)	\$2,000,000	\$1,500,000	\$0	\$3,500,000
Not Avail.	Storm Surge Risk Reduction for reach D-South Elevation to +18 ft (SLLD)	\$1,000,000	\$0	\$0	\$1,000,000
Not Avail.	Floodwall Improvement for reach D-South at Crawfish Farm (SLLD)	\$1,500,000	\$0	\$0	\$1,500,000
N/A	GOMESA CPRA Allocation	\$1,000,000	\$0	\$0	\$1,000,000
N/A	GOMESA OM&M- Diversions	\$2,100,000	\$2,100,000	\$3,000,000	\$7,200,000
N/A	GOMESA Adaptive Management (See Table 10)	\$7,399,110	\$12,422,676	\$4,843,220	\$24,665,006
N/A	Future GOMESA Projects (TBD) ¹	\$4,485,000	\$4,500,000	\$2,425,000	\$11,410,000
		\$0	\$4,300,000	\$121,687,951	\$125,987,951
Total Expenditures		\$112,865,120	\$78,391,491	\$159,553,760	\$350,810,371

Notes:

1- GOMESA funding in outlying years is contingent upon receipt of sufficient funding. Projects proposed to begin receiving funding in FY 2022-2023 include the following:

- Floodwall Improvement for Golden Meadow Pump Station (SLLD)- FY 2022
- Reach F Berm Improvement (SLLD)- FY 2022
- Sunset Levee Upper Barataria Risk Reduction (UBRR) (LBLD)- FY 2022
- HNC Lock Complex (TLCD)- FY 2023

Annual Plan

Addendum

Table 30: List of Approved NRDA Recreational Use Projects

Project ID	Project Name	Implementing Agency	Total Project Estimate
AT-0019	Atchafalaya Delta WMA Boat Access	CPRA	\$920,450
AT-0020	Atchafalaya Delta WMA Campgrounds	CPRA	\$3,248,000
BA-0213	Bayou Segnette State Park Improvements	State Parks	\$2,126,724
BA-0214	Grand Isle State Park Improvements	CPRA	\$6,126,967
ME-0036	Rockefeller Piers and Signage	CPRA	\$690,000
MR-0169	Pass a Loutre WMA Crevasse Access	CPRA	\$1,568,000
MR-0170	Pass a Loutre WMA Campgrounds	CPRA	\$1,624,000
PR-0001	Middle Pearl WMA Boat Launch	CPRA	\$575,000
TE-0144	Island Road Fishing Piers	CPRA	\$3,000,000
TE-0146	Pointe-aux-Chenes WMA Enhancements	CPRA	\$5,012,000
TV-0081	Cypremort Point State Park Improvements	CPRA	\$4,477,338
LA-0298	Statewide Artificial Reefs	LDWF	\$6,000,000
BA-0208	Elmer's Island Access	LDWF	\$6,000,000
CS-0084	Sam Houston Jones State Park Improvements	State Parks	\$2,425,250
BS-0036	St. Bernard State Park Improvements	State Parks	\$1,098,625
Not Avail.	Lake Charles Science Center	LDWF	\$7,000,000
Not Avail.	Chitimacha Boat Launch	Chitimacha Tribe	\$650,000
Not Avail.	WHARF Phase 1	City of Westwego	\$995,000
Not Avail.	The Wetlands Center	Town of Lafitte	\$2,000,000
Not Avail.	Jean Lafitte Improvements	DOI	\$1,284,062
Not Avail.	Des Allemands Boat Launch	St. Charles Parish	\$1,841,116
Not Avail.	Improvements to Grand Avoille Boat Launch	St. Mary's Parish	\$247,426
Not Avail.	Belle Chasse	Plaquemines	\$250,000

Table 31: List of Approved RESTORE Parish Matching Projects

Project ID	Project Name	Active Phase	Parish	Total Project Estimate
ME-0035	Rockefeller Shoreline Stabilization	CON	Cameron	\$6.67 M
TE-0145	Grand Bayou Freshwater Reintroduction	E&D	Lafourche	\$412,722
BS-0034	Lake Lery Marsh Creation	CON	St. Bernard	\$2.78 M
BA-0209	Paradis Canal Gate	CON	St. Charles	\$2.54 M
PO-0183	Manchac Landbridge Shoreline Protection	E&D, CON	Tangipahoa	\$3 M
TV-0079	Freshwater Bayou Canal Shoreline Protection	E&D, CON	Vermilion	\$4.59 M



List of Acronymns

Acronymn	Full Name
BERM	Berm to Barrier
BIMP	Barrier Island Maintenance Program
BLFWD	Bayou Lafourche Freshwater District
BP	British Petroleum
CDBG	Community Development Block Grant
CIAP	Coastal Impact Assistance Program
CON	Construction
CPR	Coastal Protection and Restoration (Trust Fund)
CPRA	Coastal Protection and Restoration Authority
CRMS	Coastwide Reference Monitoring System
CWPPRA	Coastal Wetlands Planning, Protection and Restoration Act
DOI	Department of the Interior
DOTD	Department of Transportation and Development
DWH	Deepwater Horizon
E&D	Engineering and Design
EIS	Environmental Impact Statement
E-North	SLLD Levee reach
EPA	Environmental Protection Agency
E-South	SLLD Levee reach
FEMA	Federal Emergency Management Agency
FQ	Fiscal Quarter
FY	Fiscal Year
GIILD	Grand Isle Independent Levee District
GIWW	Gulf Intracoastal Waterway
GOMESA	Gulf of Mexico Energy Security Act
GPS	Global Positioning System
HDDA	Hopper Dredge Disposal Area
HSDRRS	Greater New Orleans Hurricane and Storm Damage Risk Reduction System
HUD	United States Department of Housing and Urban Development
JBE	John Bel Edwards
LAILD	Lafourche Area Independent Levee District
LAMP	Louisiana Mapping Program
LBLD	Lake Borgne Levee District
LCA	Louisiana Coastal Area
LDWF	Louisiana Department of Wildlife and Fisheries
LERRDS	Land, Easements, Rights of Way, Relocation, and Disposal Sites
LF	Linear Feet

Acronymn	Full Name
LOSCO	Louisiana Oil Spill Coordinator's Office
LPV	Lake Pontchartrain & Vicinity
MOEX	Mitsui Oil Exploration
MRGO	Mississippi River Gulf Outlet
NFWF	National Fish and Wildlife Foundation
NLLD	North Lafourche Levee District
NOAA	National Oceanic and Atmospheric Administration
NOV-NF	New Orleans to Venice – Non-Federal
NRCS	National Resource Conservation Service
NRDA	Natural Resource Damage Assessment
O&M	Operations and Maintenance
OCM	Office of Coastal Management
OCPR	Office of Coastal Protection and Restoration
OM&M	Operations, Maintenance and Monitoring
OTS	Office of Technology Services
PLD	Pontchartrain Levee District
PLN	Planning
PPL	Priority Project List
PROG	Program
R.S.	Revised Statute
RESTORE	Resources and Ecosystems Sustainability, Tourist Opportunities, and Revived Economies
SELA	Southeast Louisiana
SLLD	South Lafourche Levee District
SPER	Shoreline Protection Emergency Restoration
SSPM	Small Scale Physical Model
SWAMP	System Wide Assessment and Monitoring Program
TBD	To be Determined
TFU	Task Force Unwatering
UBRR	Upper Barataria Risk Reduction
USACE	United States Army Corps of Engineers
USFWS	Department of Interior – U.S. Fish and Wildlife Service
WBV	West Bank and Vicinity
WHARF	Wetlands Harbor Activities Recreational Facility
WMA	Wildlife Management Area
WRDA	Title VII Water Resource Development Act

Acronymn	Full Name
Basin ID	
AT	Atchafalaya
BA	Barataria
BS	Breton Sound
CS	Calcasieu Sabine
LA	Louisiana
ME	Mermentau
MR	Mississippi River
PO	Pontchartrain
PR	Pearl River
TE	Terrebonne
TV	Teche Vermilion

Acronymn	Full Name
Project Type	
BH	Barrier Island/Headland
FD	Freshwater Diversion
HP	Hurricane Protection
HR	Hydrologic Restoration
IN	Infrastructure
MC	Marsh Creation
OR	Oyster Barrier Reef
OT	Other
SP	Shoreline Protection

Annual Plan

Addendum

Appendices online at:

Coastal.la.gov/our-plan/annual-plan

Appendix A

Ongoing Protection and Restoration Project Summaries

Appendix B

Barrier Island Status Report

Appendix C

Inventory of Non-State Projects

Appendix D

CPRA FY 2021 Capital Outlay Requests

Appendix E

Atchafalaya Basin Annual Plan





DRAFT FY 2021 Annual Plan Public Comment Period:

December 18, 2019 through February 15, 2020

Read the Plan:

[Coastal.la.gov/OurPlan/Annual Plan](http://Coastal.la.gov/OurPlan/AnnualPlan)

Email Comments:

Subject (FY2021 Annual Plan)

coastal@la.gov

Mail Comments:

CPRA

150 Terrace Ave

Baton Rouge, LA 70802

Connect With Us!



[@LouisianaCPRA](https://www.instagram.com/LouisianaCPRA)

www.coastal.la.gov

Louisiana Coastal Protection and Restoration Authority is the single state entity with authority to develop, articulate, implement, and enforce a comprehensive coastal Master Plan of unified vision, to reduce tropical storm surge flood impact, to restore our bountiful natural resources, to build land to protect our nation's critical energy infrastructure, and to secure Louisiana's coast now and for future generations.