

COASTAL PROTECTION AND RESTORATION AUTHORITY

Implementation Program Overview:
M. Jason Lanclos, P.E.

February 21, 2018



committed to our coast

2017: Our Plan

Louisiana's Comprehensive Master Plan for a Sustainable Coast



124 projects that build or maintain more than 800 square miles of land, reduce expected annual damages by \$150 Billion at Year 50.

2017 CPRA Implementation Update

Onset of Deepwater Horizon Oil Spill Funding

- Payments coming to the state annually for 15 years (2017-2032)
- Coastal Program now able to implement large scale projects
FY2019~\$600M program → FY2020/FY2021 ~\$900M program

\$267 million procured in 2017:

NFWF \$245M (E & D, Program Mgt, Permitting, Land Acquis)

Mid-Barataria Sediment Diversion; Mid-Breton Sediment Diversion; Increase Atchafalaya Flow to Terrebonne

- Adaptive Management Program; Mississippi River Sediment Diversion Program Management

NRDA \$22M (E&D and Permitting)

Terrebonne Basin Ridge and Marsh Creation – Bayou Terrebonne Increment; Lake Borgne Marsh Creation Project: Increment One

- Barataria Basin Ridge and Marsh Restoration- Spanish Pass Increment; Rabbit Island Restoration; Queen Bess Island Restoration
- Shoreline Protection at Jean Lafitte National Historic Park and Preserve -Implemented by Department of the Interior

2017 CPRA Implementation Update

Project Implementation Update

- CPRA had 33 projects in construction = Total dollar value \$985M (*without HSDRRS*)

2017 CPRA Implementation Update

Funding and Finance Initiatives

- Outcome-based performance contracting (“pay for success”) legislation passed, private sector stakeholder engagement underway
- Natural Resources Damages Banking program and compensation schedule developed
- Expansion of the Coastal Protection and Restoration Financing Corporation authority to also consider bonding of oil spill revenue streams
- Ernst and Young contracted by Restore or Retreat to partner with CPRA to investigate alternative financing and project delivery methods to achieve maximum returns.

2017: Our Work

- 7 New construction projects started – \$91.8 M
 - 4 protection, 3 restoration (1 dredging project)
Noteworthy projects include Cut-Off/Pointe aux Chene Levee, Cameron Creole Watershed Grand Bayou Marsh Creation, St. Mary Backwater Flooding
- 9 Total projects completed – \$191.6M (*without HSDRRS*)
 - 2 protection, 7 restoration (3 dredging projects)
Noteworthy projects include Shell West, Bayou Dupont Marsh Creation #3, Larose to Golden Meadow-Larose Sheetpile, Living Shoreline

Ongoing NFWF Funded Projects – BP Criminal Settlement

\$74 M

- East Timbalier Island: E&D (\$5.6 M)
- Mid-Barataria Sediment Diversion: E&D (\$37.7 M)
- Lower Mississippi River Sediment Diversions: Planning (\$12.8 M)
- Increase Atchafalaya Flow to Terrebonne: Planning (\$4.6 M)
- Adaptive Management: Louisiana River Diversions and Barrier Islands (\$13.2 M)

\$245 M

- Mid Barataria Sediment Diversion (Remaining E&D) \$102.3 M
- Mid Breton Sediment Diversion (E&D) \$90.6 M
- Increase Atchafalaya Flow to Terrebonne (E&D) \$16.4 M
- Adaptive Management: LA River Diversions and Barrier Islands Phase II \$19.6 M
- Mississippi River Sediment Diversion Program Management \$16.1 M

Mississippi River Mid-Basin Sediment Diversion

Mid-Barataria

- The EIS for Mid-Barataria is currently underway; GEC, Inc. was selected as the third-party contractor to lead the EIS.
- CPRA selected AECOM to lead the engineering and design effort
- In response to CPRA's written request, the White House Federal Permitting Improvement Steering Council rendered approval to include Louisiana's Mid-Barataria Sediment Diversion project on the Federal Permitting Dashboard, a government-wide effort to streamline the federal permitting and review process while increasing transparency
- Throughout 2018, GEC will engage the public, other federal agencies, and outside parties to provide input into the preparation of an EIS and to solicit public comment on the draft EIS once completed.

Mid-Breton

- The EIS process for the Mid-Breton Sediment Diversion project is anticipated to begin in 2018.

2017: New Starts

- NRDA

- Terrebonne Basin Ridge and Marsh Creation – Bayou Terrebonne Increment
- Lake Borgne
- Barataria Basin Ridge and Marsh Restoration- Spanish Pass Increment
- Rabbit Island Restoration
- Queen Bess

- CWPPRA

- Coastwide Salvinia Weevil Propagation Facility
- Bayou La Loutre Ridge Restoration and Marsh Creation
- St. Catherine Island Marsh Creation and Shoreline Protection
- Bayou Decade Ridge Restoration and Marsh Creation

RESTORE Act Parish Matching Program \$20M

6 projects in 6 parishes

- (\$6.67M) Cameron Parish–Construction of Rockefeller Shoreline Stabilization Project
- (\$0.41M) Lafourche Parish–E&D of Grand Bayou Freshwater Reintroduction Project
- (\$2.78M) St Bernard Parish – Construction of Lake Lery Marsh Creation Project
- (\$2.54M) St Charles Parish – Construction of Paradis Canal Gate
- (\$3M) Tangipahoa Parish – E&D and Construction of Manchac Landbridge (Rock Breakwater) Shoreline Protection Project
- (\$4.59M) Vermilion Parish – E&D and Construction of the Freshwater Bayou Shoreline Protection Project Outcome Based Performance Contracting

2018: Year To Date

Total Work in Progress = \$796M



71 Total Active Projects

- 24 – In Construction
- 8 – In Planning
- 39 – In Engineering & Design

*Implementation of these projects will benefit more than **138,000 acres of coastal habitat** and improve more than **186 miles of levee.***

2018: Next 6 Months

Headed to Construction \$39.4M

Violet Canal North Levee Alignment \$4M

- 2.1 miles of levee

Rockefeller Refuge Gulf Shoreline Stabilization \$35.4M

- 198 acres of shoreline

Projects to Bid \$49.6M

Cole's Bayou Marsh Restoration \$24.9M

- 398 acres benefited, Vermillion Parish

Lafitte Area Levee Repair \$819K

- .1 mile levee area improved, Jefferson Parish

South Grand Chenier Marsh Creation \$23.9M

- 414 acres benefited, Cameron Parish

Implementation Update

NRDA Recreational Use Plan \$22M

Proposed projects to restore for lost recreational use within Louisiana by evaluating alternatives that could compensate for a part of Louisiana's recreational fishing use injury. Public comment closes 2/15.

- Elmer's Island Recreational Access – \$6M
- Statewide Artificial Reef Enhancement - \$6M
- Lake Charles Science Center and Educational Complex - \$7M
- Pointe-aux-Chenes Island Road Fishing Piers - \$3M

GOMESA Projects

\$76M - 14 projects:

- 40 Arpent Canal Levee- Lockport Co. Canal to Butch Hill Station (North Lafourche Levee District)
- Hollywood Canal Closure Structure (North Lafourche Levee District)
- Grand Bayou (South Lafourche Levee District)
- Reach L (South Lafourche Levee District)
- Little Bayou Bleu (South Lafourche Levee District)
- Reach L Mitigation (South Lafourche Levee District)
- Rosethorne Basin Phase 1 & 2 (Lafitte Area Independent Levee District)
- Thibodaux Weir Removal (Bayou Lafourche Fresh Water District)
- Grand Isle Beach Stabilization (Grand Isle Independent Levee District)
- NF-06a.1 Drainage Canal Relocation ROW Acquisition (Plaquemines Parish)
- Ellington Levee 7' Lift- Phase II (St. Charles Parish)
- Magnolia Ridge Pump Station (St. Charles Parish)
- Magnolia Ridge Levee- Phase 1 Gaps (St. Charles Parish)
- St. James Parish 30% Design- Phases 1-3 (St. James Parish)
- Vermilion Parish Hydrology & Hydraulics Study (Vermilion Parish)

Our Initiatives

CPRA leadership met with White House Council on Environmental Quality, USACE, and NOAA to discuss streamlining permitting processes

Ongoing meetings with NOAA to discuss Marine Mammal Protection laws to expedite permitting

Letters and White Papers to the Trump Administration –Declaration Coastal State of Emergency, HSDRRS and GOMESA

Outcome Based Performance Contracting – new initiative to spur project implementation using alternative project delivery method for performance based project delivery

Executed Memorandum of Understanding – outline specific permitting agencies and identify oversight necessary to meet a two year permit timeline

CPRA Implementation

Our People

Jammie Favorite (1Q 2017):
Planning and Research



Ben Barnes (2Q 2017):
Land Division



Eddie Falgoust (3Q 2017):
Project Accounting Section



Katie Freer –Leonards (4Q 2017):
Project Management



CPRA Implementation

Tools we utilize to manage our projects

Tracking and Managing our Projects

Update in CPRA Project Budgeting and Accountability

Presented by Janice Lansing, CFO

Progress for CPRA Business Operation

- *CPRA has implemented significant and very positive changes for a more efficient and effective business operation.*
- *These changes were necessary to position CPRA for the upcoming receipt of large amounts of funding from various avenues, and to be accountability for the expenditures.*

Progress for CPRA Business Operation

1) FY 14-15 - Converted from the state's legacy accounting system, ISIS, to the new state ERP system, called LaGov – (Phase 1)

- ✓ One system for all transactions - contracts, procurement, human resources***
- ✓ Better accountability for project expenditures by funding source (which was not available to us in legacy system)***
- ✓ Faster reimbursement from federal grants and other funding sources – important for cash flow***
- ✓ Improved reporting***
- ✓ Increased visibility for auditing***

Progress for CPRA Business Operation

2) FY 14-15 – Moved funding for coastal restoration and protection projects out of the General Operating Budget, typically known as HB 1, to the Capital Outlay budget, typically known as HB2.

- ✓ Allows for project accounting with greater flexibility - not limited to one fiscal year of funding***
- ✓ Expenditure request is based on projects identified in each CPRA Annual Plan***

Progress for CPRA Business Operation

3) FY 16-17 – Established a Financial Services Section within CPRA rather than utilizing the Department of Natural Resources to provide these services.

- ✓ Annual cost savings***
- ✓ Improved processes overall – standardized and streamlined processes***
- ✓ Established project accounting team to interface directly with project managers***

Progress for CPRA Business Operation

4) FY 16-17 to present – Phase 2 of LaGov Implementation – accessing other features in LaGov through Project Systems (PS) Module

- ✓ Gives Project Managers essential tools to manage entire project within the LaGov system***

Progress for CPRA Business Operation Closing Comments

- ***CPRA funding is a complicated business***
- ***With these measures and tools, CPRA is in a great position***
- ***LaGov implementation has been an enormous success***
 - ***Challenges, yes***
 - ***Benefits have exceeded our expectations***
- ***This Board, the Administration and the Legislature have provided CRPA the appropriate support and necessary level of resources***
- ***Continuous Improvement is key***



Integrated Ecosystem Restoration and Hurricane Protection in Coastal Louisiana: **FY2019 Annual Plan**



committed to our coast

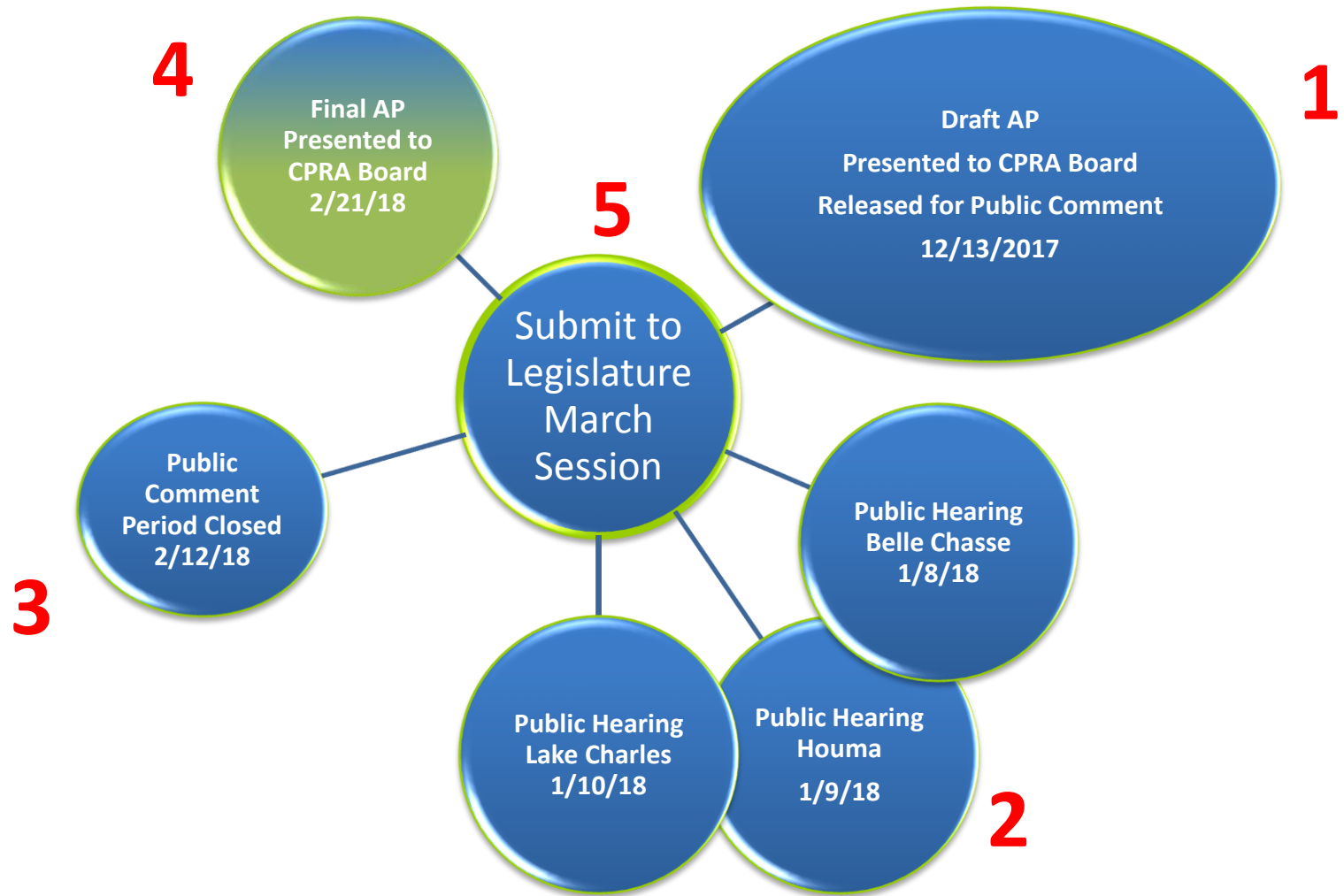
WHY we do it?

- To comply with Act 523 of 2009 Regular Session
(amended by Act 604)

WHAT is it?

- A request for authorization to spend revenues if received
- 3-year outlook:
 - Projected revenues and expenditures
 - Project activity and implementation schedules

What's the Process?

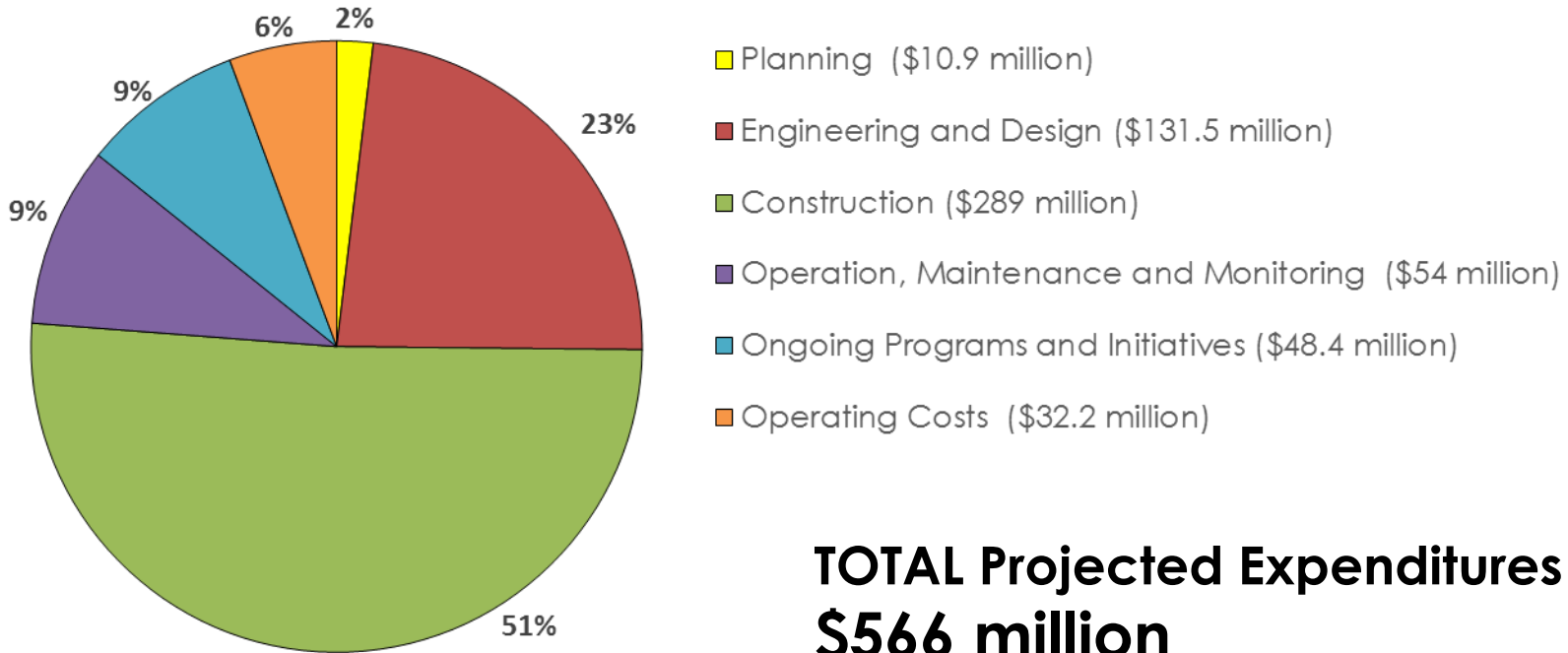


Revenues and Expenditures Based on PROJECTIONS

Primary revenue streams:

- Annual recurring revenues: State mineral revenues, GOMESA
- Annual payments 2017-2032: DWH Oil Spill dollars
NRDA, NFWF, RESTORE Act
- Other grant-based programs (Federal CWPPRA reimbursement)

Projected FY19 Expenditures By Project Phase



**TOTAL Projected Expenditures
\$566 million**

86% project-associated expenditures
Planning, E & D, Construction, OM & M

Construction includes Beneficial Use (\$2 million)

OM&M includes BIMP (\$2.9 million) and Repair/Rehabilitation of Projects (\$1.1 million)

Projected FY 19 Expenditures

For Projects ONLY

Planning  2 projects, \$10.9 million

Engineering & Design  42 projects, \$131.5 million

Construction  21 projects, \$289 million

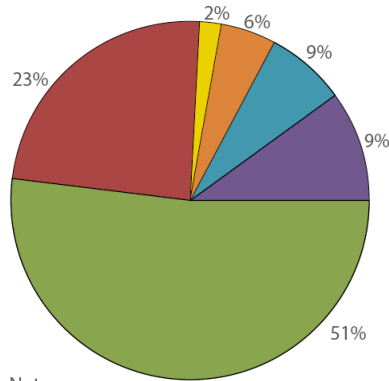
OM&M  136 projects, \$54 million

86% Project-Associated Expenditures

\$485.4 million

Projected Expenditures – FY19, FY20, FY21

By Project Phase



FY2019

- Planning (\$10.9 million)
- Engineering and Design (\$131.5 million)
- Construction (\$289 million)
- Operation, Maintenance and Monitoring (\$54 million)
- Ongoing Programs and Initiatives (\$48.4 million)
- Operating Costs (\$32.2 million)

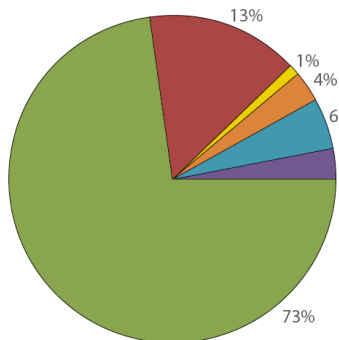
(86% project-associated costs)

Planning, E & D, Construction, OM & M

Notes

- Construction includes Beneficial Use (\$2 million)
- OM&M includes BIMP (\$2.9 million) and Repair/Rehabilitation of Projects (\$1.1 million)

TOTAL Expenditures
\$566 million



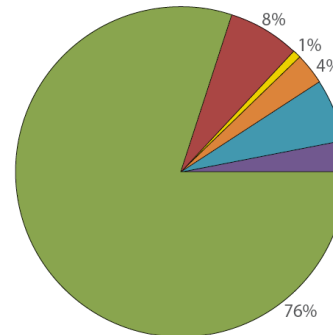
FY2020

- Planning (\$7.8 million)
- Engineering and Design (\$123 million)
- Construction (\$663 million)
- Operation, Maintenance and Monitoring (\$28.9 million)
- Ongoing Programs and Initiatives (\$56.2 million)
- Operating Costs (\$35.1 million)

Notes

- Construction includes Beneficial Use (\$2 million)
- Engineering and Design and Construction include CWPPRA adjustment for outlying years (see Table 4-2 for explanation)
- Total excludes HSDRRS payback (\$98.4 million)

TOTAL Expenditures
\$914 million



FY2021

- Planning (\$6.7 million)
- Engineering and Design (\$67 million)
- Construction (\$630 million)
- Operation, Maintenance and Monitoring (\$31.1 million)
- Ongoing Programs and Initiatives (\$55.2 million)
- Operating Costs (\$36 million)

Notes

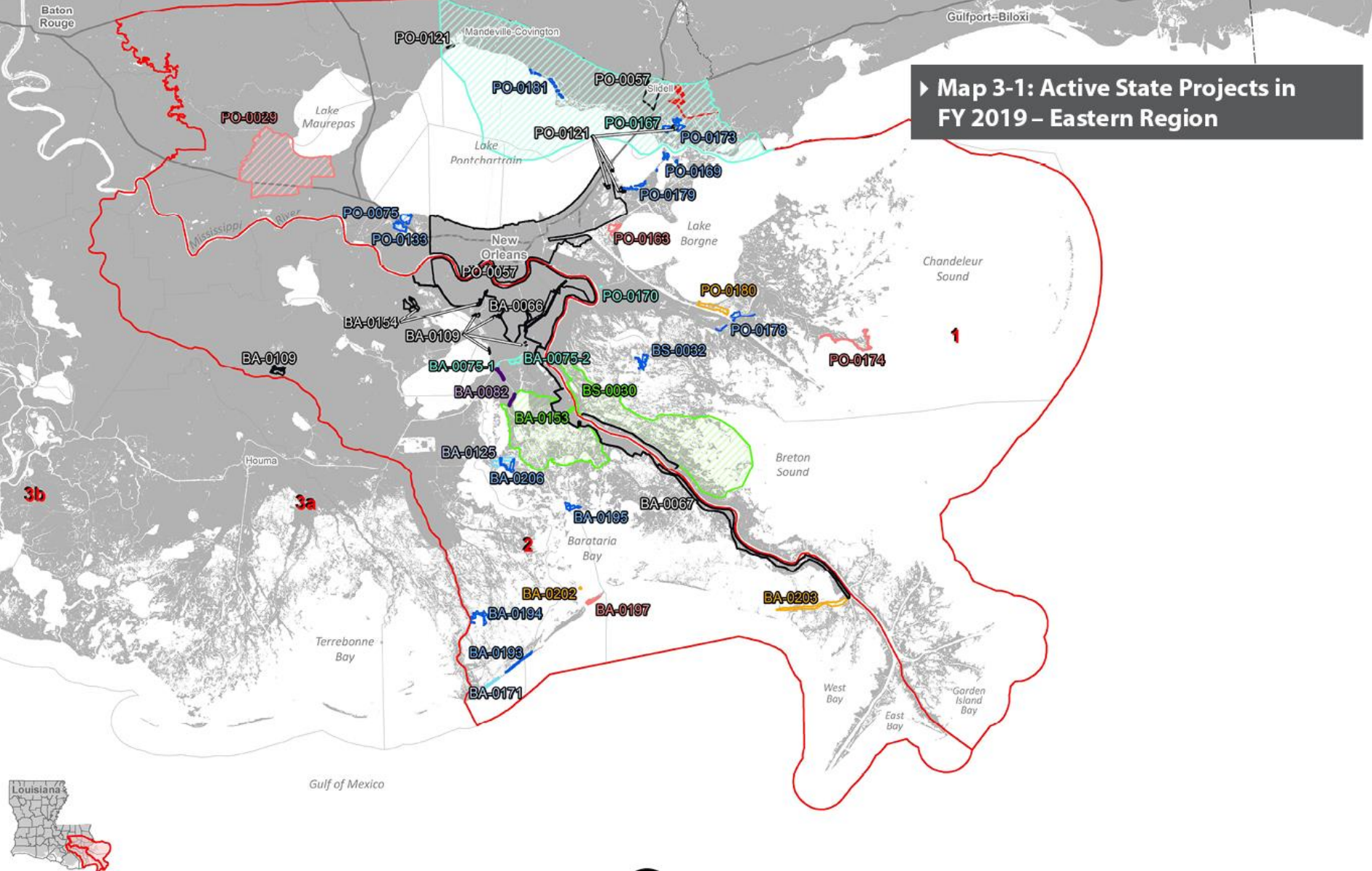
- Construction includes Beneficial Use (\$2 million)
- Engineering and Design and Construction include CWPPRA adjustment for outlying years (see Table 4-2 for explanation)
- Total excludes HSDRRS payback (\$98.4 million)

TOTAL Expenditures
\$826 million

(~90% project-associated costs)

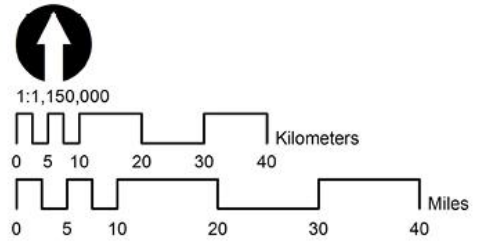
Planning, E & D, Construction, OM & M

▶ Map 3-1: Active State Projects in FY 2019 – Eastern Region



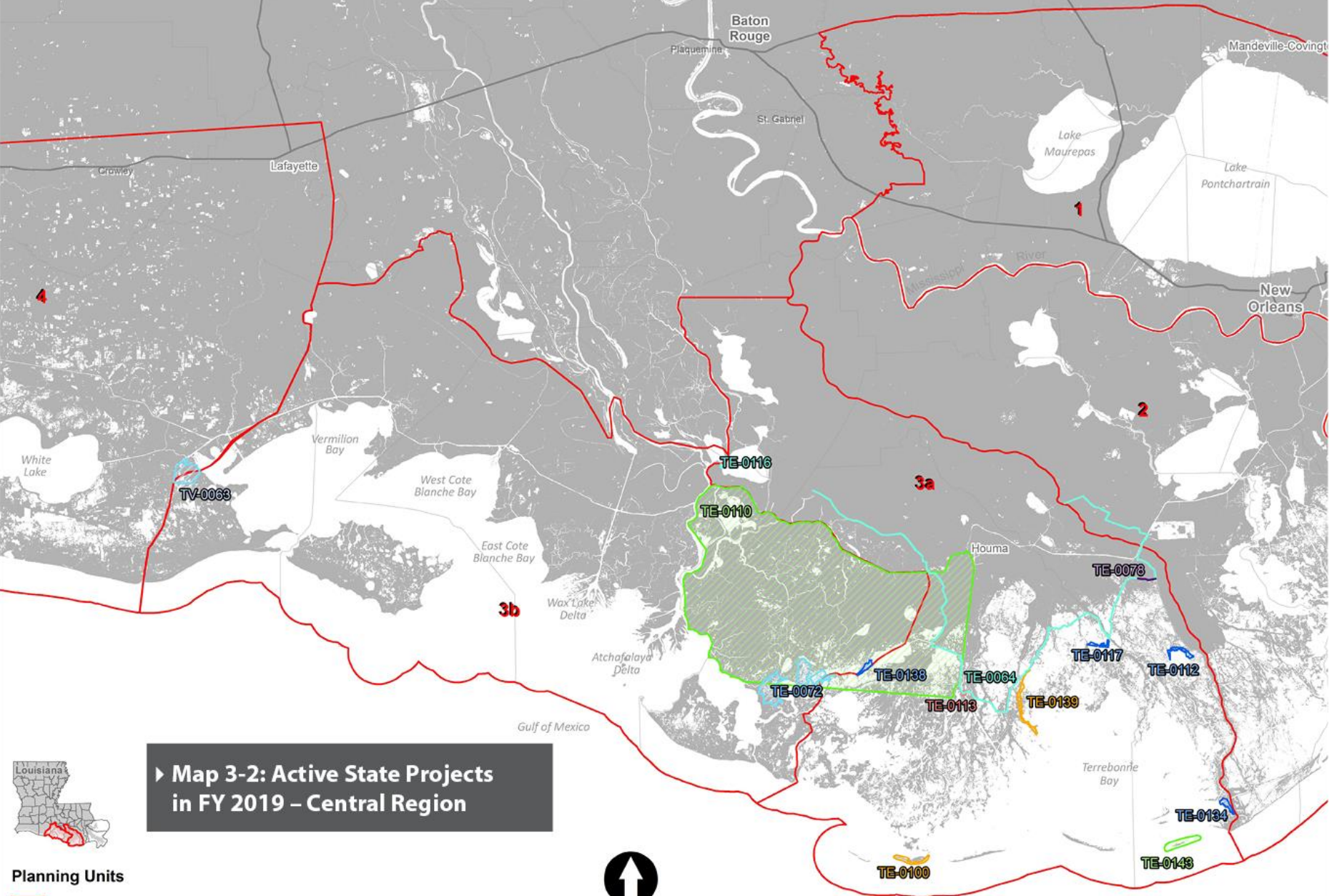
Planning Units

- CDBG (Pink hatched)
- CWPPRA PH. I (Blue hatched)
- CWPPRA PH. II (Light blue hatched)
- HSDRRS (Dark blue hatched)
- NFWR (Green hatched)
- NRDA (Yellow hatched)
- RESTORE (Red hatched)
- STATE (Cyan hatched)



Projects not included on map:

BA-0158	HSDRRS	PU1, PU2
BA-0159	HSDRRS	PU1, PU2
LA-0276	NFWR	PU1, PU2
LA-0284	CWPPRA	COASTWIDE
MR-0168	RESTORE	PU1, PU2

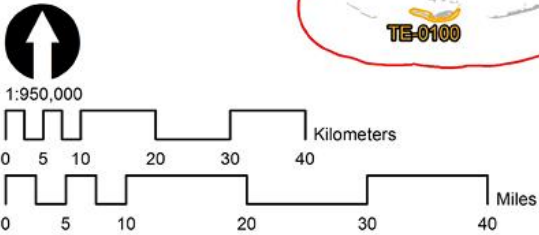


► Map 3-2: Active State Projects in FY 2019 – Central Region

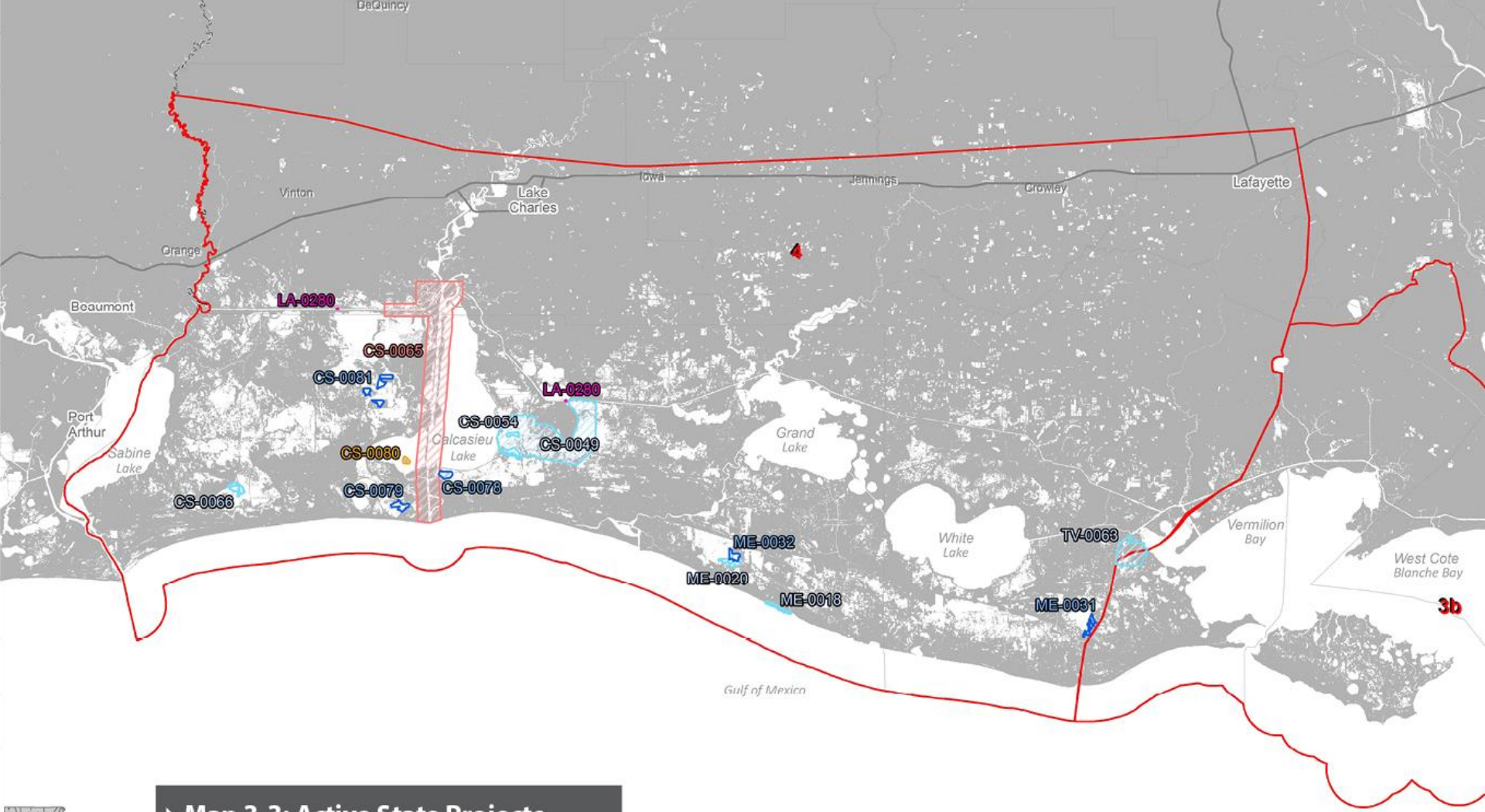


Planning Units

-
- CDBG**
- CWPPRA PH. I**
- CWPPRA PH. II**
- NFWF**
- NRDA**
- RESTORE**
- STATE**



Projects not included on map:
LA-0284 CWPPRA COASTWIDE



▶ Map 3-3: Active State Projects in FY 2019 – Western Region



Planning Units



CWPPRA DEMO



CWPPRA PH. I



CWPPRA PH. II



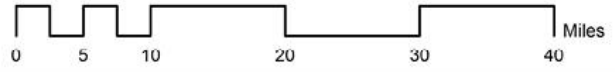
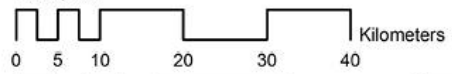
NRDA



RESTORE



1:880,000



Projects not included on map:
LA-0284 CWPPRA COASTWIDE



Coastal Protection and Restoration Authority

150 Terrace Ave Baton Rouge, LA 70802

225-342-7308



CONNECT WITH US!



SUBSCRIBE



Email: Coastal@LA.gov

@LouisianaCPRA

Website: www.coastal.la.gov

Parish Matching Program Amendment to the Louisiana RESTORE Plan



CPRA Board

February 21, 2018

Chris Barnes, Governor's Office for Coastal Activities

Vida Carver, P.E., CPRA

First Amended LA RESTORE Plan

- Identifies how all of LA's Direct and Spill Impact Component funds will be used, including those to be paid over a 15 year period.
- Approved by CPRA Board on January 18, 2017.
- Approved by RESTORE Council and U.S. Dep't of Treasury in March 2017.

Project Name	Direct Component	Spill Impact Component	Total
Calcasieu Ship Channel Salinity Control Measures	\$260.4 million	\$0	
Houma Navigation Canal Lock Complex	\$0	\$366 million	
Adaptive Management	\$0	\$60.9 million	
Parish Matching	\$0	\$100 million	
Contingency Funds	-	\$ 24.6 million	
Estimated Totals	\$260.4 million	\$551.5 million	\$811.9M

Parish Matching Program

- Up to \$100M over 15 year period.
- Initial solicitation of up to \$20M opened on July 3, 2017
 - Solicitation originally set to close Aug. 31, 2017.
 - Extended 2 weeks until Sept. 14, 2017 due to Hurricane Harvey.
- Minimum Project Standards
 - Meet the requirements of the RESTORE Act;
 - Be consistent with the objectives of the State's Coastal Master Plan; and
 - Be included for funding with Direct Component funds in the parish's RESTORE Act Multiyear Implementation Plan.
- Detailed requirements were provided in the initial solicitation.
- CPRA Board approved the draft list of projects on December 13, 2017.

Draft Parish Matching Amendment

- Draft amendment will be published on CPRA's website for public comment for a minimum of 45 days.
 - <http://coastal.la.gov> under "What's New"
- Comments accepted: Feb. 21-April 9, 2018
- Comments submitted to:
 - Via email to: coastal@la.gov, or
 - Via regular mail to: CPRA, Public Comments, 150 Terrace Avenue, Baton Rouge, LA 70802

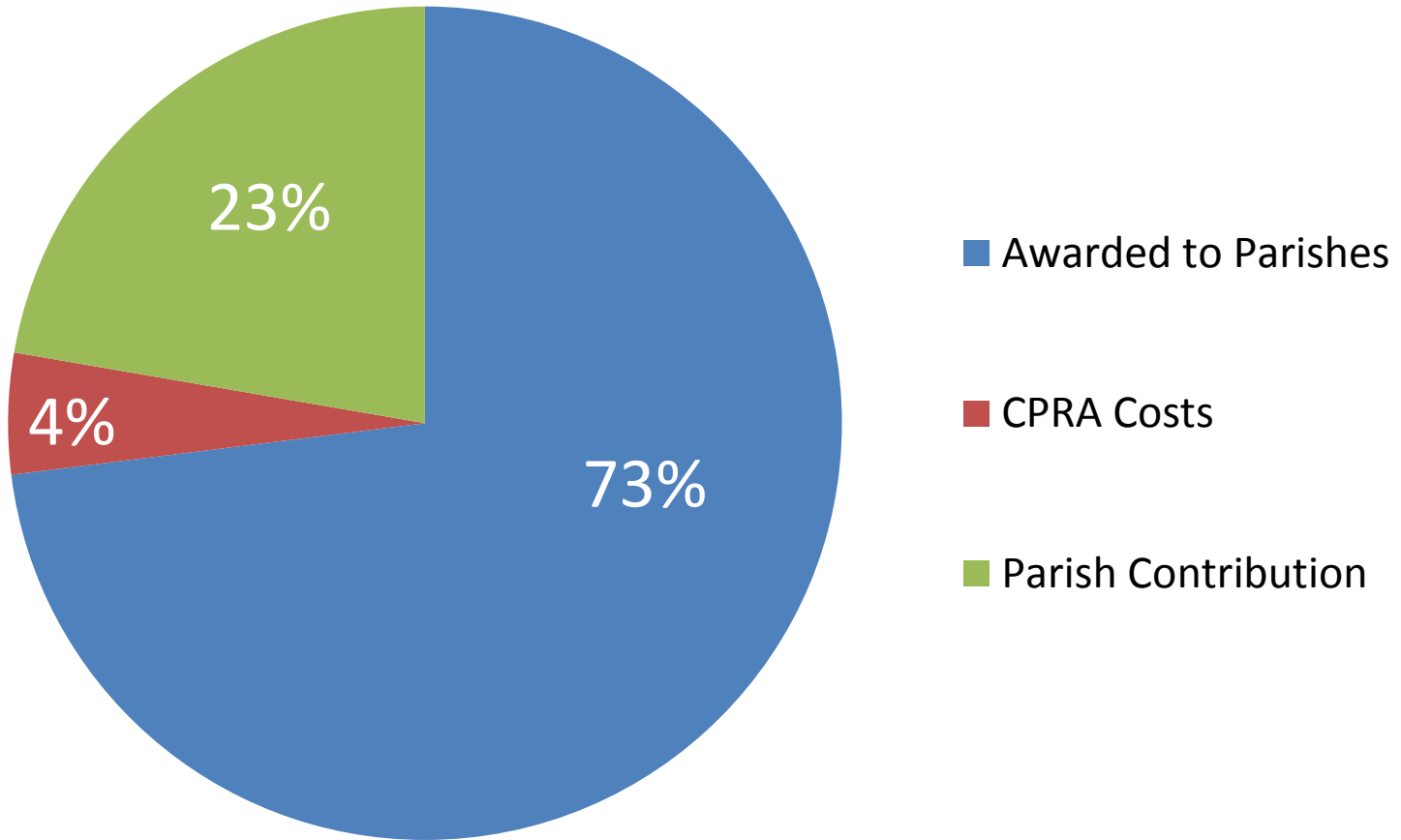
Next Steps

- Draft Parish Matching Amendment will be updated based on public comment.
- Once the amendment is updated and revised, the final amendment will be subject to CPRA Board approval.
- Once approved by the CPRA Board, the amendment will be submitted to the RESTORE Council as a prerequisite to CPRA's application for Spill Impact Component funding.
- State will be notified in writing once it may apply for grants to fund activities consistent with the amendment.

Parish Matching Projects

Project Name	Parish	Description	Amount Awarded To Parish	Amount Including CPRA Costs	Parish Contribution	Total Project Cost
Freshwater Bayou Shoreline Protection	Vermilion	E&D and construction of approximately 10,600 linear feet of foreshore rock dike along the eastern bank of Freshwater Bayou Canal.	\$4,594,023	\$4,832,624	\$494,725	\$5,327,349
Grand Bayou Freshwater Reintroduction	Lafourche	E&D a project to increase flow of fresh water from GIWW into Grand Bayou Canal, redirect freshwater from Grand Bayou into marshes east of Grand Bayou, create 112 acres of fresh marsh and nourish 14 acres of marsh west of Grand Bayou.	\$412,722	\$599,386	\$275,147	\$874,533
Lake Lery Marsh Creation	St. Bernard	Construction of CIAP-designed 39 acre marsh creation area along southwestern shore of Lake Lery.	\$2,781,000	\$2,997,844	\$300,000	\$3,297,844
Manchac Landbridge (Rock Breakwater) Shoreline Protection	Tangipahoa	Update E&D and construct 5,348 linear feet of rock breakwater along the Lake Pontchartrain shoreline.	\$3,000,000	\$3,179,266	\$491,871	\$3,671,137
Paradis Canal Gate	St. Charles	Construction of Paradis Canal Gate as part of the St. Charles Parish West Bank Hurricane Protection Levee and the larger Upper Barataria Risk Reduction System.	\$2,540,724	\$2,827,150	\$2,540,724	\$5,367,874
Rockefeller Shoreline Stabilization	Cameron	Update E&D and construction of shoreline stabilization along the Gulf shoreline from Joseph Harbor westward.	\$6,671,531	\$6,848,575	\$2,000,000	\$8,848,575

Parish Matching Projects



CPRA-RESTORE Parish Matching Projects



Westward Expansion of the
CWPPRA Rockefeller Refuge
Shoreline Protection

Freshwater Bayou Canal
Shoreline Protection

Manchac Landbridge
(Rock Breakwater)
Shoreline Protection

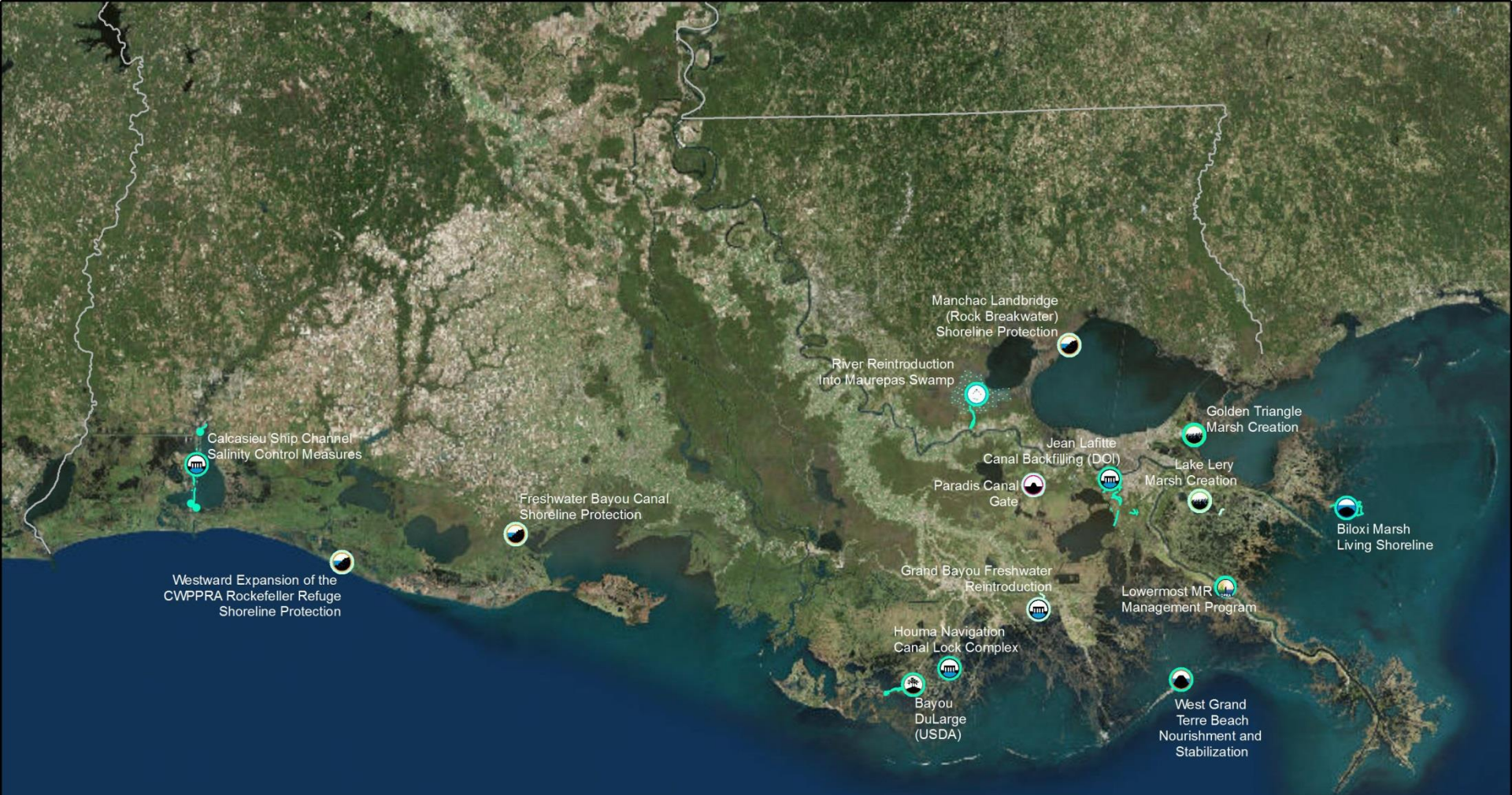
Paradis Canal
Gate

Lake Lery
Marsh Creation

Grand Bayou Freshwater
Reintroduction

RESTORE (Parish Matching)

All CPRA RESTORE Projects



RESTORE

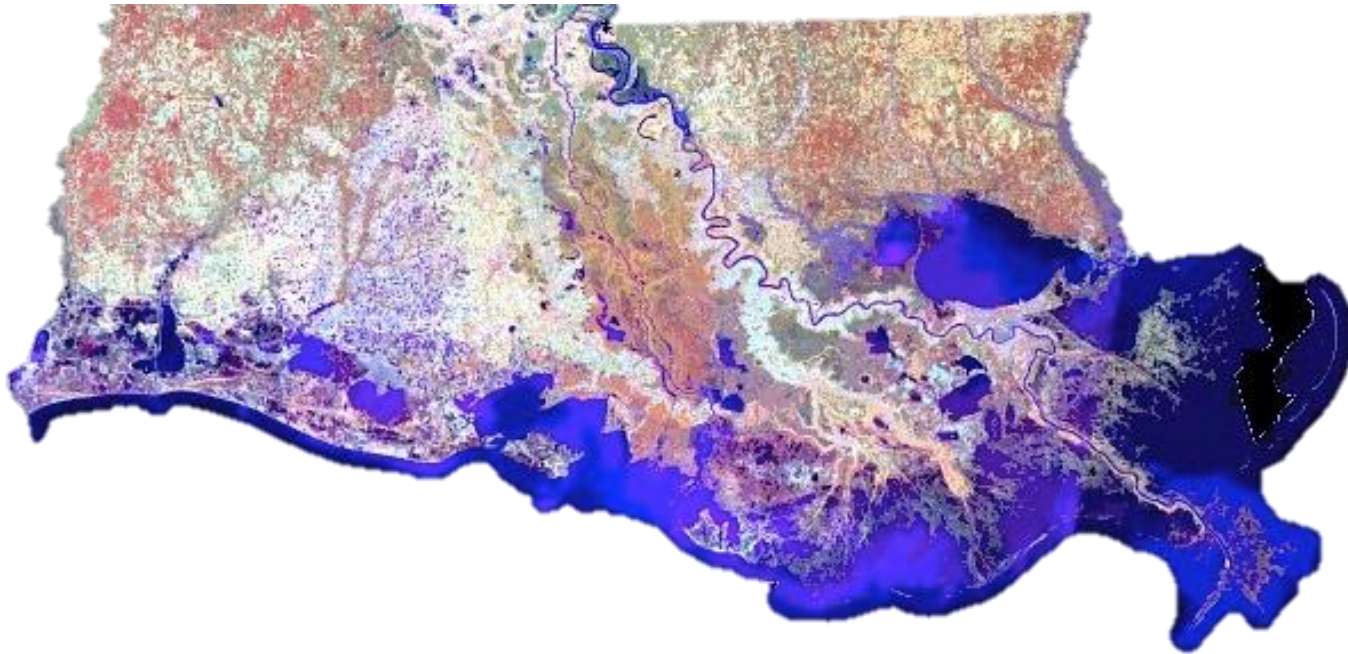
RESTORE (Parish Matching)

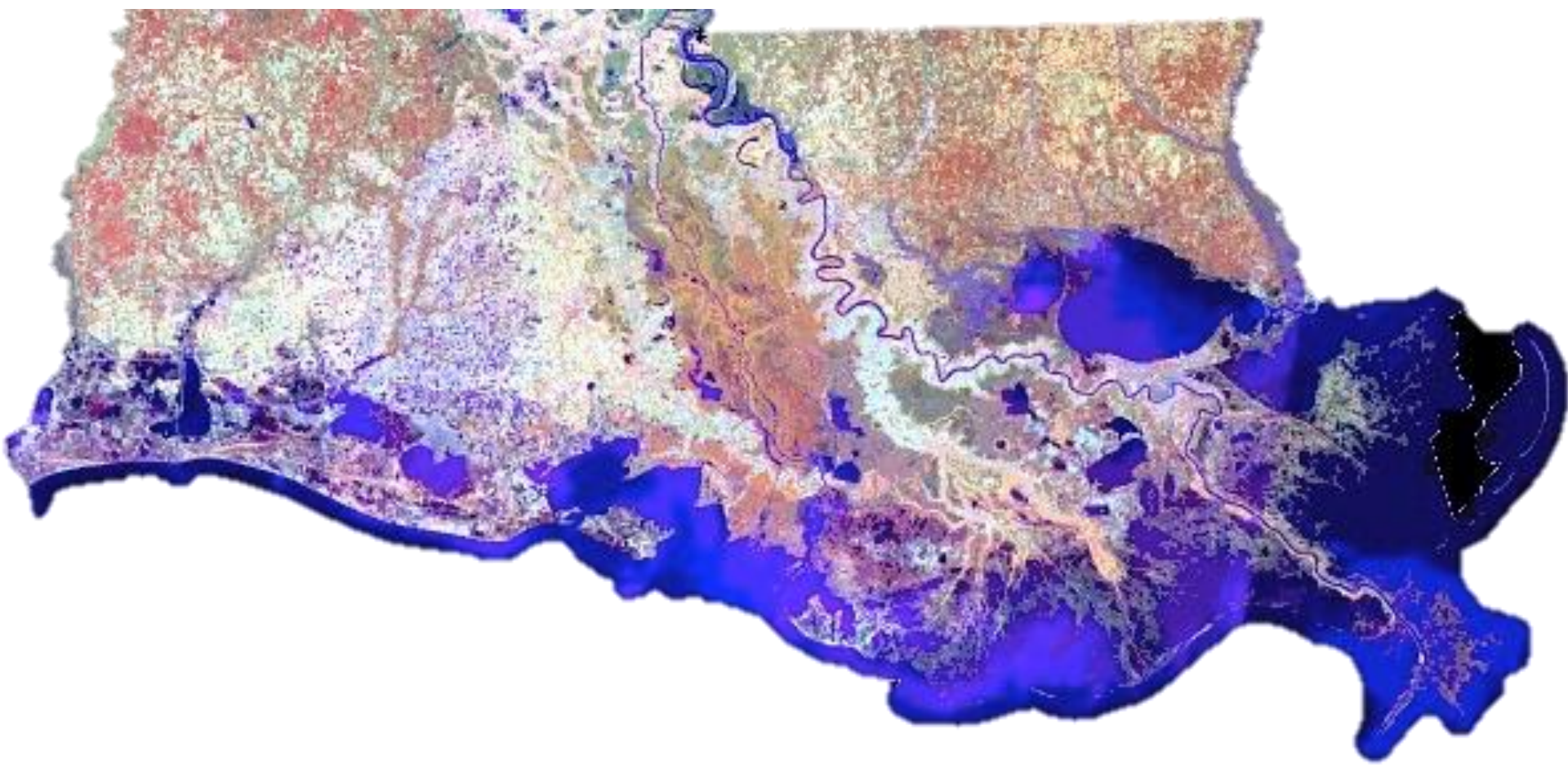


Thank You

COASTAL LOUISIANA LEVEE CONSORTIUM

An Advisory Commission to the Coastal Protection and Restoration Authority









**Sometimes fishermen stretch the truth
about the size of their catch...**



...but not in Louisiana!







B-North Terrace Partners

- ConocoPhillips
- Ducks Unlimited
- North American Wetland Conservation Council
- Lafourche Parish Government
- CPRA
- South Lafourche Levee District

04.05.2017



01.03.2018



01.03.2018





06.17.2016



03.23.2017



THANKS
TRUC RONALD WINDELL
FOR SCREWING YOUR
PEOPLE AND LEVEES

WE Said


01.05.2017