





WHO IS THE COASTAL PROTECTION AND RESTORATION AUTHORITY?

Louisiana Coastal Protection and Restoration Authority is the single state entity with authority to develop, articulate, implement, and enforce a comprehensive coastal protection and restoration Master Plan of unified vision to reduce hurricane storm surge flood impact, to restore our bountiful natural resources, to build land to protect our nation's critical energy infrastructure, and to secure Louisiana's coast now and for future generations.

Visit www.coastal.la.gov and subscribe to our mailing list to receive weekly updates!

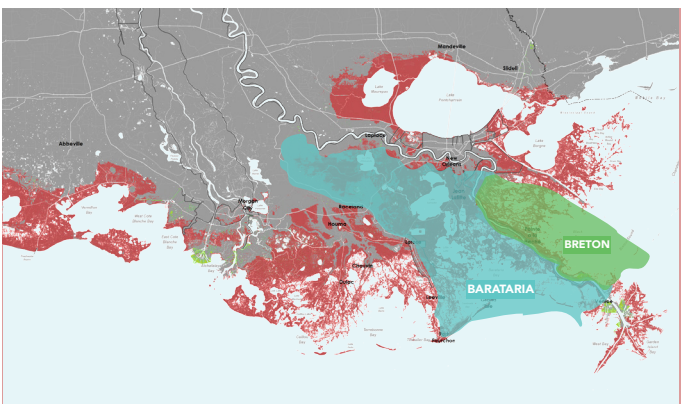


STAY INFORMED & ENGAGED

-  **COME VISIT WITH CPRA STAFF EACH MONTH, AS THEY VISIT LOUISIANA COASTAL PARISHES**
-  **ATTEND A CPRA BOARD MEETING TO ENGAGE WITH CPRA LEADERSHIP**
-  **VISIT COASTAL.LA.GOV TO LEARN MORE ABOUT THIS PROJECT AND OTHER COASTAL RESTORATION EFFORTS**
-  **EMAIL US AT COASTAL@LA.GOV**
-  **FOLLOW CPRA ON SOCIAL MEDIA FOR RELEVANT UPDATES**

MID- BRETON SEDIMENT DIVERSION





WHAT'S AT STAKE?

FUTURE WITHOUT ACTION

- » We are facing a crisis - our coast is under attack - we have lost 1,900 square miles of land in the last 80 years.
- » If we don't act quickly and boldly, our children, their grandchildren, the state of Louisiana, and the entire country will face the consequences.
- » The only way to fix this problem is to focus on the root issue, not the symptoms.



LAND LOSS



FLOODING TO OUR HOMES & BUSINESSES



LOUISIANA'S FUTURE ECONOMY, INFRASTRUCTURE, & CULTURE



U.S. ECONOMY NAVIGATION, ENERGY, & SEAFOOD PRODUCTION

EFFORTS

CPRA'S COASTAL RESTORATION EFFORTS SINCE 2007

\$20 BILLION
SECURED FOR PROTECTION & RESTORATION
PROJECTS IN 20 PARISHES

120 MILLION
CUBIC YARDS
OF FILL UTILIZED

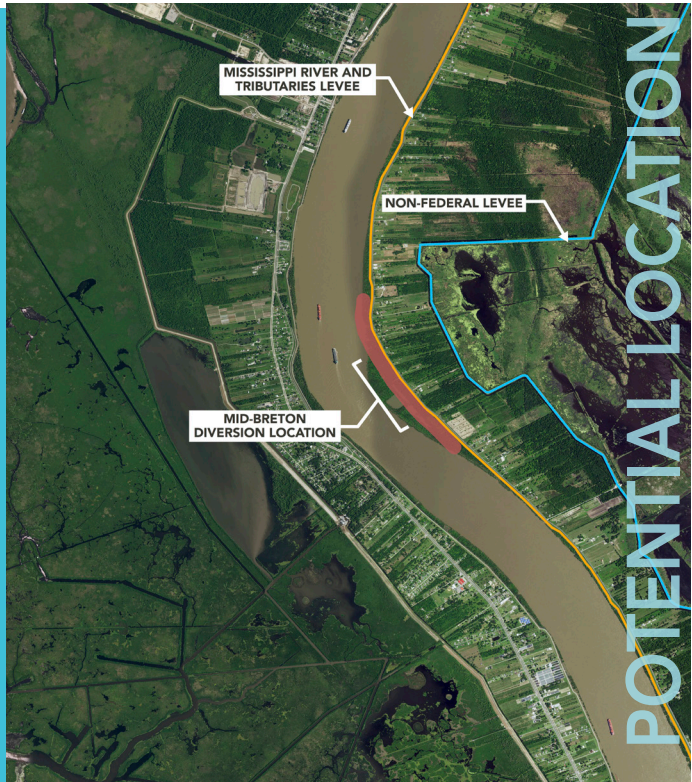
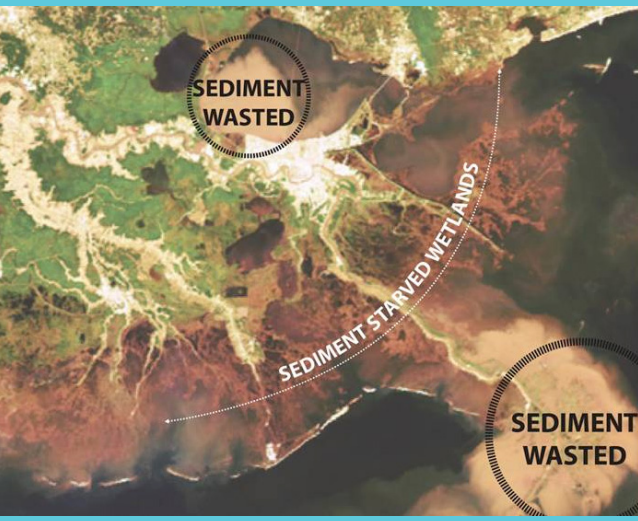
282 MILES
OF LEVEE
IMPROVEMENT

60 MILES
OF BARRIER ISLANDS & BERMS
CONSTRUCTED/UNDER CONSTRUCTION

36,161
ACRES OF LAND
BENEFITED

WHY SEDIMENT DIVERSIONS?

- » The river is a powerful land building tool - in fact, the only healthy and growing parts of the delta and our entire coast are connected to a major river (Mississippi and Atchafalaya).
- » Reconnecting the river to our basins through sediment diversions is the most effective and sustainable approach to build and sustain land and is a key component of an integrated and comprehensive solution outlined in Louisiana's Coastal Master Plan that includes barrier islands, marsh creation, ridge restoration, levees, and non-structural protection.
- » Sediment diversions will produce results that are consistent with master plan objectives – to use natural processes to build and maintain land, reduce flood risk, and support habitats and ecosystems.
- » Future generations and our entire state are depending on us.



PROCESS & TIMELINE

FUTURE WITH ACTION

- » The National Environmental Policy Act (NEPA) requires federal agencies to integrate environmental values into their decision making processes by considering the environmental impacts of their proposed actions and reasonable alternatives to those actions. The NEPA process for this project will likely start sometime in 2019 and there will be multiple opportunities for the public to provide commentary on this project throughout this process. Construction is not anticipated to begin until 2023. This date is contingent on funding, permitting, and real estate acquisitions being in place, therefore as the project progresses this date may change based on schedule improvements or delays.