

- DENOTES FIRE EXTINGUISHERS




DENOTES FIRE ALARM

11	11/06/15	ASH 0003
10	10/05/15	ASH 0002
9	05/05/15	ISSUE FOR CONSTRUCTION
8	04/17/15	PERMIT COMMENT REVISIONS
7	03/25/15	ASH 0001
6	01/22/15	ISSUE FOR PERMIT
4	12/05/14	ISSUE FOR BID
3	10/05/14	ISSUE FOR 75% CONSTRUCTION DOCUMENTS
2	06/24/14	ISSUE FOR DESIGN DEVELOPMENT
1	04/20/14	ISSUE FOR SCHEMATIC DESIGN
No.	Date	Description
Submissions & Revisions		
Owner		
Commercial Properties Realty Trust (CPRT) 4024 Fourth Street Baton Rouge, LA 70802 225.924.7358 225.924.1555		
General Contractor		
The Lemoine Company 15556 Ardore Highway Baton Rouge, LA 70817 724.143.1710		
Architect		
ANTUNOVICH ASSOCIATES Architects • Planners • Interior Design 1111 Louisiana Turnpike Suite 1117 Lafayette, LA 70508 225.924.4700		
Landscape Architect		
McKnight Landscape Architects 665 S. Foster Drive, Ste 101 Baton Rouge, LA 70808 225.924.1255		
Mechanical Engineer		
CS Associates, Inc. 4532 River 103rd Street Oak Lake, IL 60453 708.473.4766		
M.E.P. & P. Engineers		
Ingenuity Engineers, Inc. 4768 New Brand Street, Ste 300 Orlando, FL 32804 407.348.6007		
Civil Engineer		
Startec 500 Main Street Baton Rouge, LA 70801 225.745.7400		

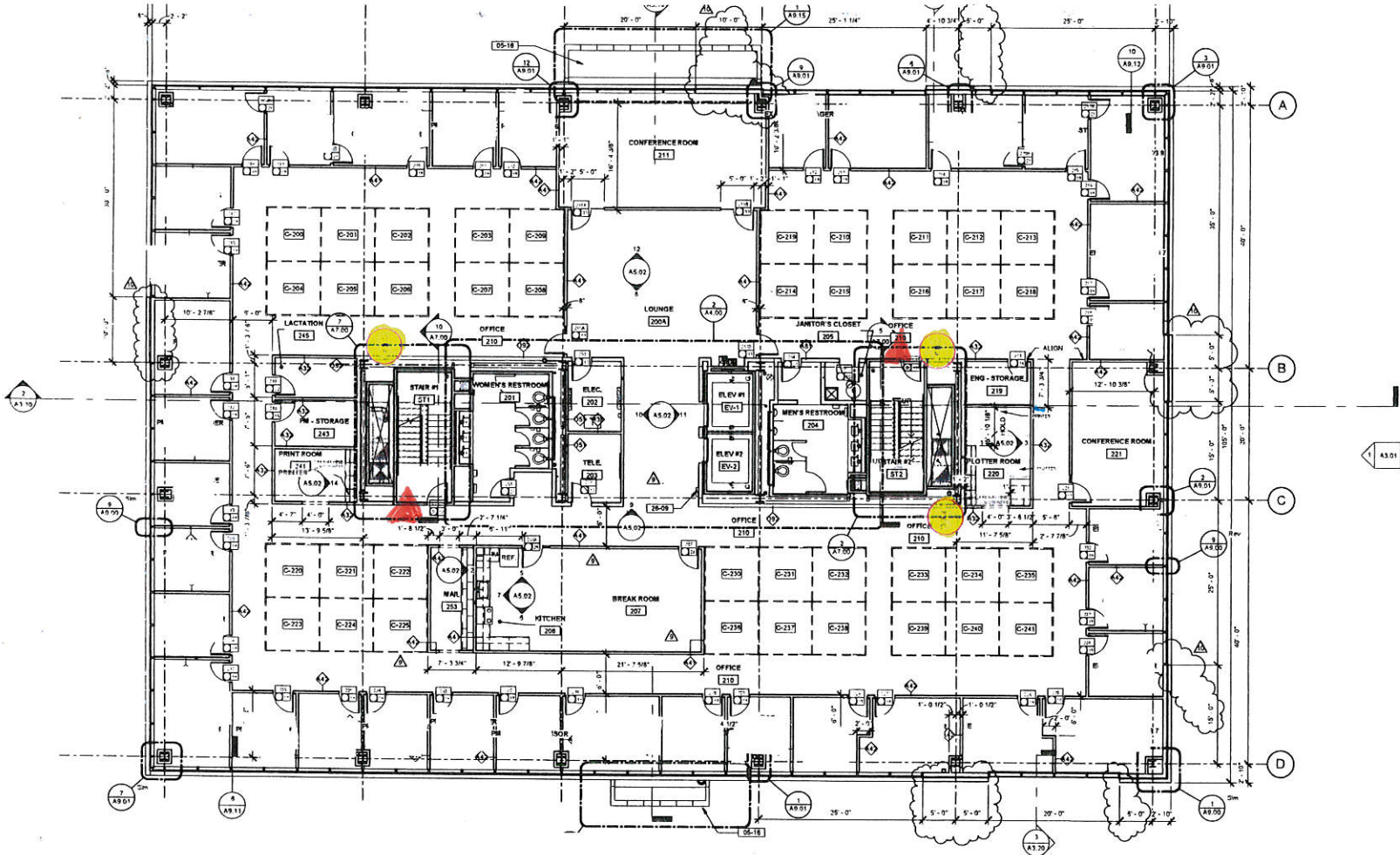
Project Location
CPRA BUILDING 10A
THE WATER CAMPUS
150 TERRACE ST. BATON ROUGE, LA 70802

Drawing Title
FIRST FLOOR

Scale	Date
	06/16/14
Drawn By	JLO
Checked By	
Project No.	

Drawing No.
A2.01

PROVIDENT LIFE



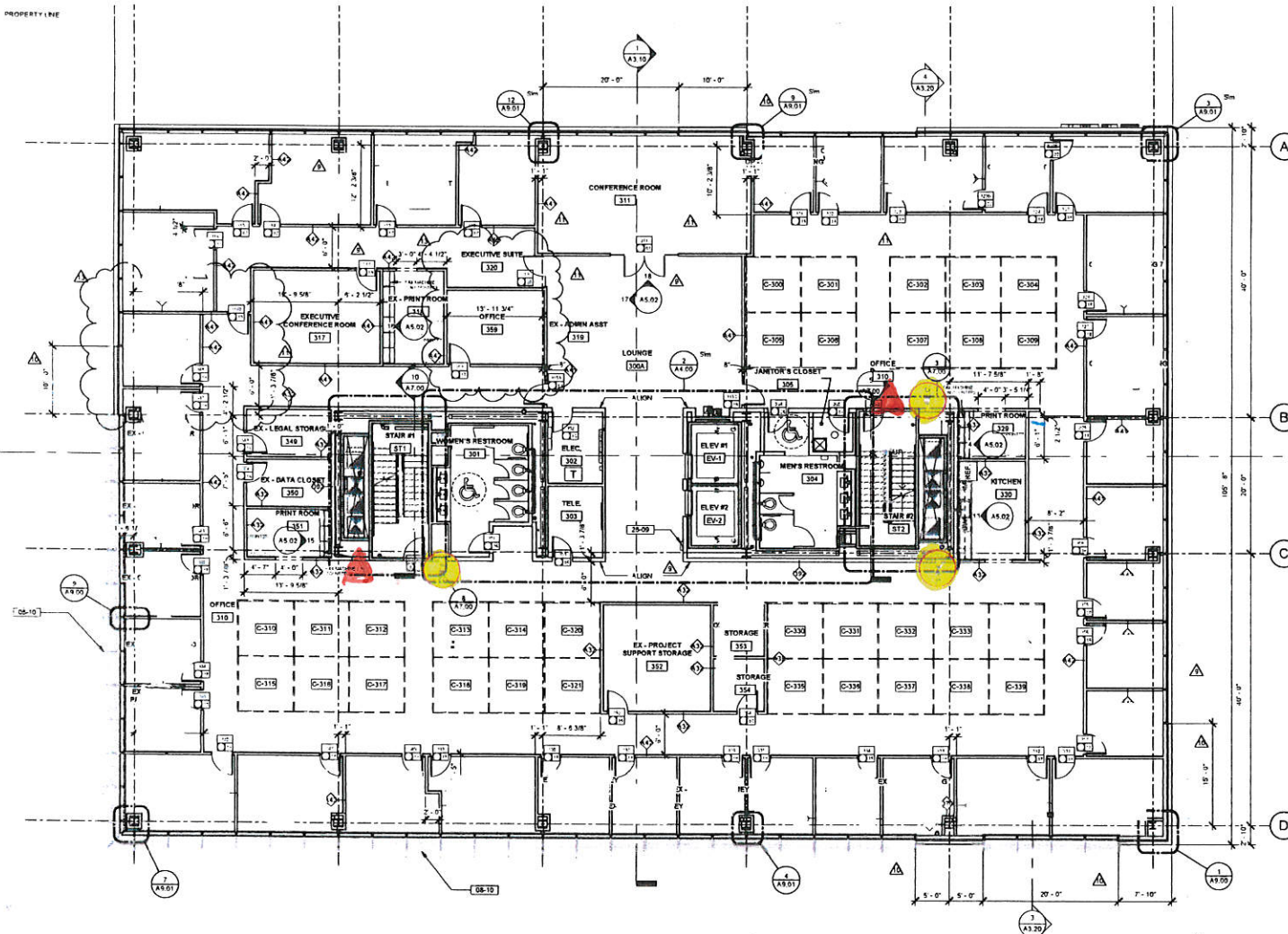
- DENOTES FIRE EXTINGUISHERS



DENOTES FIRE ALARM

10	10/16/15	AS1602
9	10/01/15	ISSUE FOR CONSTRUCTION
8	3/17/15	ISSUE FOR PERMIT
4	12/06/14	ISSUE FOR BID
1	10/04/14	ISSUE FOR 75% CONSTRUCTION DOCUMENTS
2	09/24/14	ISSUE FOR DESIGN DEVELOPMENT
1	08/20/14	ISSUE FOR SCHEMATIC DESIGN
No.	Date	Description
Submissions & Revisions		
Owner		
Commercial Properties Realty Trust (CPRT) 4526 Fourth Street Baton Rouge, LA 70802 225.924.1255		
General Contractor		
The Lemoine Company 15355 Ardore Highway Baton Rouge, LA 70817 774.983.3700		
Architect		
ANTUNOVICH ASSOCIATES Architects • Planners • Interior Design 1000 Lakeshore Drive Lafayette, LA 70503 337.487.1100		
Landscape Architect		
McKnight Landscape Architects 548 S. Foster Drive, Ste 101 Baton Rouge, LA 70805 225.924.1255		
Structural Engineer		
CS Associates, Inc. 4332 West 102nd Street Oak Lawn, IL 60451 708.427.5306		
M.E.P. & P. Engineers		
Ingenuity Engineers, Inc. 4758 New Grand Street, Ste 100 Orlando, FL 32804 407.784.0001		
Civil Engineer		
Stantec 500 Main Street Baton Rouge, LA 70801 225.743.7400		
Project Name		
CPRA BUILDING 10A		
150 TERRACE ST. BATON ROUGE, LA 70802		
Drawing Title		
SECOND FLOOR		
Scale	Date	Drawn By
AS1602	09/24/14	FLD
Drawn By	Checked By	Project No.
FLD	Checker	
Drawing File		
A2.02		

PROPERTY LINE

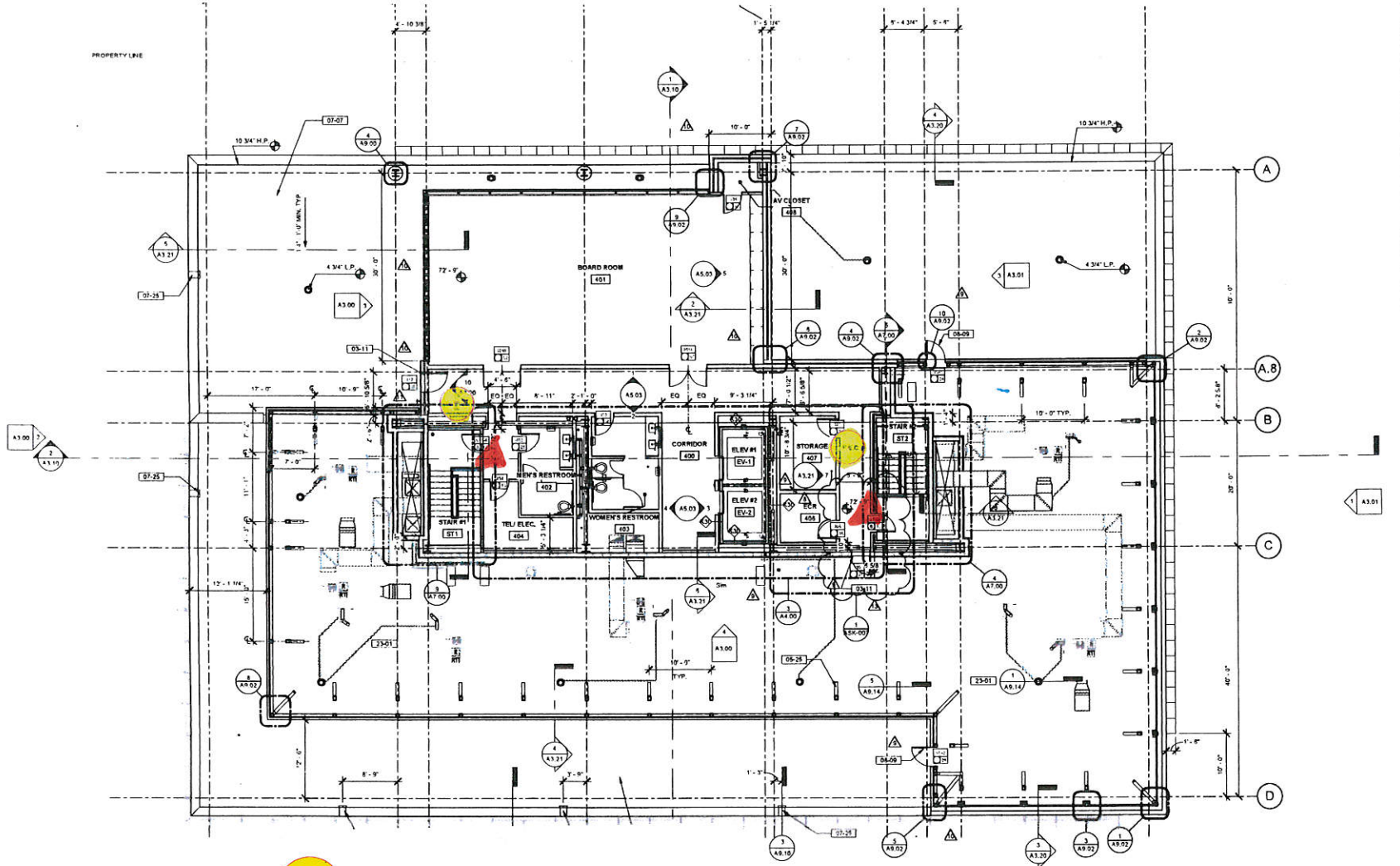


- DENOTES FIRE EXTINGUISHERS



DENOTES FIRE ALARM

<p>13 02/12/15 ASI #004</p> <p>11 11/06/15 ASI #003</p> <p>10 10/01/15 ASI #002</p> <p>9 06/09/15 ISSUE FOR CONSTRUCTION</p> <p>8 01/23/15 ISSUE FOR PERMIT</p> <p>4 12/05/14 ISSUE FOR BID</p> <p>3 10/15/14 ISSUE FOR TPA CONSTRUCTION DOCUMENTS</p> <p>2 09/24/14 ISSUE FOR DESIGN DEVELOPMENT</p> <p>1 08/20/14 ISSUE FOR SCHEMATIC DESIGN</p> <p>No. Date Description</p> <p>Submissions & Revisions</p>	
<p>Owner</p> <p>Commercial Properties Realty Trust (CPRT)</p> <p>402N Fourth Street Baton Rouge, LA 70802 225.924.7208 754.944.1745</p>	
<p>General Contractor</p> <p>The Lemoine Company</p> <p>15555 Adria Highway Baton Rouge, LA 70817 754.944.9710</p>	
<p>Architect</p> <p>ANTUNOVICH ASSOCIATES</p> <p>Architects • Planners • Interior Design</p> <p>111 Garden View Place New Orleans, LA 70112 504.581.1111</p>	
<p>Landscape Architect</p> <p>McKnight Landscape Architects</p> <p>568 S. Foster Drive, Ste. 101 Baton Rouge, LA 70806 225.924.1264</p>	
<p>Structural Engineer</p> <p>CS Associates, Inc.</p> <p>4132 West 103rd Street Oak Grove, IL 60453 708.421.5106</p>	
<p>M.E.P. & P. Engineers</p> <p>Ingenuity Engineers, Inc.</p> <p>4138 New Road Street, Ste 300 Orlando, FL 32804 407.568.8817</p>	
<p>Civil Engineer</p> <p>Startec</p> <p>500 Main Street Baton Rouge, LA 70801 225.765.7400</p>	
<p>Project Name</p> <p>CPRA BUILDING 10A</p> <p>THE WATER CAMPUS 150 TERRACE ST BATON ROUGE LA 70802</p>	
<p>Drawing Title</p> <p>THIRD FLOOR</p>	
<p>Seal</p>	<p>User</p> <p>09/24/14</p> <p>Drawn By</p> <p>FLD</p> <p>Checked By</p> <p>Checker</p> <p>Project No</p>
<p>A2.03</p>	



- DENOTES FIRE EXTINGUISHERS



DENOTES FIRE ALARM

13	02/21/10	ASB ROOM
11	11/06/10	ASB ROOM
10	10/16/10	ASB ROOM
9	08/09/10	ISSUE FOR CONSTRUCTION
8	04/17/10	PERMIT COMMENT REVISIONS
7	01/22/10	ISSUE FOR PERMIT
6	12/05/10	ISSUE FOR BID
5	10/15/10	ISSUE FOR 75% CONSTRUCTION DOCUMENTS
4	09/24/10	ISSUE FOR DESIGN DEVELOPMENT
3	08/20/10	ISSUE FOR SCHEMATIC DESIGN
Submissions & Revisions		
No. Date Description		
Owner		
Commercial Properties Realty Trust (CPRT)		
492 N. Fourth Street		
Baton Rouge, LA 70802		
225.924.7206		
225.274.1755		
General Contractor		
The Lemoine Company		
15555 Adrine Highway		
Baton Rouge, LA 70817		
714.981.1710		
Architect		
ANTUNOVICH ASSOCIATES		
Architects • Planners • Interior Design		
1101 Louisiana Highway		
Suite 110		
Baton Rouge, LA 70802		
Landscape Architect		
McKnight Landscape Architects		
666 S. Foster Drive, Ste 101		
Baton Rouge, LA 70806		
225.924.1205		
Structural Engineer		
CS Associates, Inc.		
4532 West 103rd Street		
Oak Lawn, IL 60453		
708.492.5308		
M.E.P. & P. Engineers		
Ingenuity Engineers, Inc.		
4778 Main Street, Ste 300		
Cofflands, FL 33506		
407.768.4067		
Civil Engineer		
Stantec		
500 Main Street		
Baton Rouge, LA 70802		
225.765.7400		
Project Name		
CPRA BUILDING		
10A		
THE WATER CAMPUS		
150 TERRACE ST. BATON ROUGE, LA 70807		
Drawing Title		
FOURTH FLOOR		
Scale		
Date		
09/24/10		
Drawn By		
FLD		
Checked By		
Checker		
Project No.		
Drawing No.		
A2.04		