

# Coastal Protection & Restoration Authority

Quarterly Progress Report

October 2016



Committed to our Coast

# Focus On...

## **The Hydrologic Restoration of the Amite River Diversion Canal**

The Amite River Diversion Canal, constructed in the 1950's, is a 10.6-mile long flood control channel conveying Amite River flow to the Blind River.

Soil excavated during construction of the canal was stacked on the adjacent bank, creating continuous dikes on each side of the canal which disrupted the natural hydrology of the adjacent swamp. This impoundment has caused degradation of the swamp and without this project, existing habitat will convert to open water within 50 years.

To reestablish hydrologic connectivity to the Maurepas Swamp and reduce impoundment, CPRA is constructing three channels in the swamp with gaps at the spoil bank. These openings will facilitate natural hydrologic cycles of seasonal flooding, thereby reducing habitat conversion of swamp to open water and improving fish and wildlife habitat. The addition of vegetative plantings will jumpstart restoration by providing a seed source within the highly-degraded portion of the project area. Approximately 1,600 total acres would be benefited.



*Hydrologic Restoration of the Amite River Diversion Canal (ARDC) (PO-0142): The top image shows a view of a partial cut through the ARDC dike. The cleared channel is visible in the background. The bottom image shows a view of the cleared channel prior to opening of the ARDC dike. Note impounded water in the swamp due to the ARDC dike.*

# PROJECTS IN ENGINEERING & DESIGN

Project ID	Project Name	Tier	4Q 2016	1Q 2017	2Q 2017	3Q 2017	Federal Sponsor	Parish	Acres / Miles Benefited
CDBG									
BA-0082	Lafitte Area Levee Repair	1	D	D	D	C	HUD	Jefferson	4 Miles
TE-0078	Cut-Off/Pointe Aux Chene Levee	1	D	D	C	C	HUD	Lafourche	2.1 Miles
CIAP									
AT-0015	Atchafalaya Long Distance Sediment Pipeline	1	D				USFWS	Terrebonne	N/A
CWPPRA Phase I									
BA-0125	Northwest Turtle Bay Marsh Creation	2	D	W	W	W	USFWS	Jefferson	807 Acres
BA-0171	Caminada Headlands Back Barrier Marsh Creation	1	D	W	W	W	EPA	Lafourche	385 Acres
BA-0173	Bayou Grande Cheniere Marsh & Ridge Restoration	1	D	W	W	W	USFWS	Plaquemines	264 Acres
BA-0193	Caminada Headlands Back Barrier Marsh Creation Increment 2	2	D	D	D	D	EPA	Jefferson, Lafourche	444 Acres
BA-0194	East Leeville Marsh Creation and Nourishment	1	D	D	D	D	NOAA	Lafourche	482 Acres
BA-0195	Barataria Bay Rim Marsh Creation and Nourishment	1	D	D	D	D	NRCS	Jefferson, Plaquemines	517 Acres
BS-0024	Terracing & Marsh Creation South of Big Mar	2	D	W	W	W	USFWS	Plaquemines	383 Acres
CS-0049	Cameron-Creole Freshwater Introduction	1	W	W	W	W	NRCS	Cameron	473 Acres
CS-0066	Cameron Meadows Marsh Creation and Terracing	2	D	W	W	W	NMFS	Cameron	265 Acres
CS-0078	No Name Bayou Marsh Creation	1	D	D	D	D	NMFS	Cameron	497 Acres
CS-0079	Oyster Lake Marsh Creation and Nourishment	1	D	D	D	D	NOAA	Cameron	661 Acres
LA-0280	Shoreline Protection, Preservation, and Restoration (SPPR) Panel	1	D	D	D	D	NOAA	Coastwide	N/A
ME-0031	Freshwater Bayou Marsh Creation	1	D	D	D	D	NRCS	Vermilion	279 Acres
ME-0032	South Grand Chenier Marsh Creation - Baker Tract	1	D	D	D	D	NRCS	Cameron	393 Acres
PO-0075	LaBranche East Marsh Creation	2	D	D	D	D	NRCS	Saint Charles	715 Acres
PO-0133	Labranche Central Marsh Creation	2	D	D	D	D	NRCS	Saint Charles	731 Acres
PO-0168	Shell Beach South Marsh Creation	1	D	D	D	D	EPA	Saint Bernard	634 Acres

## Key:

P	Feasibility & Planning	C	Construction
D	Engineering & Design	F	Construction Complete
W	Awaiting Additional Funding for Implementation	O	O&M



Project ID	Project Name	Tier	4Q 2016	1Q 2017	2Q 2017	3Q 2017	Federal Sponsor	Parish	Acres / Miles Benefited
CWPPRA Phase I									
PO-0169	New Orleans Landbridge Shoreline Stabilization and Marsh Creation	1	D	D	D	D	USFWS	Orleans	271 Acres
PO-0173	Fritch Marsh Creation and Terracing	1	D	D	D	D	NOAA	Saint Tammany	366 Acres
TE-0066	Central Terrebonne Freshwater Enhancement	1	D	D	D	D	NRCS	Terrebonne	456 Acres
TE-0083	Terrebonne Bay Marsh Creation-Nourishment	1	D	D	D	D	USFWS	Terrebonne	353 Acres
TE-0112	North Catfish Lake Marsh	2	D	D	D	D	NRCS	Lafourche	666 Acres
TE-0117	Island Road Marsh Creation & Nourishment	1	D	D	D	D	NMFS	Terrebonne	383 Acres
TE-0134	West Fourchon Marsh Creation & Nourishment	1	D	D	D	D	NMFS	Lafourche	304 Acres
CWPPRA Phase II									
BA-0034-2	Hydrologic Restoration and Vegetative Planting in the Des Allemands Swamp	2	D	D	C	C	EPA	Saint James	2,395 Acres
CS-0054	Cameron-Creole Watershed Grand Bayou Marsh Creation	1	D	C	C	C	USFWS	Cameron	534 Acres
ME-0018	Rockefeller Refuge Gulf Shoreline Stabilization	1	D	D	D	C	NMFS	Cameron	198 Acres
ME-0020	South Grand Chenier Marsh Creation	1	D	C	C	C	USFWS	Cameron	414 Acres
TV-0063	Cole's Bayou Marsh Restoration	1	D	D	C	C	NMFS	Vermilion	398 Acres
NFWF									
BA-0153	Mid-Barataria Sediment Diversion	1	D	D	D	D	N/A	Plaquemines	68,000 Acres
BS-0030	Mid-Breton Sediment Diversion	1	W	D	D	D	N/A	Plaquemines	Not Avail.
LA-0276	Sediment Diversion Implementation and Program Management	1	D	D	D	D	N/A	Jefferson, Lafourche, Plaquemines, Saint Bernard	N/A
TE-0118	East Timbalier Island Restoration	1	D	D	D	D	N/A	Lafourche	Not Avail.
RESTORE									
CS-0065	Calcasieu River Salinity Control Measures	1	D	D	D	D	N/A	Cameron	21,600 Acres
PO-0174	Biloxi Marsh Living Shoreline	1	D	D	D	D	N/A	Saint Bernard	Not Avail.

\* **Tier 1:** Projects are a high priority and are either consistent with the 2012 Master Plan or CPRA has agreed to move the project forward.

**Tier 2:** While still a priority, these projects have likely experienced delays or are not as consistent as Tier 1 projects with the 2012 Master Plan.

**Tier 3:** While potentially beneficial, these projects are the least consistent with the 2012 Master Plan and have experienced significant delays or potentially insurmountable issues that will likely affect the project's ability to be constructed or meet its intended goals.

# PROJECTS IN ENGINEERING & DESIGN

Project ID	Project Name	Tier	4Q 2016	1Q 2017	2Q 2017	3Q 2017	Federal Sponsor	Parish	Acres / Miles Benefited
State									
BA-0075-2	Rosethorne Tidal Protection	1	D	D	D	C	N/A	Jefferson	5.3 Miles
BA-0169	Kraemer Bayou Boeuf Levee Lift	1	D	D	C	C	N/A	Lafourche	6 Miles
PO-0029	River Reintroduction into Maurepas Swamp	1	D	D	D	D	N/A	Saint James, Saint John The Baptist	45,126 Acres
PO-0167	South Slidell Ring Levee	1	D	D	D	D	N/A	Saint Tammany	1.1 Miles
PO-0170	Violet Canal North Levee Alignment	1	D	D	C	C	N/A	Orleans, Saint Bernard	Not Avail.
TE-0113	Houma Navigation Canal Lock Complex	1	D	D	D	D	N/A	Terrebonne	Not Avail.
TE-0116	St. Mary Backwater Flooding	1	D	D	D	D	N/A	Saint Mary, Terrebonne	1.7 Miles
TV-0055	Morgan City/ St. Mary Flood Protection	1	D	C	C	F	N/A	Saint Mary	4.5 Miles
TV-0057	Delcambre-Avery Canal (E&D)	1	D	D	D	D	N/A	Iberia	N/A
TV-0067	Bayou Tigre Flood Control Project	1	D	D	D	D	N/A	Vermilion	0.1 Miles
TV-0075	Bayou Tigre Flood Control Complex	1	D	D	D	D	N/A	Iberia, Vermilion	Not Avail.
WRDA									
BA-0191	Spanish Pass Ridge and Marsh Restoration	2	D	C	C	C	USACE	Plaquemines	78 Acres

## Key:

P	Feasibility & Planning	C	Construction
D	Engineering & Design	F	Construction Complete
W	Awaiting Additional Funding for Implementation	O	O&M

## ***Projects to be Advertised for Bid in the Next 6 Months***

- ▶ Kraemer Bayou Boeuf Levee Lift (BA-0169)
- ▶ Spanish Pass Ridge and Marsh Restoration (BA-0191)
- ▶ Cameron-Creole Watershed Grand Bayou Marsh Creation (CS-0054)
- ▶ South Grand Chenier Marsh Creation Project (ME-0020)
- ▶ Cut-Off / Pointe Aux Chene Levee (TE-0078)
- ▶ Morgan City/St. Mary Flood Protection (TV-0055)

# PROJECTS IN CONSTRUCTION

Project ID	Project Name	Tier	4Q 2016	1Q 2017	2Q 2017	3Q 2017	Federal Sponsor	Parish	Acres / Miles Benefited
CDBG									
TE-0063	Falgout Canal Freshwater Enhancement	C	C	C	F		HUD	Terrebonne	1.8 miles
CIAP									
BA-0043-EB	Mississippi River Long Distance Sediment Pipeline	C	F				USFWS	Jefferson, Plaquemines	542 Acres
BA-0161	Mississippi River Water Reintroduction into Bayou Lafourche - BLFWD	C	F				USFWS	Assumption, Lafourche	Not Avail.
MR-0016-SSPM	Mississippi River Delta Strategic Planning - SSPM Expansion	C	F				USFWS	East Baton Rouge	N/A
PO-0148	Living Shoreline	C	F				USFWS	Saint Bernard	163 Acres
CWPPRA Phase II									
BA-0027-C	Barataria Basin Landbridge Shoreline Protection, Phase 3	C	C	F	O	O	NRCS	Jefferson, Lafourche	5,587 Acres
BA-0048	Bayou Dupont Marsh and Ridge Creation	C	F	O	O	O	NMFS	Jefferson	317 Acres
BA-0164	Bayou Dupont Sediment Delivery - Marsh Creation #3 and Terracing	C	C	F	O	O	EPA	Jefferson, Plaquemines	113 Acres
BS-0016	South Lake Lery Shoreline and Marsh Restoration	C	C	C	F	O	USFWS	Plaquemines	652 Acres
CS-0059	Oyster Bayou Marsh Creation and Terracing	C	C	C	C	C	NMFS	Cameron	489 Acres
ME-0021	Grand Lake Shoreline Protection	C	C	C	F	O	NRCS	Cameron	45 Acres
PO-0104	Bayou Bonfouca Marsh Creation	C	C	C	C	F	USFWS	Saint Tammany	424 Acres
TE-0072	Lost Lake Marsh Creation and Hydrologic Restoration	C	C	C	C	C	USFWS	Terrebonne	749 Acres
GNO-HSDRRS									
BA-0066	West Bank & Vicinity	C	C	C	C	C	USACE	Jefferson, Orleans, Plaquemines, Saint Charles	76 Miles
BA-0067	New Orleans to Venice	C	C	C	C	C	USACE	Plaquemines	58 Miles
BA-0109	HSDRRS Mitigation- WBV	C	C	C	C	C	USACE	Jefferson, Lafourche	1,540 Acres
BA-0154	Previously Authorized Mitigation WBV	C	C	C	C	C	USACE	Jefferson, Saint Charles	1,217 Acres
PO-0057	SELA	C	C	C	C	C	USACE	Jefferson, Orleans, Saint Tammany	1,300,000 Acres
PO-0060	Permanent Canal Closures and Pump Stations	C	C	C	C	C	USACE	Jefferson, Orleans	0.3 Miles
PO-0063	Lake Pontchartrain & Vicinity	C	C	F			USACE	Jefferson, Orleans, Saint Bernard, Saint Charles	128 Miles
PO-0121	HSDRRS Mitigation- LPV	C	C	C	C	C	USACE	Orleans, Saint Tammany	1,089 Acres



Project ID	Project Name	Tier	4Q 2016	1Q 2017	2Q 2017	3Q 2017	Federal Sponsor	Parish	Acres / Miles Benefited
NFWF									
BA-0143	Caminada Headland Beach and Dune Restoration INCR2	C	F				N/A	Jefferson, Lafourche	489 Acres
NRDA									
BA-0111	Shell Island West- NRDA	C	C	C	F		N/A	Plaquemines	606 Acres
TE-0100	NRDA Caillou Lake Headlands	C	C	C	C	C	N/A	Terrebonne	933 Acres
State									
BA-0075-1	Jean Lafitte Tidal Protection	C	C	C	C	C	N/A	Jefferson	2.9 Miles
BA-0085	St. Charles West Bank Hurricane Protection Levee	C	C	C	C	C	N/A	Saint Charles	9 Miles
PO-0142	Hydrologic Restoration of the Amite River Diversion Canal	C	F				N/A	Livingston	1,600 Acres
TE-0064	Morganza to the Gulf	C	C	C	C	C	USACE	Lafourche, Terrebonne	18 Miles
TE-0065-SP	Larose to Golden Meadow - Larose Sheetpile	C	F				N/A	Lafourche	0.5 Miles

#### Key:

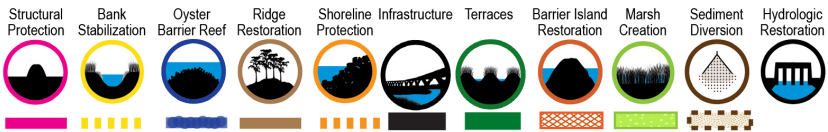
P	Feasibility & Planning	C	Construction
D	Engineering & Design	F	Construction Complete
W	Awaiting Additional Funding for Implementation	O	O&M

Note: Construction begins when a project is advertised.

# PROJECTS IN CONSTRUCTION

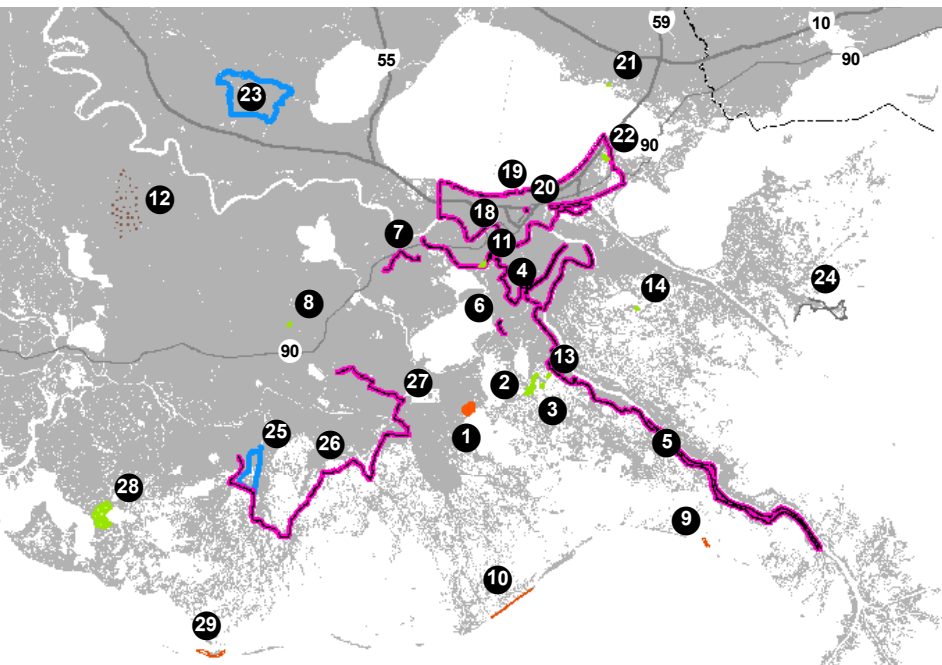


## Project Types Included in Coastal Program:



## Projects in Construction

- 1. Barataria Basin Landbridge Shoreline Protection, Phase 3 (BA-0027-C):** Protection will be provided to a total of 41,000 feet of shoreline in order to preserve the effectiveness of these areas in preventing marsh loss. Areas featured in the project include the west bank of Bayou Perot, the north shore of Little Lake, the east bank of Bayou Perot and each bank of the Harvey Cutoff.
- 2. Long Distance MS River Sediment Pipeline (BA-0043 EB):** The goal of this project is to use material dredged from the Mississippi River and transported via pipeline across the Barataria Basin to create marsh and/or a ridge.
- 3. Bayou Dupont Marsh and Ridge Creation Project (BA-0048):** This marsh and ridge creation project is intended to create approximately 277 acres of marsh, nourish 93 acres of marsh, and create 20 acres of maritime ridge.
- 4. West Bank and Vicinity (BA-0066):** The project provides 100-year protection levels to the project area through levees constructed to 2011 protection levels and T-Walls and other structures to 2057 protection levels.
- 5. New Orleans to Venice (BA-0067):** This project consists of working with 7 levee reaches, comprising 58 miles of major levee enhancement. The project



repairs and re-builds the Empire Flood Gate and Empire Locks and provides repair and fronting protection for several pumping stations.

6. **Jean Lafitte Tidal Protection (BA-0075-1):** This project will provide flood protection improvements by raising 15,840 linear feet of existing earthen levee. The project will also include approximately 7,600 linear feet of concrete capped, steel sheet pile floodwall, and flood gates.
7. **St. Charles West Bank Hurricane Protection Levee (BA-0085):** This project is a system of levees, drainage structures, and pump stations being constructed to provide flood protection to the communities of St. Charles Parish on the West Bank of the Mississippi River.
8. **HSDRRS Mitigation - WBV (BA-0109):** The WBV HSDRRS mitigation project will restore fresh marsh, bottomland hardwood, and swamp habitats in the Barataria Basin, the same hydrologic basin in which the levee-related wetland impacts occurred. The mitigation requirements are commensurate with the impacts caused by construction of the HSDRRS.

*Continued on Page 12*

# PROJECTS IN CONSTRUCTION

*Continued from Page 11*

- 9. Shell Island West - NRDA (BA-0111):** This project will restore approximately 600 acres of barrier island habitat - including beach, dune and back barrier marsh - on the western portion of Shell Island East and will restore the entirety of Shell Island West.
- 10. Caminada Headland Beach and Dune Restoration INCR2 (BA-0143):** This project will restore and protect beach and dune habitat across the Caminada Headland through the direct placement of approximately 5.4 million cubic yards of sandy material from Ship Shoal (an offshore borrow source). A total of 489 acres of beach and dune habitat will be restored.
- 11. Previously Authorized Mitigation WBV (BA-0154):** This project will mitigate for damages done during Pre-Hurricane Katrina levee construction. 1,217 acres of swamp and bottomland hardwood habitats will be acquired for conservation with restoration projects included on each acquired property.
- 12. Mississippi River Water Reintroduction into Bayou Lafourche - BLFWD (BA-0161):** This project will allow for increased flows through the bayou to benefit the Terrebonne and Barataria Basins through reductions in the salinities and/or nourishment of wetlands with the introduction and distribution of sediment and nutrients from the river.
- 13. Bayou Dupont Sediment Delivery - Marsh Creation #3 and Terracing (BA-0164):** This project involves dredging sediment from the Mississippi River for marsh creation by pumping the sediment via pipeline into an area of open water and broken marsh. Additionally, tidal creeks will be created to improve marsh habitat value, and native intertidal marsh vegetation will be planted following construction. Approximately 415 acres of emergent intermediate marsh will be created and nourished.
- 14. South Lake Lery Shoreline and Marsh Restoration (BS-0016):** The marsh creation aspect of the project would extract and pump material from Lake Lery water bottoms into contained marsh creation cells located south of the lake. The shoreline restoration component would excavate material from the bottom of Lake Lery and place it along 35,831 feet of the southern and western lake shorelines.
- 15. Oyster Bayou Marsh Creation and Terracing (CS-0059):** This project will restore and nourish degraded saline marsh and construct earthen terraces to reduce wind/wake erosion. Material dredged from the Gulf of Mexico will be utilized to construct 510 acres of marsh. The dredge material will also be used to nourish another 90 acres of marsh. The construction of tidal creeks and ponds prior to filling the area and gapping of retention levees will support estuarine fisheries' access to achieve a functional marsh.
- 16. Grand Lake Shoreline Protection (ME-0021):** This project will re-establish the dunes and beachhead for 8.7 miles extending from the western Calcasieu River Jetty to the eastern-most breakwater at the Holly Beach/Constance Beach breakwater field. It includes construction of a rock dike to protect the south shoreline of Grand Lake from Catfish Lake through Tebo Point.
- 17. Mississippi River Delta Strategic Planning - SSPM Expansion (MR-0016-SSPM):** This project features a new expanded Small Scale Physical Model (SSPM) capable of modeling smaller flows and with an increased area of coverage in comparison to the previous SSPM. The project will also include the construction of a new facility to house the model as well as facilitate the use of the model for public outreach and educational efforts.

18. **SELA (PO-0057):** Project reduces damages due to rainfall flooding in Orleans, Jefferson, and Saint Tammany parishes through increases in pump station capacity, and improvements in surface and sub-surface drainage features.
19. **Permanent Canal Closures and Pump Stations (PO-0060):** This project includes modifications of the 17th Street, Orleans Avenue, and London Avenue drainage canals and installation of pumps and closure structures at or near the lakefront.
20. **Lake Pontchartrain and Vicinity (PO-0063):** The Lake Pontchartrain and Vicinity project refers to the hurricane protection program around Lake Pontchartrain. This program involves approximately 30 projects in east Jefferson and Saint Charles Parishes.
21. **Bayou Bonfouca Marsh Creation (PO-0104):** Sediment, hydraulically dredged from Lake Pontchartrain will be placed in open water sites to create 458 acres of marsh and nourish approximately 133 acres of marsh.
22. **HSDRRS Mitigation - LPV (PO-0121):** Using material dredged from Lake Pontchartrain, four mitigation projects will be constructed to create intermediate marsh or, brackish marsh or bottomland hardwood habitat at four locations in both Orleans and Saint Tammany Parish.
23. **Hydrologic Restoration of the Amite River Diversion Canal (PO-0142):** This project will include construction of three gaps in the spoil bank to reduce impoundment and conveyance channels to add connectivity with the interior swamp habitat. Approximately 1,600 total acres would be benefited.
24. **Living Shoreline (PO-0148):** This project will directly benefit as much as 215 linear miles of shoreline in St. Bernard Parish, in addition to smaller areas in Plaquemines and Jefferson. The reef would be constructed using different technologies/methods in order to compare the efficiency and efficacy of each method at reducing shoreline erosion.
25. **Falgout Canal Freshwater Enhancement (TE-0063):** This project will construct Segment 2 of Reach E of the Falgout Canal Road Levee, which will be approximately 1.8 miles long. This Segment supports a larger project that will construct 24,000 linear feet of a new flood protection levee.
26. **Morganza to the Gulf (TE-0064):** The project provides protection to Terrebonne and portions of Lafourche Parishes against storm events by developing levees, T-walls, navigation structures, water control structures, and floodgates.
27. **Larose to Golden Meadow - Larose Sheetpile (TE-0065-SP):** This project would construct 2,400 linear feet of floodwall, which would bring this section to the authorized elevation. It will also provide an extra factor of safety and improve the existing line of protection, while limiting the disruption to the adjacent properties and utilities during an approaching hurricane storm surge.
28. **Lost Lake Marsh Creation and Hydrologic Restoration (TE-0072):** This project will restore the structural framework between Lake Pagie and Bayou Decade, while increasing the delivery of fresh water, sediments, and nutrients into marshes north and west of Lost Lake.
29. **NRDA Caillou Lake Headlands (TE-0100):** The project includes restoring the barrier shoreline along the entire length of Whiskey Island through beach and dune fill placement, utilizing an offshore sand source in Ship Shoal. It also entails restoring the marsh platform along the western half of the island.

# OTHER PROJECTS

## Planning

Project ID	Project Name	Tier	4Q 2016	1Q 2017	2Q 2017	3Q 2017	Federal Sponsor	Parish	Acres / Miles Benefitted
GNO-HSDRRS									
BA-0158	New Orleans to Venice Mitigation - Plaquemines Non-Fed	2	P	P	D	D	USACE	Plaquemines	230 Acres
BA-0159	New Orleans to Venice	2	P	P	D	D	USACE	Plaquemines	303 Acres
NFWF									
TE-0110	Increase Atchafalaya Flow to Terrebonne	1	P	P	D	D	N/A	St. Mary, Terrebonne	17,200 Acres
Oil Spill									
BA-0192	Barataria Large-Scale Component E-Planning	1	P	P	P	P	N/A	Jefferson, Plaquemines	8,070 Acres
RESTORE									
BA-0197	West Grand Terre Beach Nourishment and Stabilization	1	P	D	D	D	N/A	Jefferson	Not Avail.
PO-0163	Golden Triangle Marsh Creation	1	P	D	D	D	N/A	Orleans, Saint Bernard	Not Avail.
State									
BA-0170	Breach Management Plan	2	P				N/A	Jefferson, Lafourche, Plaquemines, Terrebonne	N/A
TE-0108	HNC Deepening Section 203 Study	2	P	P	P	P	USACE	Terrebonne	N/A
TV-0054	South Central Coastal Plan	1	P	P	P	P	USACE	Iberia, Saint Martin, Saint Mary	Not Avail.
WRDA									
LA-0020	Southwest Coastal Louisiana Feasibility Study	1	W	W	W	W	USACE	Calcasieu, Cameron, Vermilion	Not Avail.
MR-0016	Mississippi River Hydrodynamic and Delta Management Study	P	P	P	P	P	USACE	Ascension, Assumption, Concordia, East Baton Rouge, East Feliciana, Iberville, Jefferson, Lafourche, Livingston, Orleans, Plaquemines, Pointe Coupee, Saint Bernard, Saint Charles, Saint James, Saint John the Baptist, Saint Tammany, Tangipahoa, Terrebonne, West Baton Rouge, West Feliciana	N/A

### Key:

P	Feasibility & Planning	C	Construction
D	Engineering & Design	F	Construction Complete
W	Awaiting Additional Funding for Implementation	O	O&M

Note: Construction begins when a project is advertised.



# Programs

Project ID	Project Name	Tier	4Q 2016	1Q 2017	2Q 2017	3Q 2017	Federal Sponsor	Parish	Acres / Miles Benefited
CIAP									
LA-0012-3	Performance Evaluation - Freshwater Bayou	2	O				USFWS	Vermilion	N/A
LA-0013	Coastal Forest Conservation Initiative	1	O				USFWS	Coastwide	40,000 Acres

Key:

P

Feasibility & Planning

D

Engineering & Design

W

Awaiting Additional Funding for Implementation

C

Construction

F


Construction Complete

O

O&M

Note: Construction begins when a project is advertised.

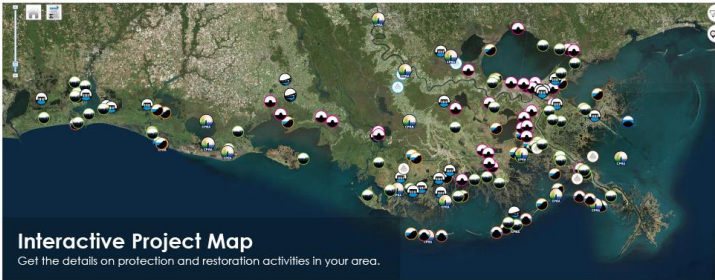
To learn more about how the CPRA is helping to protect and restore Louisiana's coast and communities, visit:



Coastal Protection and Restoration Authority

Sign Up. Stay Informed.

About CPRAWhat's At StakeOur PlanOur WorkNewsroomResourcesCalendar




Interactive Project Map  
Get the details on protection and restoration activities in your area.


What's New

CPRA Solicits Proposals to Conduct Mid-Barataria Sediment Diversion Environmental Impact Statement  
October 22, 2016


RESTORE Council awards first grant for Gulf-wide Restoration to Louisiana for Barrier Island Project  
September 30, 2016



CIMS



RFPs, RSIs - Contracts



Coastal Master Plan

In the News

The \$50 billion plan to save Louisiana's coast gets a rewrite  
The entire land bridge between New Orleans East and Slidell is gone, making Lake Pontchartrain and Lake Borgne a single body of brackish water. To the west, the land bridge between LaPlace and Pontchartroula also has vanished, subsuming Lake Maurepas...  
October 13, 2016

Louisiana Asks Congress to Consider the Investment in

Community Conversations Being Held Across Coastal Louisiana to Inform Development of the 2017 Coastal Master Plan

[www.coastal.la.gov](http://www.coastal.la.gov)

QUARTERLY PROGRESS REPORT - OCTOBER 2016

15

# RECENTLY COMPLETED CONSTRUCTION PROJECTS

## FY 2017

- ▶ PO-0146: LPV Mitigation Project, Manchac WMA Marsh Creation

## FY 2016

- ▶ BA-0042: Lake Hermitage Marsh Creation
- ▶ BA-0068: Grand Liard Marsh and Ridge Restoration
- ▶ BA-0168: Grand Isle - Fifi Island Breakwaters
- ▶ LA-0016: Non-Rock Alternatives to Shoreline Protection Demonstration
- ▶ PO-0043: East LaBranche Shoreline Protection
- ▶ PO-0073: Central Wetlands Demonstration
- ▶ PO-0073-3: Central Wetlands Demonstration Expansion
- ▶ TV-0031: Acadiana Regional Airport Street Improvements - Admiral Doyle Drive
- ▶ TV-0052-2: Franklin Floodgate Sinkable Barge and Pump Station (Phase 2)
- ▶ TV-0076 Surplus Freshwater Bayou Bank Stabilization

## FY2015

- ▶ AT-0005: Morgan City Industrial Road
- ▶ BA-0045: Caminada Headland Beach and Dune Restoration
- ▶ BA-0074: Storm-Proofing of Interior Pumping Stations
- ▶ BA-0084: Walter S. Lemann Memorial Pump Station Renovations
- ▶ BA-0141: NRDA Lake Hermitage Marsh Creation INCR2
- ▶ CS-0028-4-5: Sabine Refuge Marsh Creation, Cycles 4 and 5
- ▶ CS-0033: Cameron Parish Shoreline Restoration
- ▶ ME-0025-SF: Marsh Creation Near Freshwater Bayou
- ▶ PO-0072: Biloxi Marsh
- ▶ PO-0073-1: Central Wetlands - Riverbend
- ▶ PO-0087: Madisonville Bulkhead Project
- ▶ PO-0145: LPV Task Force Guardian Mitigation-Bayou Sauvage
- ▶ TE-0065: Larose to Golden Meadow - Flood Protection
- ▶ TV-0011-B(EB): Freshwater Bayou Bank Stabilization (CIAP)

## Quarterly Progress Report October 2016

### Coastal Protection & Restoration Authority

Project Management Division

P.O. Box 44027

Baton Rouge, LA 70804-4027

Phone: (225) 342-7308

