



Coastal Protection and
Restoration Authority of Louisiana

Cameron Meadows Marsh Creation and Terracing (CS-66)

Julia Wall, E.I.
Engineering Division
May 6, 2014



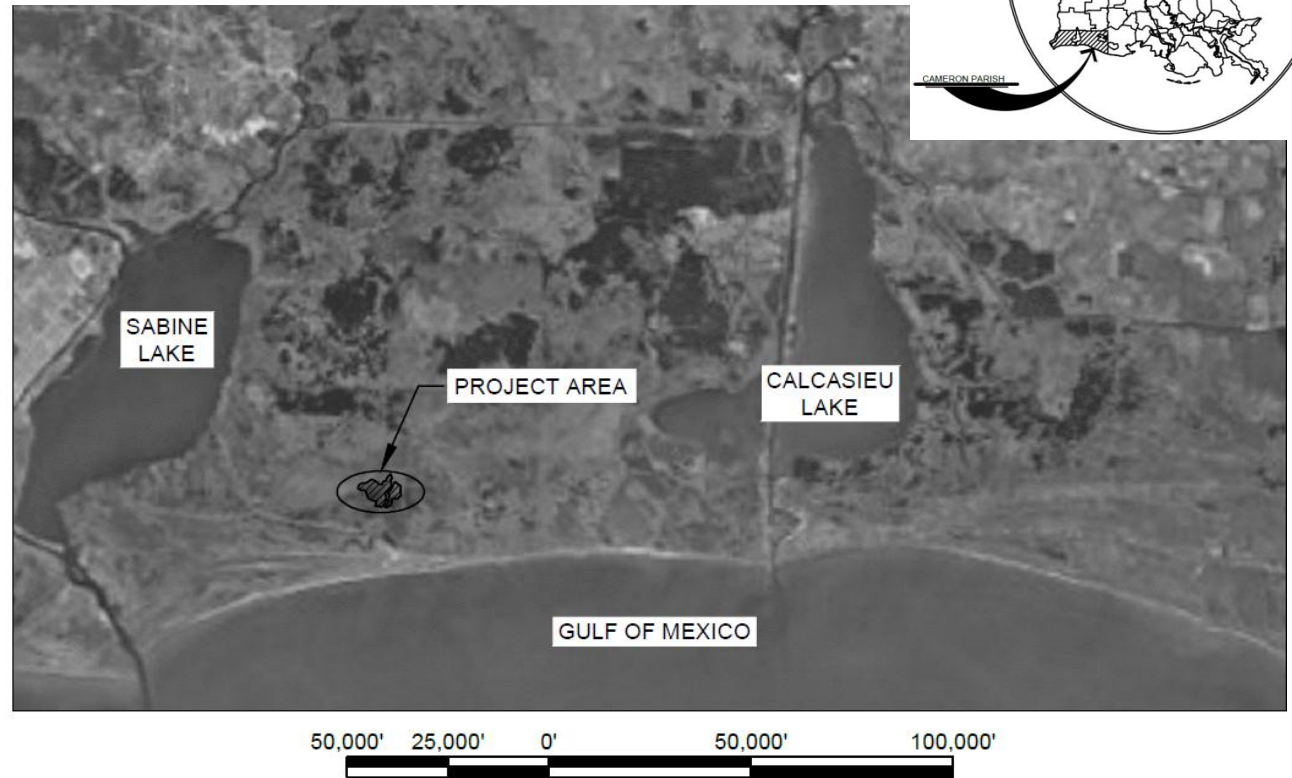
committed to our coast

Coastal Protection and Restoration
Authority of Louisiana

VICINITY MAP

Location:

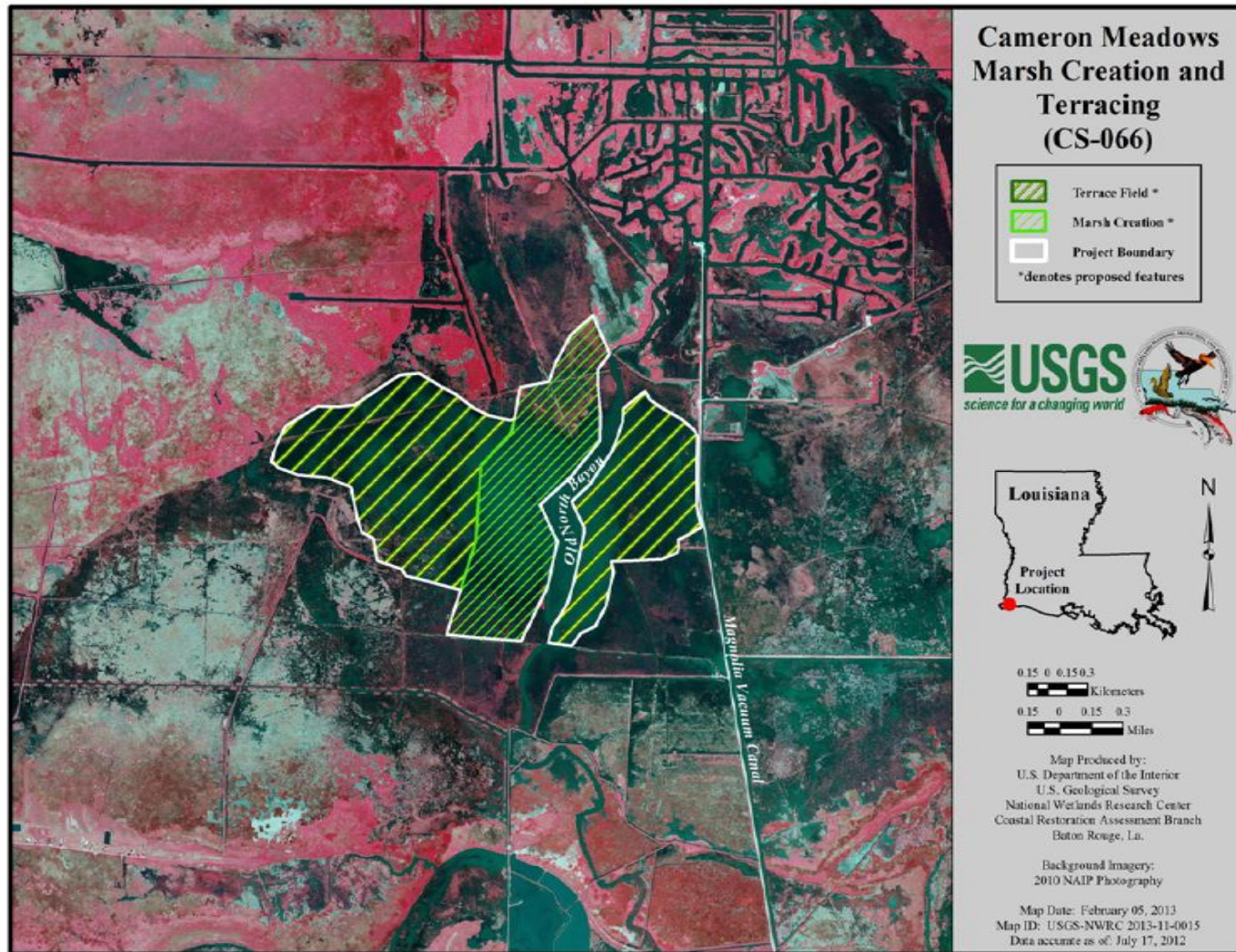
- Calcasieu — Sabine Basin
- Cameron Parish
- 5 mi. NE of Johnson's Bayou
- 5 mi. N of the Gulf of Mexico



PROJECT BACKGROUND

- CWPPRA PPL 22
- Federal Sponsor: NMFS
- Avg. water elevation: 1.5 feet
- Landloss rate: -0.94%/yr. (USGS, 1984-2010)
- Create/restore over 350 acres of coastal marsh habitat
- Create approximately 35,000 LF of earthen terraces
- Re-establish hydrologic connectivity

PROJECT MAP



CAUSES

- Rapid fluid and gas extraction
- Hurricanes
- Saltwater intrusion
- Subsidence
- Hydrologic alterations



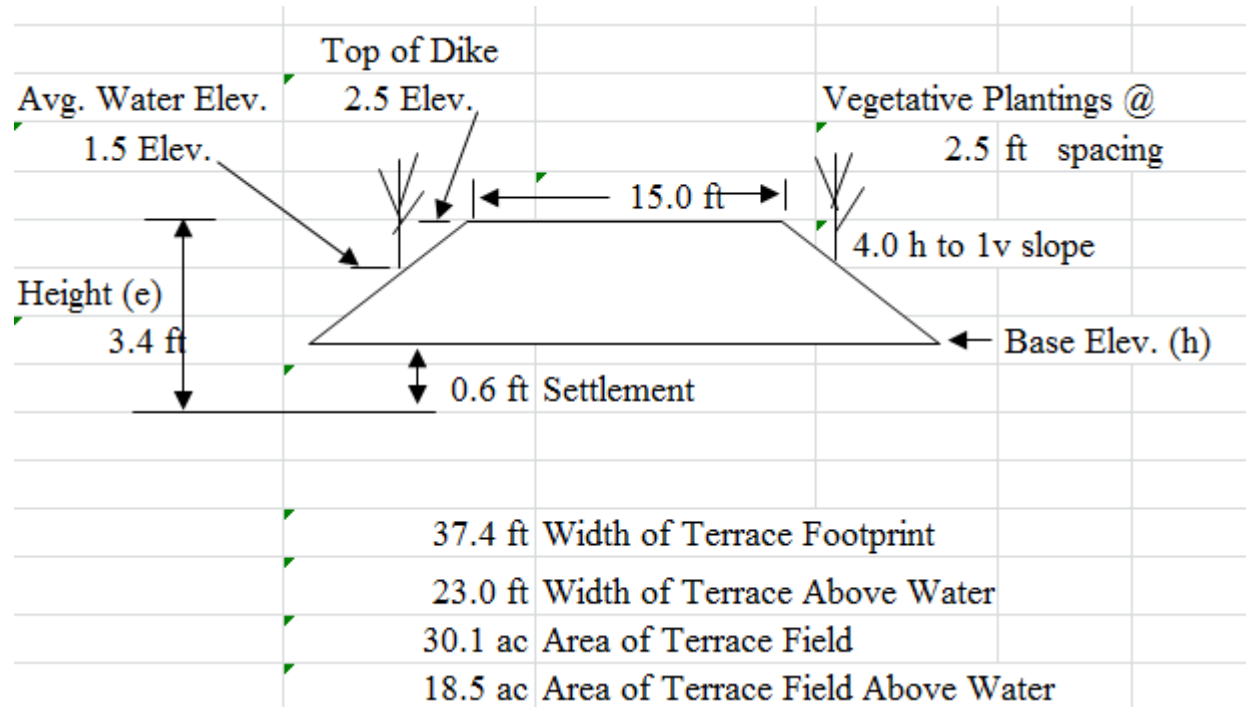
MARSH CREATION

- Restore 352 acres
- Borrow from the Gulf of Mexico
- Pump via pipeline, ~6 mi.
- Target marsh elevation +1.5 ft.
- 20,000 ft. containment dike
- Planted



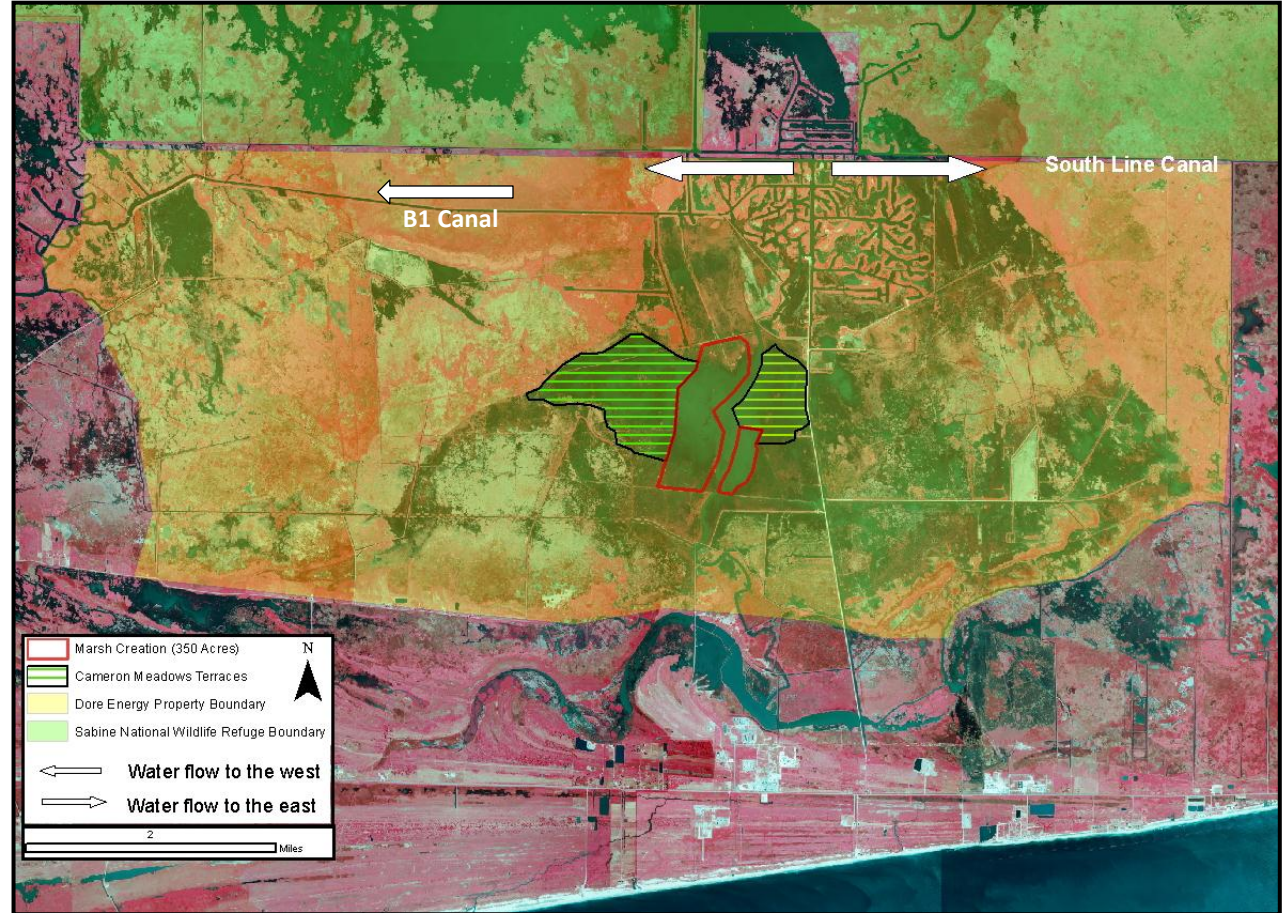
TERRACING

- Construct 35,000 LF of earthen terraces
- +2.5 ft. NAVD 88
- 15 ft. crown width
- Planted



RE-ESTABLISH HYDROLOGIC CONNECTIVITY

- Clean out 30,000 LF of canals
- Drainage canals filled in with debris due to hurricanes



PROJECT FUTURE

- Engineering and Design: 2014-2015
 - Hydrodynamic modeling
 - Topographic, bathymetric, and magnetometer survey
 - Geotechnical investigation
 - Offshore borrow site investigation
- Compete for CWPRRA Phase II Funding:
December 2015

QUESTIONS