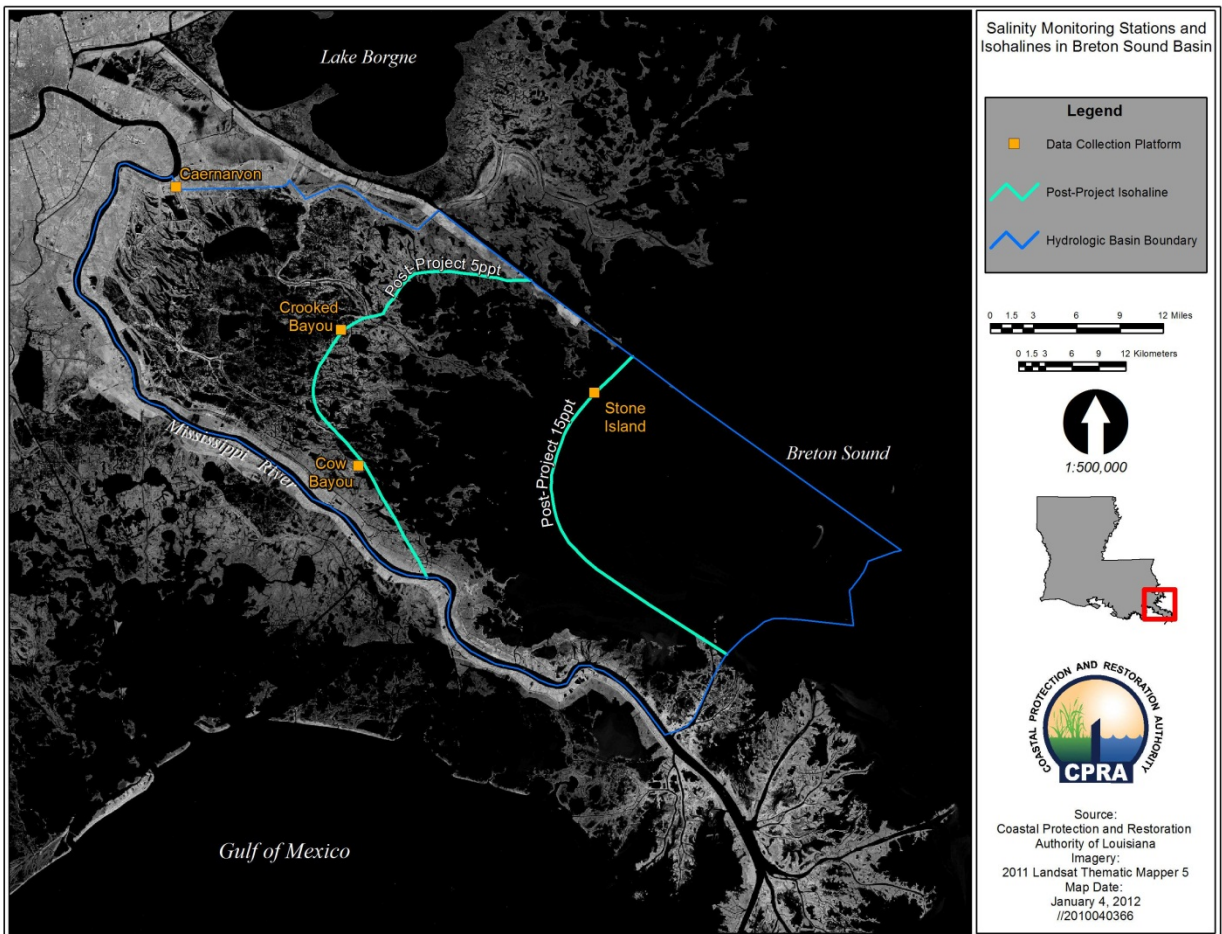
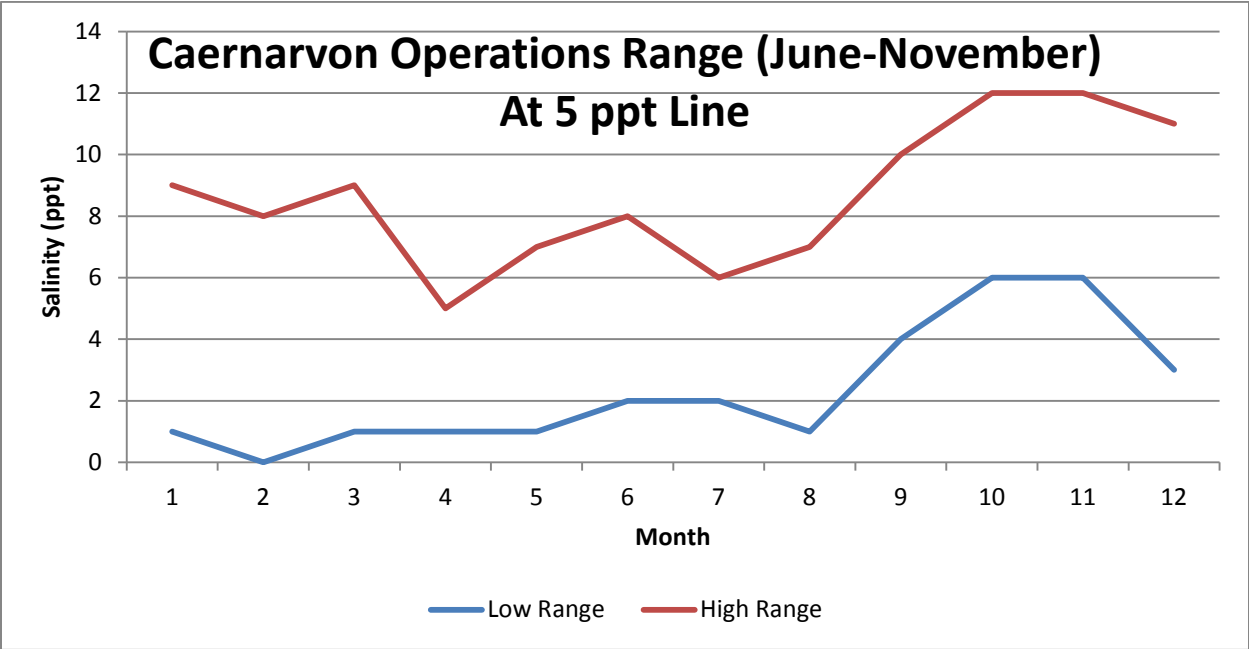
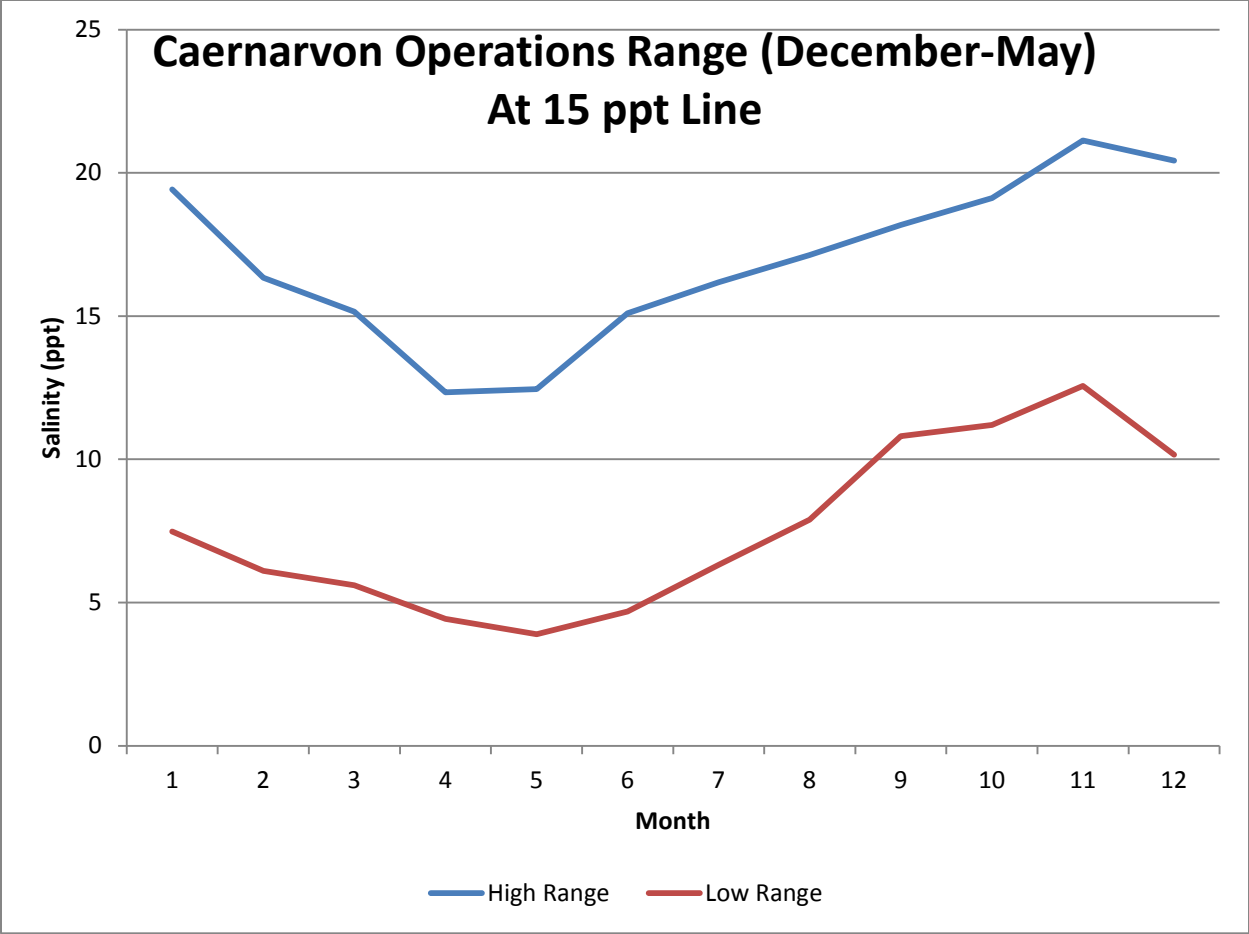


“PROPOSED” CAERNARVON OPERATIONAL PLAN 2014

The goals of the Caernarvon project are to reduce marsh loss, enhance marsh vegetation, and increase wildlife and fisheries productivity. Recent research and analysis indicated greater wetland benefits from increased freshwater and sediment distribution.

From December through May, Caernarvon operations will be based on the monthly salinity range at the 15 ppt line specified by the graph and map below. From June through November, Caernarvon operations will be based on the monthly salinity range at the 5 ppt line specified by the graph and map below.





(PROPOSED) DAVIS POND OPERATIONAL PLAN 2014

The goals of the Davis Pond project are to reduce marsh loss, enhance marsh vegetation, and increase wildlife and fisheries productivity. Recent research and analysis indicated greater wetland benefits from increased freshwater and sediment distribution.

From December through May, Davis Pond operations will be based on the monthly salinity range at the 15 ppt line specified by the graph and map below. From June through November, Davis Pond operations will be based on the monthly salinity range at the 5 ppt line specified by the graph and map below.

