

# Coastal Protection & Restoration Authority

Quarterly Progress Report

October 2013



Committed to our Coast

# Focus On...

## Biloxi Marsh Shoreline Protection

### *Project Summary*

The Biloxi Marsh region of St. Bernard Parish provides a buffer against Gulf of Mexico storm surge pushing into Lake Borgne and Lake Pontchartrain. The Biloxi Marsh project (PO-72) is the latest in a series of projects (along with PO-30 and PO-32) designed to protect the endangered marsh which has a shoreline receding at an average of seven to nine feet per year.

### *Project Goals*

Preserving the marsh will help mitigate flooding of New Orleans and communities surrounding Lake Pontchartrain and Lake Borgne and help preserve up to 40,000 acres of marsh complex, including the 35,644-acre Biloxi Wildlife Management Area.

### *Project Timeline*

Mobilization for construction began in July 2013. The anticipated project completion date is late summer of 2014.



## Project Stats

### *Project Type*

Shoreline Protection

### *Estimated Total Cost*

\$22 million

### *Primary Contractor*

Bertucci Contracting Co.



Project ID	Project Name	Tier	4Q 2013	1Q 2014	2Q 2014	3Q 2014	Federal Sponsor	Parish	Acres Benefited / Miles Improved
<b>Engineering and Design</b>									
<b>CDBG</b>									
BA-82	Lafite Area Levee Repair	1	D	C	C	F	HUD	Jefferson	4 Miles
BA-83	Rosethorne Wetland Assimilation Project	1	D	D	C	C	HUD	Jefferson	334 Acres
TE-78	Cut-Off/Pointe Aux Chene Levee	1	D	C	C	C	HUD	Lafourche	8 Miles
TV-60	Front Ridge Chenier Terracing/Protection	1	D	C	C	C	HUD	Vermilion	40 Acres
<b>CIAP</b>									
AT-0005	Morgan City Industrial Road	2	D	C	C	C	USFWS	Saint Mary	N/A
BA-0161	Mississippi River Water Reintroduction into Bayou Lafourche - BLFWD	1	D	D	D	D	USFWS	Assumption, Lafourche	Not avail.
MR-0016-SSPM	Mississippi River Delta Strategic Planning - SSPM Expansion	1	D	D	D	D	USFWS	East Baton Rouge	N/A
PO-148	Living Shoreline	1	D	D	D	D	USFWS	Saint Bernard	5340 Acres
PO-73-1	Central Wetlands - Riverbend	1	D	C	C	C	USFWS	Saint Bernard	346 Acres
PO-73-2	Central Wetlands - EBSTP to A2	1	D	C	C	C	USFWS	Orleans, Saint Bernard	473 Acres
TE-63	Falgout Canal Freshwater Enhancement	2	D	C	C	C	USFWS	Terrebonne	5000 Acres
TV-31	Acadiana Regional Airport Street Improvements - Admiral Doyle Drive	2	D	C	C	C	USFWS	Iberia	N/A
<b>CWPPRA,Phase I</b>									
BA-34-2	Hydrologic Restoration and Vegetative Planting in the Lac des Allemands Swamp	2	D	D	D	D	EPA	Lafourche, Saint James	5134 Acres
BA-47	West Pointe a la Hache Marsh Creation Project	1	D	D	D	W	NRCS	Plaquemines	203 Acres
BA-125	Northwest Turtle Bay Marsh Creation	2	D	D	D	W	USFWS	Jefferson	760 Acres
BA-164	Bayou Dupont Sediment Delivery - Marsh Creation 3	1	D	D	D	D	EPA	Jefferson, Plaquemines	415 Acres
BS-024	Terracing & Marsh Creation South of Big Mar	2	D	D	D	D	USFWS	Plaquemines	383 Acres
CS-49	Cameron-Creole Freshwater Introduction	1	D	D	D	D	NRCS	Cameron	473 Acres
CS-53	Kelso Bayou Marsh Creation	1	D	D	D	D	NRCS	Cameron	274 Acres
CS-54	Cameron-Creole Watershed Grand Bayou Marsh Creation	1	D	W	W	W	USFWS	Cameron	534 Acres
CS-59	Oyster Bayou Marsh Creation and Terracing	1	D	D	D	D	NMFS	Cameron	600 Acres
CS-66	Cameron Meadows Marsh Creation and Terracing	2	D	D	D	D	NOAA	Cameron	401 Acres
ME-18	Rockefeller Refuge Gulf Shoreline Stabilization	1	D	D	D	D	NOAA	Cameron	198 Acres
ME-31	Freshwater Bayou Marsh Creation (CWPPRA)	1	D	D	D	W	NRCS	Vermilion	401 Acres
PO-75	LaBranche East Marsh Creation	2	D	D	D	D	NRCS	Saint Charles	715 Acres
PO-133	LaBranche Central Marsh Creation	2	D	D	D	D	NRCS	Saint Charles	731 Acres
TE-51	Madison Bay Marsh Creation and Terracing	1	D	W	W	W	NOAA	Terrebonne	1019 Acres
TE-66	Central Terrebonne Freshwater Enhancement	1	D	D	D	D	NRCS	Terrebonne	456 Acres
TE-83	Terrebonne Bay Marsh Creation	1	D	D	D	D	USFWS	Terrebonne	353 Acres
TE-112	North Catfish Lake Marsh Creation	2	D	D	D	D	NRCS	Lafourche	666 Acres
TV-63	Cole's Bayou Marsh Restoration	1	D	D	D	D	NOAA	Vermilion	428 Acres

Project ID	Project Name	Tier	4Q 2013	1Q 2014	2Q 2014	3Q 2014	Federal Sponsor	Parish	Acres Benefited / Miles Improved
<b>CWPPRA,Phase II</b>									
BA-04C	West Pointe a la Hache Outfall Management	3	D	D	D	C	NRCS	Plaquemines	646 Acres
BA-27C	Barataria Basin Landbridge SP- Phase 3-CU7 & 8	2	D	C	C	C	NRCS	Jefferson, Lafourche	5587 Acres
BA-68	Grand Liard Marsh and Ridge Restoration	1	D	C	C	C	NOAA	Plaquemines	502 Acres
CS-0028	Sabine Refuge Marsh Creation Cycles 4 & 5	1	D	D	C	C	USFWS	Cameron	460 Acres
ME-21	Grand Lake Shoreline Protection- Tebo Point	1	D	D	C	C	NRCS	Cameron	45 Acres
PO-104	Bayou Bonfouca Marsh Creation	2	D	D	C	C	USFWS	Saint Tammany	424 Acres
TE-32A	North Lake Boudreaux Basin Freshwater Introduction and Hydrologic Management	1	D	D	D	D	USFWS	Terrebonne	265 Acres
TE-72	Lost Lake Marsh Creation and Hydrologic Restoration	1	D	C	C	C	USFWS	Terrebonne	749 Acres
<b>GNO-HSDRRS</b>									
BA-109	HSDRRS Mitigation- WBV	2	D	D	D	D	USACE	Jefferson, Lafourche	1540 Acres
BA-154	Previously Authorized Mitigation WBV	2	D	D	C	C	USACE	Jefferson, Saint Charles	1217 Acres
BA-156	Plaquemines TFO Mitigation - Braithwaite to Scarsdale - Big Mar	2	D	D	D	F	USACE	Plaquemines	24 Acres
PO-121	HSDRRS Mitigation- LPV	2	D	D	D	D	USACE	Orleans, Saint Tammany	1089 Acres

## Key:

P	Feasibility & Planning	C	Construction
D	Engineering & Design	F	Construction Complete
W	Awaiting Additional Funding for Implementation	O	O&M

**\* Tier 1:** Projects are a high priority and are either consistent with the 2012 Master Plan or CPRA has agreed to move the project forward.

**Tier 2:** While still a priority, these projects have likely experienced delays or are not as consistent as Tier 1 projects with the 2012 Master Plan.

**Tier 3:** While potentially beneficial, these projects are the least consistent with the 2012 Master Plan and have experienced significant delays or potentially insurmountable issues that will likely affect the project's ability to be constructed or meet its intended goals.

Project ID	Project Name	Tier	4Q 2013	1Q 2014	2Q 2014	3Q 2014	Federal Sponsor	Parish	Acres Benefited / Miles Improved
<b>LOSCO</b>									
TE-0109	OPA Mosquito Bay	1	D	C	C	C	N/A	Plaquemines	14 Acres
<b>NRDA</b>									
BA-143	NRDA Caminada Headland Beach and Dune Restoration INCR2	1	D	D	D		N/A	Jefferson, Lafourche	489 Acres
TE-100	NRDA Caillou Lake Headlands	1	D				N/A	Terrebonne	1272 Acres
<b>Oil Spill</b>									
BA-153	Mid-Barataria Sediment Diversion	1	D	D	D	D	N/A	Plaquemines	68000 Acres
<b>State</b>									
BA-75-1	Jean Lafitte Tidal Protection	1	D	C	C	C	N/A	Jefferson	2.9 Miles
BA-75-2	Rosethorne Tidal Protection	1	D				N/A	Jefferson	5.3 Miles
BA-85	St. Charles West Bank Hurricane Protection Levee	1	D	C	C	C	N/A	Saint Charles	9 Miles
BA-091	Bayou LaFourche Salt Water Control Structure	1	D	C	C	F	N/A	Lafourche	0.04 Miles
ME-25 SF	Marsh Creation Near Freshwater Bayou	1	D	C	C	C	N/A	Vermilion	96 Acres
PO-29	River Reintroduction into Maurepas Swamp	1	D	D	D	D	EPA	Saint James, Saint John The Baptist	45126 Acres
PO-74	North Shore Hurricane/Flood Protection and Restoration Plan	1	D				N/A	Saint Tammany, Tangipahoa	0.21 Miles
PO-142	Hydrologic Restoration of the Amite River Diversion Canal	1	D	C	C	F	N/A	Ascension, Livingston	1600 Acres
TE-113	Houma Navigation Canal Lock Complex	1	D	D	D	D	N/A	Terrebonne	Not avail.
TV-55	Morgan City/ St Mary Flood Protection	1	D	D	D	D	N/A	Saint Mary	4.5 Miles
TV-57	Delcambre-Avery Canal (E&D)	1	D	D	D	D	N/A	Iberia	N/A
<b>WRDA</b>									
PO-68	LCA Small Diversion at Convent / Blind River	1	D	D	D	D	USACE	Ascension, Saint James	21369 Acres

## Key:

<b>P</b>	Feasibility & Planning	<b>C</b>	Construction
<b>D</b>	Engineering & Design	<b>F</b>	Construction Complete
<b>W</b>	Awaiting Additional Funding for Implementation	<b>O</b>	O&M

**\* Tier 1:** Projects are a high priority and are either consistent with the 2012 Master Plan or CPRA has agreed to move the project forward.

**Tier 2:** While still a priority, these projects have likely experienced delays or are not as consistent as Tier 1 projects with the 2012 Master Plan.

**Tier 3:** While potentially beneficial, these projects are the least consistent with the 2012 Master Plan and have experienced significant delays or potentially insurmountable issues that will likely affect the project's ability to be constructed or meet its intended goals.

## Projects to be Advertised for Bid in the Next 6 Months

- ▶ Acadiana Regional Airport Street Improvements - Admiral Doyle Drive (TV-31)
- ▶ Barataria Basin Landbridge SP - Phase 3 - CU 7 & 8 (BA-0027-C)
- ▶ Bayou LaFourche Salt Water Control Structure (BA-0091)
- ▶ Central Wetlands - EBSTP to A2 (PO-73-2)
- ▶ Central Wetlands - Riverbend (PO-73-1)
- ▶ Cut-Off / Pointe Aux Chene Levee (TE-78)
- ▶ Falgout Canal Freshwater Enhancement (TE-63)
- ▶ Front Ridge Chenier Terracing/Protection (TV-60)
- ▶ Grand Liard Marsh and Ridge Restoration (BA-68)
- ▶ Hydrologic Restoration of the Amite River Diversion Canal (PO-142)
- ▶ Jean Lafitte Tidal Protection (BA-75-1)
- ▶ Lafitte Area Levee Repair (BA-82)
- ▶ Lost Lake Marsh Creation and Hydrologic Restoration (TE-72)
- ▶ Marsh Creation Near Freshwater Bayou (ME-25 SF)
- ▶ Morgan City Industrial Road (AT-05)
- ▶ OPA Mosquito Bay (TE-0109)
- ▶ Rosethorne Wetland Assimilation Project (BA-83)
- ▶ St. Charles West Bank Hurricane Protection Levee (BA-85)

# PROJECTS IN CONSTRUCTION

Project ID	Project Name	Tier	4Q 2013	1Q 2014	2Q 2014	3Q 2014	Federal Sponsor	Parish	Acres Benefited / Miles Improved
<b>Construction</b>									
<b>BERM</b>									
BA-40	Riverine Sand Mining/Scofield Island Restoration	C	F				NOAA	Plaquemines	606 Acres
BA-110	Shell Island East- BERM	C	F				N/A	Plaquemines	307 Acres
<b>CDBG</b>									
BA-84	Bayou Lafourche Fresh Water District - Walter S. Lemann Memorial Pump Station Renovations	C	C	C	C	C	HUD	Ascension	N/A
PO-87	Madisonville Bulkhead Project	C	F				HUD	Saint Tammany	0.1 Miles
TV-52	Franklin Floodgate Sinkable Barge and Pump Station	C	C	C	C	F	HUD	Saint Mary	0.2 Miles
<b>CIAP</b>									
BA-43 (EB)	Long Distance MS River Sediment Pipeline	C	C	C	C	C	USFWS	Jefferson, Lafourche, Plaquemines	371 Acres
BA-45	Caminada Headland Beach and Dune Restoration	C	C	C	F		USFWS	Lafourche	303 Acres
BA-58	Fringe Marsh Repair	C	F				USFWS	Plaquemines	300 Acres
BA-0162-SPER	Shoreline Protection Emergency Restoration	C	F				USFWS	Plaquemines	16 Acres
PO-73	Central Wetlands Demonstration	C	C	C	C	C	USFWS	Orleans	17 Acres
TV-11B (EB)	Freshwater Bayou Bank Stabilization (CIAP)	C	C	C	C	C	USFWS	Vermilion	223 Acres
<b>CWPPRA.Demo</b>									
LA-16	Non-rock Alternatives to Shoreline Protection Demo	C	C	C	F		NRCS	Iberia, Jefferson, Lafourche	N/A
<b>CWPPRA.Phase II</b>									
BA-42	Lake Hermitage Marsh Creation	C	C	C	F	O	USFWS	Plaquemines	438 Acres
BA-48	Bayou Dupont Marsh and Ridge Creation Project	C	C	C	C	C	NOAA	Jefferson	317 Acres
BS-16	South Lake Lery Shoreline and Marsh Restoration	C	C	C	C	C	USFWS	Plaquemines	652 Acres
TE-43	GIWW Bank Restoration of Critical Areas in Terrebonne	C	C	C	C	C	NRCS	Terrebonne	345 Acres
<b>GNO-HSDRRS</b>									
BA-66	West Bank and Vicinity	C	C	C	C	C	USACE	Jefferson, Orleans, Plaquemines, Saint Charles	71 Miles
BA-67	New Orleans to Venice	C	C	C	C	C	USACE	Plaquemines	58 Miles
BA-74	Storm-Proofing of Interior Pumping Stations	C	C	C	F		USACE	Jefferson, Orleans	N/A
PO-55	Lake Pontchartrain & Vicinity, IHNC Surge Barrier, LPV-IHNC-02	C	C	F			USACE	Orleans, Saint Bernard	2 Miles
PO-57	SELA	C	C	C	C	C	USACE	Jefferson, Orleans	20,000,000 Acres
PO-60	Permanent Canal Closures and Pump Stations	C	C	C	C	C	USACE	Jefferson, Orleans	0.34 Miles
PO-63	Lake Pontchartrain & Vicinity	C	C	C	C	F	USACE	Jefferson, Orleans, Saint Bernard, Saint Charles	128 Miles
PO-145	LPV Task Force Guardian Mitigation- Bayou Sauvage	C	C	C	C	F	USACE	Orleans	191 Acres
PO-146	Previously Authorized Mitigation LPV- Manchac	C	C	C	F		USACE	St. John the Baptist	1329 Acres

Project ID	Project Name	Tier	4Q 2013	1Q 2014	2Q 2014	3Q 2014	Federal Sponsor	Parish	Acres Benefited / Miles Improved
<b>LOSCO</b>									
BA-167	OPA Little Lake	C	C	C	C	C	N/A	Jefferson	Not avail.
<b>NRDA</b>									
BA-141	NRDA Lake Hermitage Marsh Creation INCR2	C	C	C	F		N/A	Plaquemines	101 Acres
<b>State</b>									
CS-33	Cameron Parish Shoreline Restoration	C	C	F			N/A	Cameron	523 Acres
PO-72	Biloxi Marsh	C	C	C	C	F	N/A	Saint Bernard	110 Acres
TE-64	Morganza to the Gulf	C	C	C	C	C	USACE	Lafourche, Terrebonne	11 Miles
TE-65	Larose to Golden Meadow - Flood Protection	C	C	F			N/A	Lafourche	23 Miles
TE-111	Valentine to Larose	C	F				N/A	Lafourche	0.38 Miles

## Key:

P	Feasibility & Planning	C	Construction
D	Engineering & Design	F	Construction Complete
W	Awaiting Additional Funding for Implementation	O	O&M

Note: Construction begins when a project is advertised.





## Projects in Construction

- 1. Shell Island East – Berm (BA-110):** The purpose of this project is to restore the integrity of Shell Island, reduce wave energies within the bay area and reestablish productive habitat to Bastian Bay and the surrounding area.
- 2. Riverine Sand Mining/Scofield Island Restoration (BA-40):** The project transports sediments from the Mississippi River to Scofield Island to restore the island's dune and marsh habitats.
- 3. Bayou Lafourche Fresh Water District - Walter S. Lemann Memorial Pump Station Renovations (BA-84):** This project will replace two of the existing pumps and motors at the Walter S. Lemann Pump Station and install an emergency generator to operate the pump station during power outages.
- 4. Madisonville Bulkhead Project (PO-87):** This project will construct improvements to the existing bulkhead along the shore of Lake Pontchartrain and the Tchefuncte River at the Madisonville Marina.
- 5. Franklin Floodgate Sinkable Barge and Pump Station (TV-52):** This project will construct a sinkable barge structure on Franklin Canal to prevent storm surge from inundating the town of Franklin.
- 6. Shoreline Protection Emergency Restoration (BA-162 SPER):** This project will plant vegetation along approximately 1.4 miles of shoreline around Bay Jimmy in Plaquemines Parish to benefit an estimated 16.4 acres of shoreline highly impacted by the Deep Water Horizon oil spill.
- 7. Long Distance MS River Sediment Pipeline (BA-43 EB):** The goal of this project is to use material dredged from the Mississippi River and transported via a pipeline across the Barataria Basin to create marsh and/or a ridge.
- 8. Caminada Headland Beach and Dune Restoration (BA-45):** The project will restore and protect beach and dune habitat across the Caminada Headland by the direct placement of sediment from offshore borrow areas.
- 9. Fringe Marsh Repair (BA-58):** By using dredge materials to reestablish shoreline, this program reestablishes critical areas of fragile marsh and minimizes the continuous fragmentation of the State's coastal wetlands.
- 10. Central Wetlands Demonstration (PO-73):** This water assimilation demonstration project will be completed in conjunction with the Sewerage and Water Board of New Orleans.

Continued on Page 12

Continued from Page 11

11. **Freshwater Bayou Bank Stabilization (TV-11B [EB]):** Located in Vermillion Parish, this project consists of approximately seven miles of rock revetment shoreline protection along four critical areas of the Freshwater Bayou navigation channel.
12. **Non-Rock Alternatives to Shoreline Protection Demo (LA-16):** Project goals are to demonstrate different alternatives to rock shoreline protection methods by testing several different products along highly erosive shorelines in areas that are not conducive to construction with rock.
13. **Lake Hermitage Marsh Creation (BA-42):** The project creates wetlands and reduces tidal exchange in marshes surrounding Lake Hermitage by using material dredged from the Mississippi River.
14. **Bayou Dupont Marsh and Ridge Creation Project (BA-48):** This marsh and ridge creation project is intended to nourish approximately 118 acres of marsh and create 15 acres of maritime ridge by long distance pumping of Mississippi River sediment.
15. **GIWW Bank Restoration of Critical Areas in Terrebonne (TE-43):** The project objective is to restore critical lengths of deteriorated channel banks and stabilize/armor selected critical lengths of deteriorated channel banks with hard shoreline stabilization material.
16. **West Bank and Vicinity (BA-66):** The project provides 100-year protection levels to the project area through levees constructed to 2011 protection levels and T-Walls and other structures to 2057 protection levels.
17. **New Orleans to Venice (BA-67):** The New Orleans to Venice project consists of working with 7 levee reaches, comprising 58 miles of major levee enhancement. The project repairs and re-builds the Empire Flood Gate and Empire Locks and provides repair and fronting protection for several pumping stations.
18. **Storm-Proofing of Interior Pumping Stations (BA-74):** Orleans and Jefferson Parishes will receive a variety of improvements to the parishes' interior pump stations under the Hurricane and Storm Damage Risk Reduction System (HSDRRS).
19. **LPV Task Force Guardian Mitigation – Bayou Sauvage (PO-145):** This project intends to mitigate approximately 147 acres due to emergency levee work that utilized 2 borrow pits of about 57 acres. It provides for the elimination of non-native trees and the replanting of up to 89,000 trees and shrubs of native species.
20. **Previously Authorized Mitigation LPV – Manchac (PO-146):** The project provides for containment dikes with rock and fill areas with dredge material. This project is intended to create marsh and reduce erosion.
21. **Lake Pontchartrain & Vicinity, IHNC Surge Barrier, LPV-IHNC-02 (PO-55):** This project constructed a hurricane surge barrier across the tip of Lake Borgne connecting the MRGO levees south of Bayou Bienvenue with the GIWW levees East of Michoud Canal with floodgates at Bayou Bienvenue and GIWW.
22. **SELA – Overall (PO-57):** The project reduces damage due to rainfall flooding in Orleans and Jefferson Parishes by increasing pump station capacity and improving sub-surface drainage features.
23. **Lake Pontchartrain and Vicinity (PO-63):** The Lake Pontchartrain and Vicinity project refers to the hurricane protection program around Lake Pontchartrain. This program involves approximately 30 projects in east Jefferson and Saint Charles Parishes.
24. **NRDA Lake Hermitage Marsh Creation INCR2 (BA-141):** The project will create 104 acres of marsh.
25. **Cameron Parish Shoreline Restoration (CS-33):** This project re-establishes the dunes and beachhead for 8.7 miles, from the western Calcasieu River Jetty to the eastern-most breakwater at the Holly Beach-Constance Beach breakwater field.
26. **Biloxi Marsh (PO-72):** This project provides shoreline protection for a portion of the southeastern shoreline in Lake Borgne along Biloxi Marsh in Saint Bernard Parish.
27. **Morganza to the Gulf (TE-64):** The project provides protection to Terrebonne and portions of Lafourche Parishes against storm events by developing levees, T-walls, navigation structures, water control structures, and floodgates.
28. **Larose to Golden Meadow - Flood Protection (TE-65):** Through this project, levee improvements and modifications are being completed in Lafourche Parish to inhibit flooding.
29. **Valentine to Larose (TE-111):** To provide flood protection improvements to the current flood protection system along approximately 2,000 linear feet of levee along Bayou Lafourche, from the town of Valentine to the town of Larose.
30. **Permanent Canal Closures and Pump Stations (PO-60):** In June 2006, Congress passed Public Law 109-234 giving the Corps authorization and appropriations of approximately \$800 million to design and construct a permanent protection system for the outfall canals. Specific aspects of the project include: modification of the 17th Street, Orleans Avenue, and London Avenue drainage canals and installation of pumps and closure structures at or near the lakefront.
31. **South Lake Lery Shoreline and Marsh Restoration (BS-16):** This project involves dredging sediment to create 396 acres of marsh and to restore approximately 32,000 feet of the southern Lake Lery shoreline.
32. **OPA Little Lake (BA-167):** The OPA Little Lake Project is a mitigation project through LOSCO. This project will be implemented with the Mississippi River Long Distance Sediment Project (BA-43).

## Planning

Project ID	Project Name	Tier	4Q 2013	1Q 2014	2Q 2014	3Q 2014	Federal Sponsor	Parish	Acres Benefited / Miles Improved
<b>Planning</b>									
<b>CDBG</b>									
PO-151	St Tammany Parish Watershed Management Study	2	P	P	P	P	HUD	Saint Tammany	N/A
<b>GNO-HSDRRS</b>									
BA-158	New Orleans to Venice Mitigation - Plaquemines Non-Fed	2	P	D	D	D	USACE	Plaquemines	230 Acres
BA-159	New Orleans to Venice Mitigation - Fed	2	P	D	D	D	USACE	Plaquemines	303 Acres
PO-62	West Shore-Lake Pontchartrain, Louisiana Hurricane Protection Project Feasibility Study	1	P	P			USACE	Ascension, Saint Charles, Saint James, Saint John the Baptist	27 Miles
<b>Oil Spill</b>									
BA-163	Lower Barataria Diversion	1	P	P	P	P	N/A	Jefferson, Plaquemines	12000 Acres
BS-23	Lower Breton Diversion	1	P	P	P	P	N/A	Plaquemines	13100 Acres
CS-65	Calcasieu River Salinity Control Measures	1	P	P	P	P	N/A	Cameron	21600 Acres
PO-144	Mississippi River Sediment Delivery System East	1	P	P			N/A	Orleans, Saint Bernard	Not avail.
TE-110	Increase Atchafalaya Flow to Terrebonne	1	P	P	P	P	N/A	Terrebonne	17200 Acres
<b>State</b>									
TV-54	South Central Coastal Plan	-	P	P	P	P	USACE	Iberia, Saint Martin, Saint Mary	N/A
<b>WRDA</b>									
LA-20	Southwest Coastal Louisiana Feasibility Study	-	P	P	P	P	USACE	Vermilion, Calcasieu, Cameron	N/A
MR-16	LCA Mississippi River Hydrodynamic and Delta Management Study	1	P	P	P	P	USFWS	East Baton Rouge	N/A

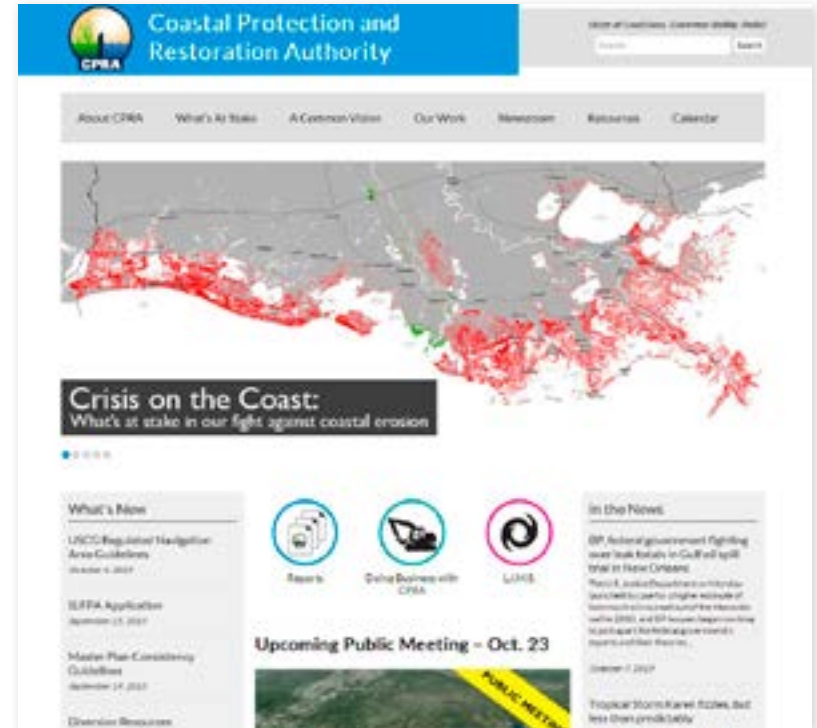
## Programs

Project ID	Project Name	Tier	4Q 2013	1Q 2014	2Q 2014	3Q 2014	Federal Sponsor	Parish	Acres Benefited / Miles Improved
<b>Programs</b>									
<b>CIAP</b>									
LA-12	Performance Evaluation	2	O	O	O	O	USFWS	Cameron, Iberia, Jefferson, Lafourche, Plaquemines, St. Tammany, Terrebonne, Vermilion	N/A
LA-13	Coastal Forest Conservation Initiative	1	O	O	O	O	USFWS	Coastwide	40000 Acres
<b>State</b>									
LA-211	MAS1 - Management	2	O	O	O	O	FEMA	Coastwide	N/A
PO-129	MAS2 - Outreach	2	O	O	O	O	FEMA	Jefferson, Orleans, Plaquemines, Saint Bernard, Saint Charles	N/A

### Key:

P	Feasibility & Planning	C	Construction
D	Engineering & Design	F	Construction Complete
W	Awaiting Additional Funding for Implementation	O	O&M

To learn more about how the CPRA is helping to protect and restore Louisiana's coast and communities, visit:



[www.coastal.la.gov](http://www.coastal.la.gov)

This first public document printing was published at a cost of \$581.31 for 300 copies. The document was published by the Coastal Protection and Restoration Authority of Louisiana. This material was printed in accordance with standards of printing for State Agencies established in R.S. 43:31. Printing of this material was purchased in accordance with the provisions of Title 43 of the Louisiana Revised Statutes.



# RECENTLY COMPLETED CONSTRUCTION PROJECTS

## 2013

- ▶ BA-38: Pelican Island and Pass La Mer to Chaland Pass Restoration
- ▶ PO-36 (EB): Orleans Land Bridge SP & Marsh Creation
- ▶ PO-64: Lake Pontchartrain & Vicinity, Seabrook LPV-IHNC-01
- ▶ TE-48: Raccoon Island Shoreline Protection/Marsh Creation Project
- ▶ TE-52: West Belle Pass Barrier Headland Restoration
- ▶ TV-28: Port of Iberia Bridge Replacement - Port Road over Commercial Canal
- ▶ TV-30: Port of Iberia Bridge Replacement - David Dubois Road over Commercial Canal

## 2012

- ▶ BA-20 CU-4: Jonathan Davis Wetland Protection (Jefferson)
- ▶ BA-38: Pelican Island and Pass La Mer to Chaland Pass Restoration (Plaquemines)
- ▶ BA-41: South Shore of the Pen Shoreline Protection and Marsh Creation (Jefferson)
- ▶ LA-08: Bioengineered Oyster Reef (Cameron)
- ▶ LA-12.1: CIAP Performance Evaluation—Rockefeller Refuge Performance Monitoring (Cameron, Vermilion)
- ▶ PO-64: Lake Pontchartrain & Vicinity, Seabrook LPV-IHNC-01 (Orleans)
- ▶ TE-52: West Belle Pass Barrier Headland Restoration (Lafourche)

## 2011

- ▶ BA-25: Bayou Lafourche Freshwater Introduction (Ascension, Assumption)
- ▶ CS-04a: Cameron-Creole Levee Maintenance (Cameron)
- ▶ PO-61: Saint Bernard Parish 40 Arpent Levee Repairs (Saint Bernard)
- ▶ TE-34: Penchant Basin Natural Resources Plan, Increment 1 (Terrebonne)
- ▶ TE-39 CU-1: South Lake Decade Freshwater Introduction (Terrebonne)
- ▶ TE-53: Enhancement of Barrier Island Vegetation (Terrebonne)
- ▶ TE-82: Lost Lake Vegetation Project (Terrebonne)
- ▶ TV-21: East Marsh Island Marsh Creation (Iberia)
- ▶ (N/A): Emergency Barrier Berms (Saint Bernard, Plaquemines)

## 2010

- ▶ BA-30: East Grand Terre (Jefferson)
- ▶ BA-36: Dedicated Dredging on the Barataria Land Bridge (Jefferson)
- ▶ BA-39: Mississippi River Sediment Delivery System- Bayou Dupont (Jefferson)
- ▶ BA-55: LA-1 Improvement- Fourchon to Leeville Bridge (CIAP) (Lafourche)
- ▶ CS-28-2: Sabine Refuge Marsh Creation, Cycle 2 (Cameron)
- ▶ CS-29: Black Bayou Culverts Hydrologic Restoration (Cameron)

## Quarterly Progress Report October 2013

**Coastal Protection & Restoration Authority**  
Project Management Division  
P.O. Box 44027  
Baton Rouge, LA 70804-4027

Phone: (225) 342-7308

